

Community Based Care: Hardee, Highlands & Polk Counties

Circuit 10 – Central Region

CBC Performance and Quality Improvement Meeting  
Scheduled for Wednesday, August 27<sup>th</sup> , 2014 at 10 a.m.

Data for Week Ended  
Sunday, August 24th, 2014

Conference Call: 866-946-1739  
Participant Number: 7936917#



## Senate Bill 1666 Monthly Reporting Requirements for CBC Lead Agencies:

Reporting Requirement	Location in this Document
Average Caseload of Case Managers	Page 22
Turnover Rate for Case Managers and Case Manager Supervisors for Previous 12 Months	Page 22
Percentage of Required Home Visits Completed	Page 6
Performance on Outcome Measures for Previous 12 Months	Page 5

Heartland for Children  
Fiscal Year Performance Contract Measures at a Glance

FS Measure – Statewide Performance Indicators

CM – Contract Measure - Locally negotiated Contract Measure for Case Management Organizations

Measure / Indicator	Previous Year End HFC Performance										Current Fiscal Year to Date Performance			
	FY 04-05	FY 05-06	FY 06-07	FY 07-08	FY 08-09	FY 09-10	FY 10-11	FY 11-12	FY 12-13	FY 13-14	Reporting Frequency	13-14 Target	Most Recent Report Date	Current HFC Performance
FS 106a – Percentage of children served in out-of-home care who are not maltreated by their out-of-home caregiver	N/A	N/A	N/A	N/A	N/A	99.51%	99.69%	N/A	N/A	99.93% as of 3/31/14	Qtrly	99.68%	03/31/14	99.93%
FS 773 - Percent of children under supervision who are required to be seen every 30 days who are seen every 30 days.	N/A	N/A	N/A	N/A	N/A	N/A	N/A	N/A	N/A	99.63%	Monthly	99.5%	06/30/14	99.63%
FS 108 – Number of missing children per 1000 in In-home and Out of Home Care(Monthly Measure)	N/A	9.35	8.37	9.63	5.76	7.27	8.29	9.19	8.34	6.53 as of 4/30/14	Monthly	10	4/30/814	6.53
FS 301 – Percent of children reunified within 12 months of the latest removal	68.1%	62.6%	73.5%	64.2%	65.5%	61.6%	72.5%	63.1%	66.3%	57.0%	YTD Reported Quarterly	75.2%	06/30/14	57.0%
FS 302 – Percent of children removed within 12 months of a prior reunification	N/A	13.94%*	15.51%*	12.65%*	12.87%*	10.42%	9.8%	11.2%	12.3%	11.5%	YTD Reported Quarterly	9.9%	06/30/14	11.5%
FS 303 – Percent of adoptions finalized within 24 months of removal	16.4%	17.4%	22.2%	34.8%	44.1%	50.7%	45.3%	45.5%	52.4%	49.6%	YTD Reported Quarterly	36.6%	06/30/14	49.6%
FS 306 - The percentage of children in out-of-home care at least 8 days but less than 12 months who had two or fewer placement settings.	N/A	80.9%	80.2%	79.8%	83.6%	84.2%	84.2%	84.4%	84.3%	90.0%	YTD Reported Quarterly	86.0%	06/30/14	90.0%
FS 388 - Number of children in out-of-home care more than 12 months	748	764	743	573	449	382	445	353	411	385	Monthly	497	06/30/14	385
FS 671 - Percent of children in out-of-home care 24 months or longer on July 1 who achieved permanency prior to their 18th birthday and by June 30.	N/A	N/A	N/A	N/A	N/A	37.50%	39.58%	38.29%	45.80%	44.6%	YTD Reported Quarterly	29.1%	06/30/14	44.6%

Note: FS 106a target changed from 99% to 99.68%.

FS 302 target was 9% for years prior to FY 09-10, and 13.6% for FY 09-10.

Legend
Meets or Exceeds the Measure.
Within 10 % of Meeting the Measure.
More than 10 % Variance from Target.
Recently Updated Measure

Heartland for Children  
Performance at a Glance by Case Management Organization

Outcome S1 – Children are first and foremost protected from abuse and neglect
Outcome S2 – Children are safely maintained in their homes whenever possible and appropriate
Outcome P1 – Children have permanency and stability in their living situations
Outcome P2 – The continuity of family relationships and connections is preserved for children
Well Being 1 – Families have enhanced capacity to provide for their children’s needs
Well Being 2 – Children receive appropriate services to meet their educational needs
Well Being 3 – Children receive adequate services to meet their physical and mental health needs

Case Management Organization Performance Fiscal Year to Date (FY 13-14)									
					Case Management Organization				
Measure / Indicator	Outcome(s) Addressed	Reporting Frequency	Target	Most Recent Report Date	CHS	DEV	GCJFCS	OHU	
FS 301 – Percent of children reunified within 12 months of the latest removal	P1; P2 WB1; WB2	13-14 YTD	75.2%	06/30/14	54.2%	50.9%	61.2%	62.0%	
FS 302 – Percent of children removed within 12 months of a prior reunification	S1	13-14 YTD	9.9%	06/30/14	8.6%	7.4%	16.9%	18.2%	
FS 303 – Percent of adoptions finalized within 24 months of removal	P1	13-14 YTD	36.6%	06/30/14	56.1%	37.9%	50.0%	51.3%	
FS 306 - Percent of children with no more than 2 placements within 12 months of removal	P1	13-14 YTD	86.0%	06/30/14	86.3%	91.6%	91.8%	88.6%	
FS 671 - Percent of children in out-of-home care 24 months or longer on July 1 who achieved permanency prior to their 18th birthday and by June 30.	P1	13-14 YTD	29.1%	06/30/14	31.0%	54.8%	53.5%	55.6%	

Case Management Organization Performance for Last Reporting Period									
					Case Management Organization				
Measure / Indicator	Outcome(s) Addressed	Reporting Frequency	Target	Most Recent Report Date	CHS	DEV	GCJFCS	OHU	
FS 773 - Percent of children under supervision who are required to be seen every 30 days who are seen every 30 days.	S2; WB1; WB2	Month	100.0%	05/31/14	99.70%	100.00%	99.50%	100.00%	
FS 301 – Percent of children reunified within 12 months of the latest removal	P1; P2 WB1; WB2	Qtr	75.2%	06/30/14	58.4%	55.3%	60.4%	60.0%	
FS 302 – Percent of children removed within 12 months of a prior reunification	S1	Qtr	9.9%	06/30/14	5.9%	3.6%	21.2%	5.0%	
FS 303 – Percent of adoptions finalized within 24 months of removal	P1	Qtr	36.6%	06/30/14	71.4%	46.7%	44.4%	55.0%	
FS 306 - Percent of children with no more than 2 placements within 12 months of removal	P1	Qtr	86.0%	06/30/14	87.0%	92.3%	92.4%	90.5%	
FS 388 - Number of children in out-of-home care more than 12 months	S2, P1	Month	NA	06/30/14	136	96	121	32	
Percent of Children in OHC placed in a relative or non-relative placement at month end	S2, P1	Month	65.0%	06/30/14	46.3%	52.0%	51.9%	74.0%	
Required Mother Contacts: Children in OHC with a Goal of Reunification	P1; P2	Month	70.0%	06/30/14	69.8%	72.6%	74.7%	73.0%	
Required Father Contacts: Children in OHC with a Goal of Reunification	P1; P2	Month	50.0%	06/30/14	51.6%	55.4%	51.7%	44.4%	
Complete a monthly K12 rpt card for all children in OHC	WB1; WB2	Month	100.0%	05/31/14	100.00%	100.00%	100.00%	100.00%	
Children in Out of home care with updated healthcare information in FSN	WB1; WB2	Month	90.0%	06/30/14	94.3%	93.7%	96.3%	94.6%	

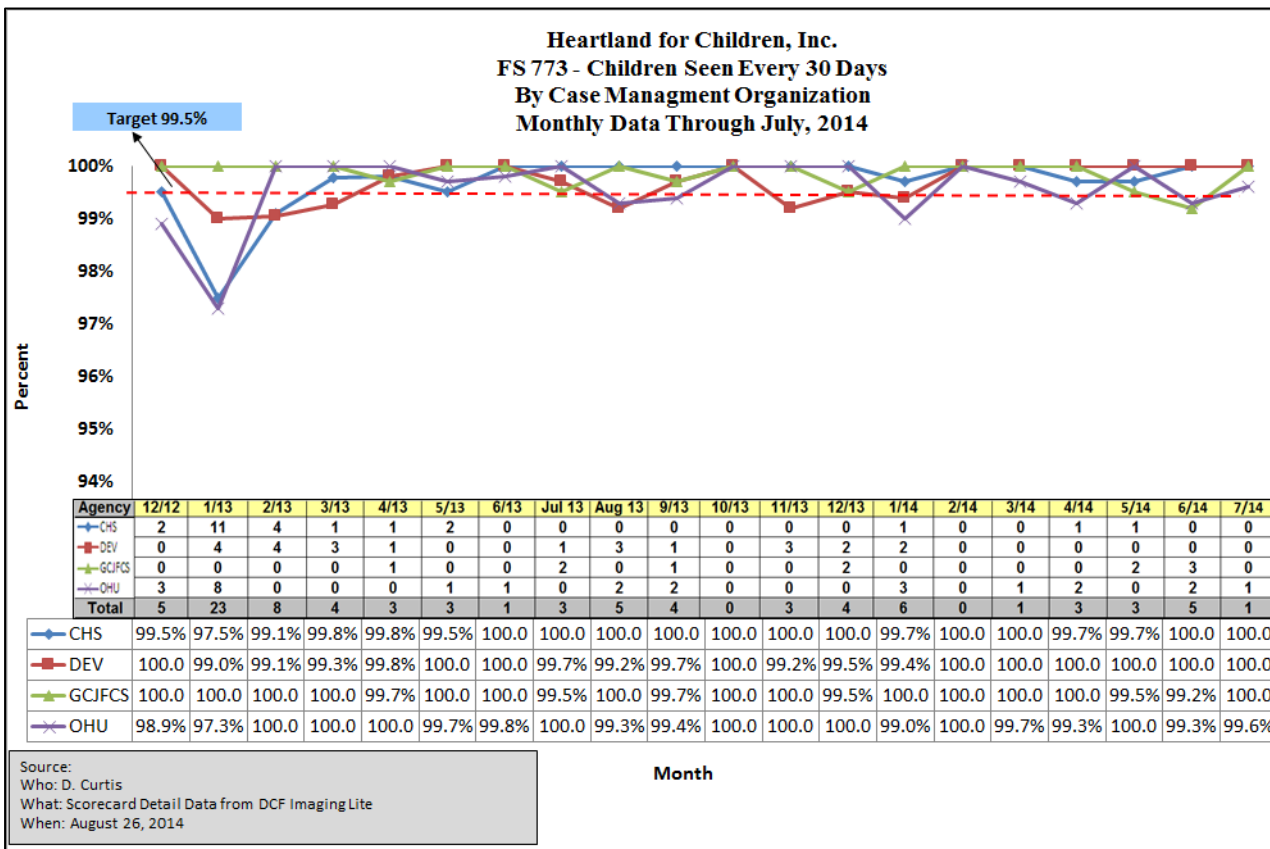
Legend
Meets or Exceeds the Measure.
Within 10 % of Meeting the Measure.
More than 10 % Variance from Target.
Recently Updated Measure



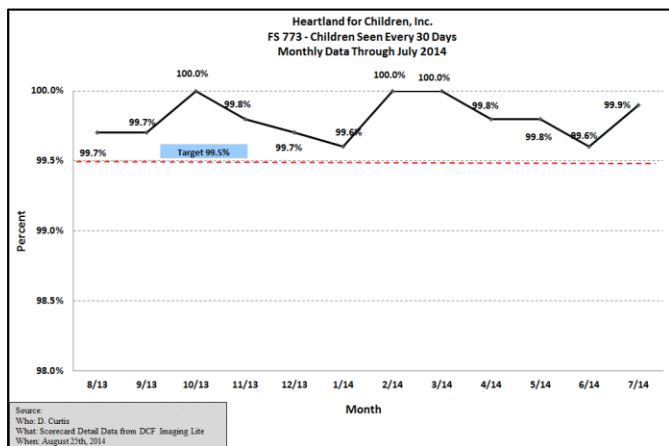
# Community-Based Care Lead Agency Scorecard Performance Through July 2014 Scorecard for Fiscal Year 2014-2015

	Safety			Permanency			Well-Being	
	2. No Verified Maltreatment During In-Home Services	3. No Verified Maltreatment within 6 Months Termination of In-Home & Out-of-Home Services	4. Children in Care 8 Days-12 Months with No More than Two Placements	5. Children Achieving Permanency within 12 Months of Entering Care	6. Children Achieving Permanency after 12 or More Months in Care	7. Children Not Re-entering Out-of-Home Care within 12 Months of Achieving Permanency	8. Children in Lic. Out-of-Home Care Age 12 and under in DCF-licensed Family Foster Homes	10. Former Foster Youth Ages 19-22 with Diploma or GED
	Standard:	97.0%	95.0%	86.0%	75.0%	55.0%	92.0%	95.0%
Weighting:	1.0	1.0	1.0	1.5	1.0	1.5	1.0	1.0
Lead Agency	Children in In-Home Care: Mar. 2014 - May. 2014	Children Exiting Care: Sep. 2013 - Nov. 2013	Children in Care 8 Days-12 Months in: July 2014	Children Entering Care in: May 2013 - July 2013	Children in Care 12+ Months: Aug. 1, 2013	Children Achieving Permanency in: May 2013 - July 2013	Children Ages 12 and Under in Licensed Care: July 31, 2014	Youth Receiving Services: July 31, 2014
Families First Network	94.3%	96.5%	86.0%	47.7%	62.1%	92.7%	93.6%	71.0%
Big Bend CBC (Circuit 2 & 14)	98.0%	98.5%	83.5%	31.1%	48.7%	94.4%	91.0%	59.7%
Partnership for Strong Families	95.6%	91.7%	87.1%	50.2%	62.5%	93.3%	97.4%	67.5%
Family Support Services North Fla	94.9%	95.6%	90.4%	41.0%	46.7%	94.9%	95.8%	53.2%
Kids First of Florida, Inc.	99.3%	100.0%	95.6%	21.6%	53.4%	97.3%	100.0%	77.7%
Community Partnership for Children	97.1%	95.0%	92.6%	37.0%	62.2%	92.5%	98.1%	50.6%
Family Integrity Program	91.8%	93.0%	80.5%	70.8%	72.5%	92.6%	100.0%	88.8%
Eckerd Community Alternatives	95.4%	98.1%	89.4%	57.4%	59.8%	93.1%	96.0%	74.5%
Sarasota Y/Safe Children Coalition	96.7%	97.0%	87.0%	50.0%	56.1%	97.2%	95.7%	74.1%
Eckerd Community Hillsborough	95.7%	96.9%	85.8%	44.4%	51.2%	91.9%	93.3%	76.3%
Children's Network of SW Florida	96.0%	96.3%	81.0%	51.2%	46.1%	92.3%	95.5%	60.3%
Kids Central, Inc.	98.1%	97.1%	85.7%	55.1%	54.6%	91.6%	94.8%	77.7%
CBC of Central FL (Circuit 9)	96.0%	98.7%	86.0%	41.0%	46.5%	92.7%	91.4%	69.6%
Heartland For Children	96.0%	98.0%	91.3%	45.9%	51.8%	93.3%	89.3%	52.1%
CBC of Central FL (Circuit 18)	95.1%	96.1%	90.1%	42.1%	41.9%	96.1%	88.8%	71.4%
Brevard Family Partnership	95.2%	95.7%	88.7%	54.5%	50.8%	94.0%	97.7%	76.1%
Devereux Families Inc.	96.8%	96.5%	85.3%	38.7%	38.8%	90.9%	70.2%	69.2%
ChildNet Palm Beach	96.5%	93.2%	91.2%	49.7%	49.8%	92.2%	87.5%	65.5%
ChildNet Inc	94.4%	98.1%	90.1%	40.9%	31.8%	89.4%	95.2%	72.2%
Our Kids of Miami-Dade/Monroe, Inc	97.1%	96.3%	76.7%	39.7%	43.2%	91.1%	88.4%	69.5%
<b>Statewide</b>	<b>96.1%</b>	<b>96.6%</b>	<b>86.5%</b>	<b>45.8%</b>	<b>50.3%</b>	<b>92.7%</b>	<b>92.7%</b>	<b>67.6%</b>
<b>Red Zone:</b>	<b>95.0%</b>	<b>93.0%</b>	<b>83.3%</b>	<b>45.0%</b>	<b>48.0%</b>	<b>87.0%</b>	<b>80.0%</b>	<b>50.0%</b>

# FS 773: Children Seen Every 30 Days



FS 773 – Percent of children under supervision who are required to be seen every 30 days who are seen every 30 days.



- Children not seen in 25 days or more
- Point in time as of 08-25-14 in MindShare
- All Primary and OTI Assignments

Agency	FSFN Data as of 08/17/14				Grand Total
	25 - 27	28 - 29	30	Over 30	
CHS	8	1	0	0	9
DEV	27	24	0	2	53
GCJFCS	29	2	0	0	31
OHU	8	0	0	0	8
<b>Grand Total</b>	<b>72</b>	<b>27</b>	<b>0</b>	<b>2</b>	<b>101</b>

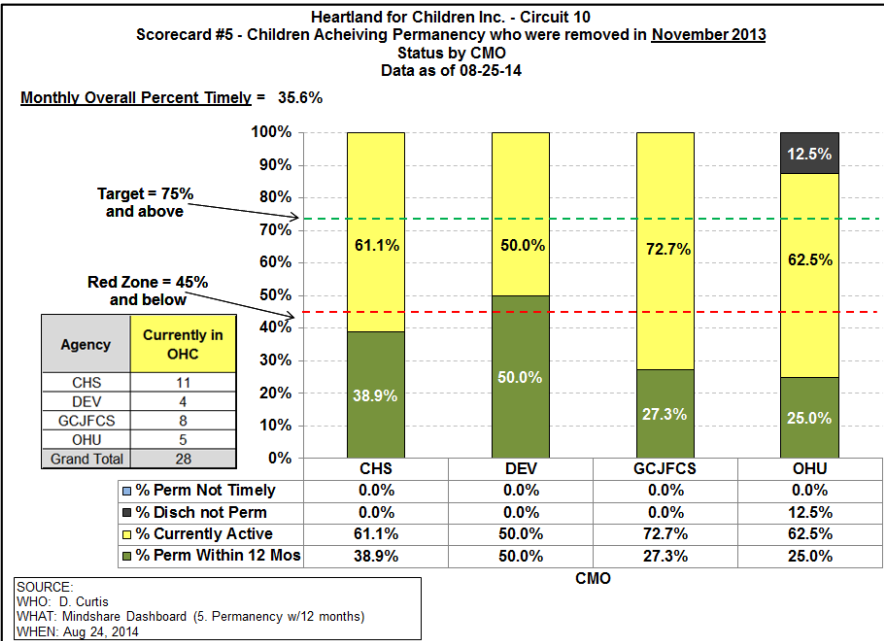
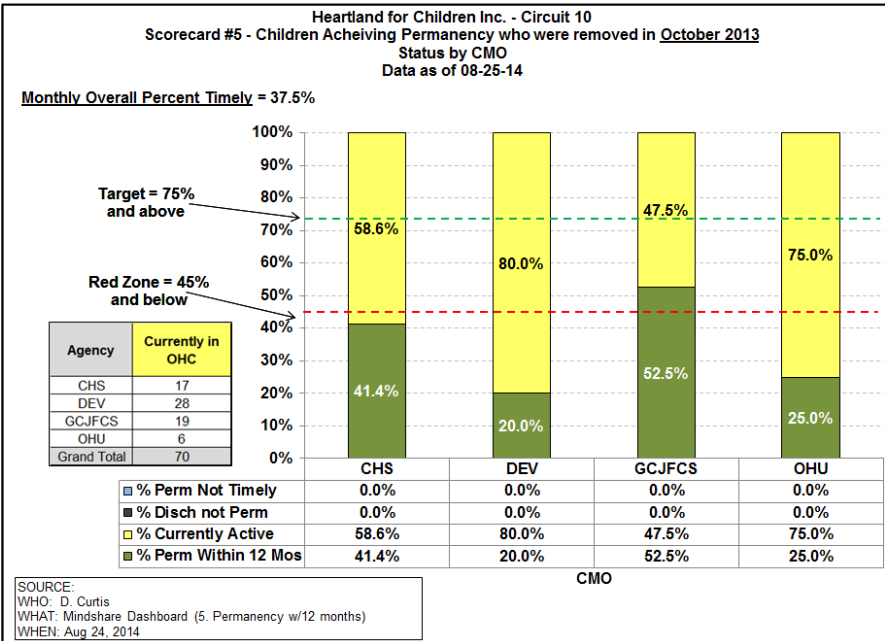
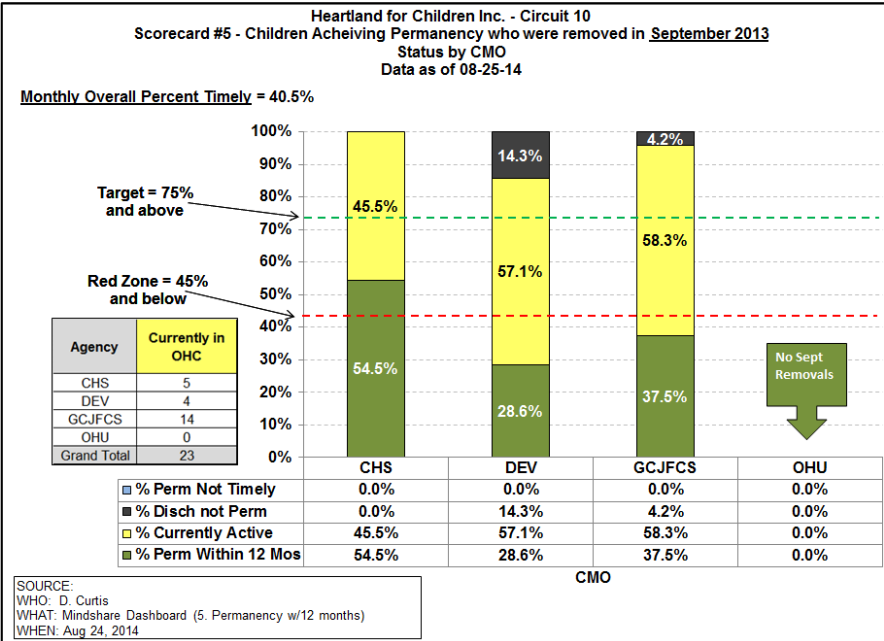
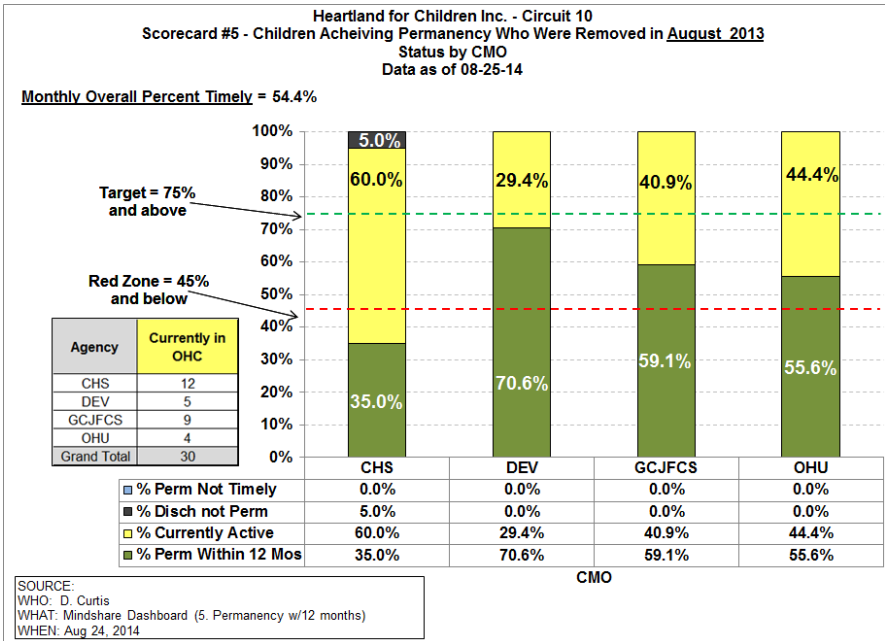
Source: MindShare my Dash page

# of Children Not Seen, Month of August 2014	
# Not Seen	Agency
4	CHS
45	DEV
8	GCJFCS
3	OHU
1	CPI
<b>61</b>	<b>Grand Total</b>

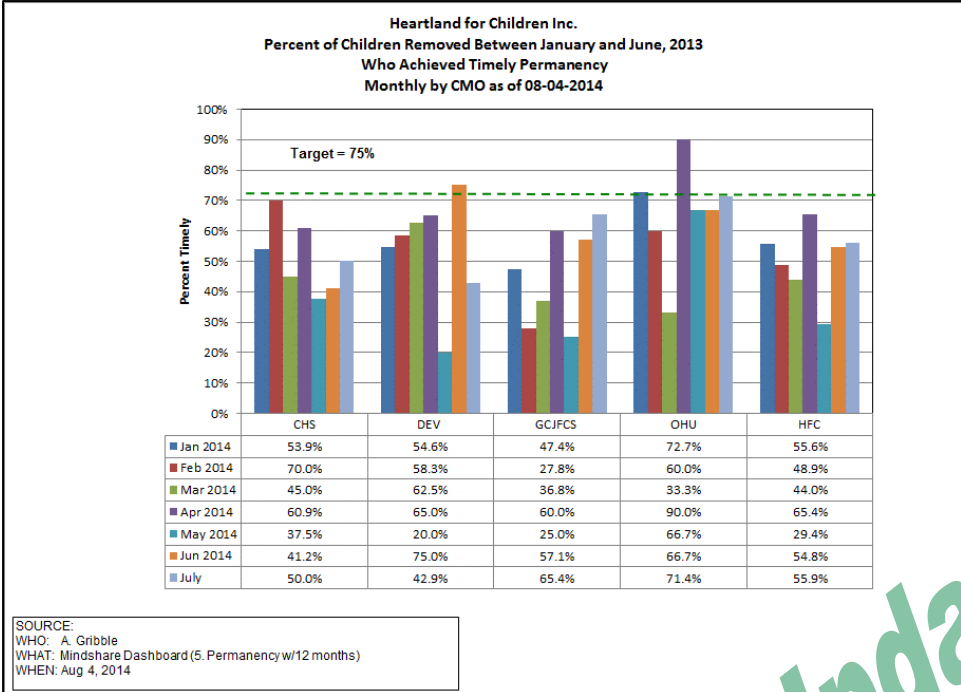
Source: FSFN Rpt  
"Children seen / not seen"



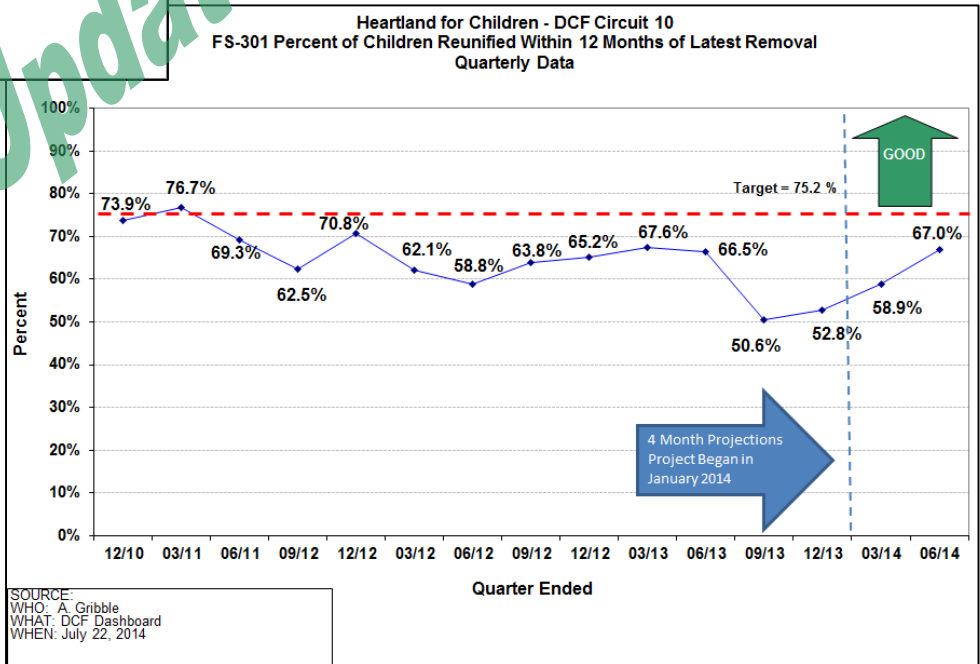
# Scorecard Measure 5. – Children Achieving Permanency within 12 months of entering care. Children removed Aug – Nov 2013.



Scorecard Measure 5. – Children Achieving Permanency within 12 months of entering care.



No Update





FY 14-15 Target: 75.2%

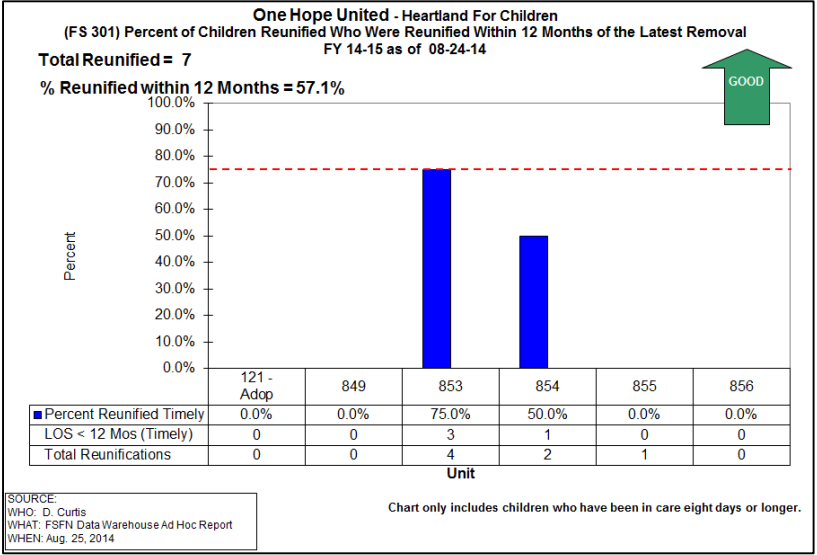
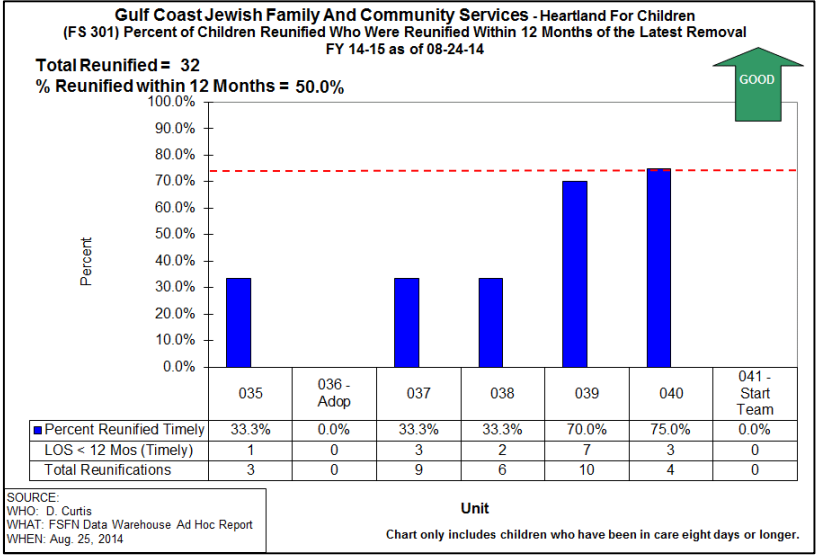
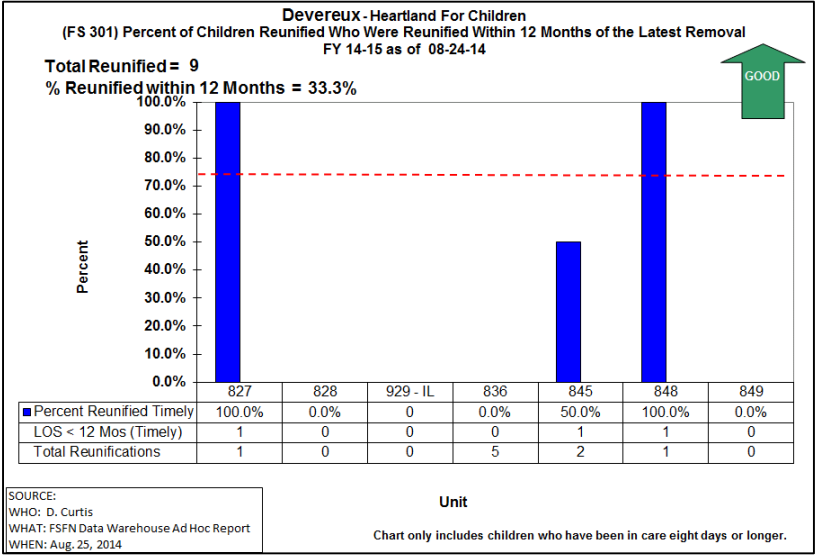
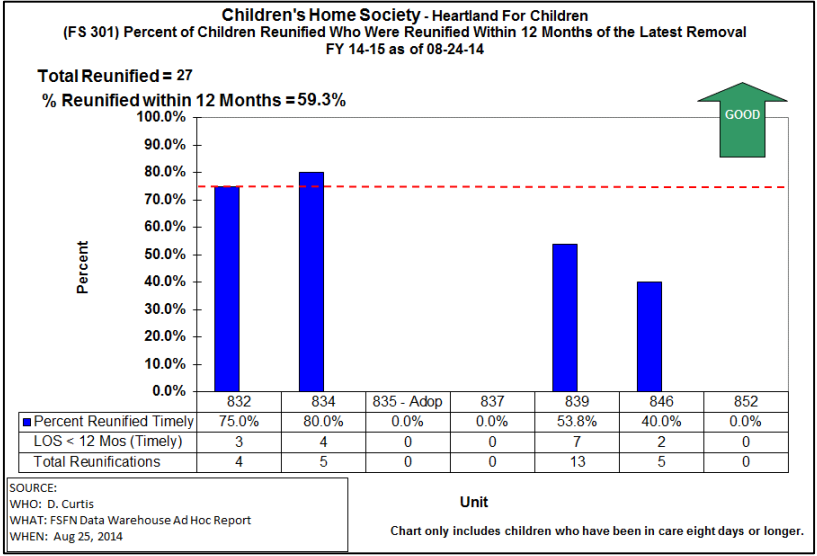
Fiscal Year to Date as of 08-24-14

Number of Reunifications: 75

Fiscal Year Performance: 52 %

Reunification and Perm Guardianships Entered into FSFN Week of 08/18/14 - 08/24/14					
Agency	Reunified		Perm Guardianship		Total Reunif / PG Total
	Total	Timely	Total	Timely	
CHS	5	5	0	0	5
DEV	1	0	0	0	1
GCJFCS	4	1	6	2	10
OHU	1	1	0	0	1
<b>Total</b>	<b>11</b>	<b>7</b>	<b>6</b>	<b>2</b>	<b>17</b>

Reunification and Perm Guardianships FY 14-15 Qtr 1 as of 08-26-14			
Agency	Reunifications	# Timely	% Timely
CHS	27	16	59.3%
DEV	9	3	33.3%
GCJFCS	32	16	50.0%
OHU	7	4	57.1%
<b>Total</b>	<b>75</b>	<b>39</b>	<b>52.0%</b>

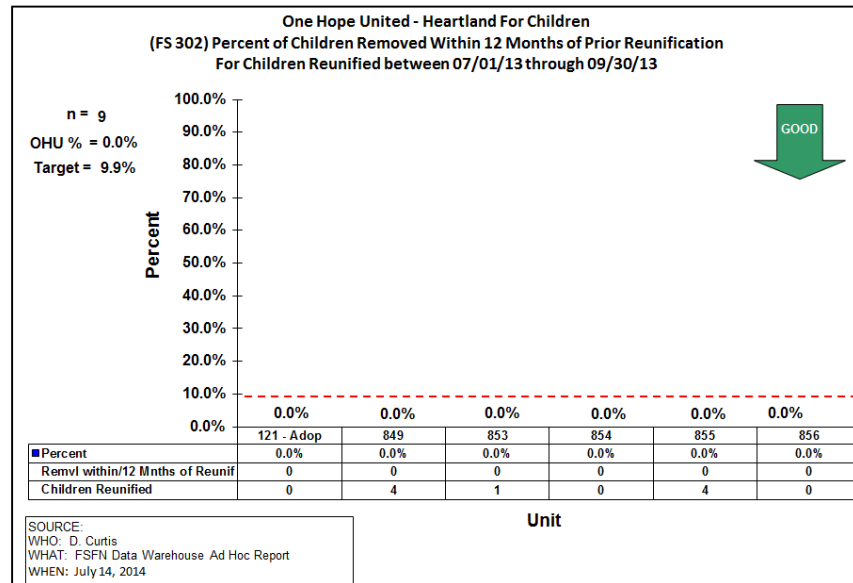
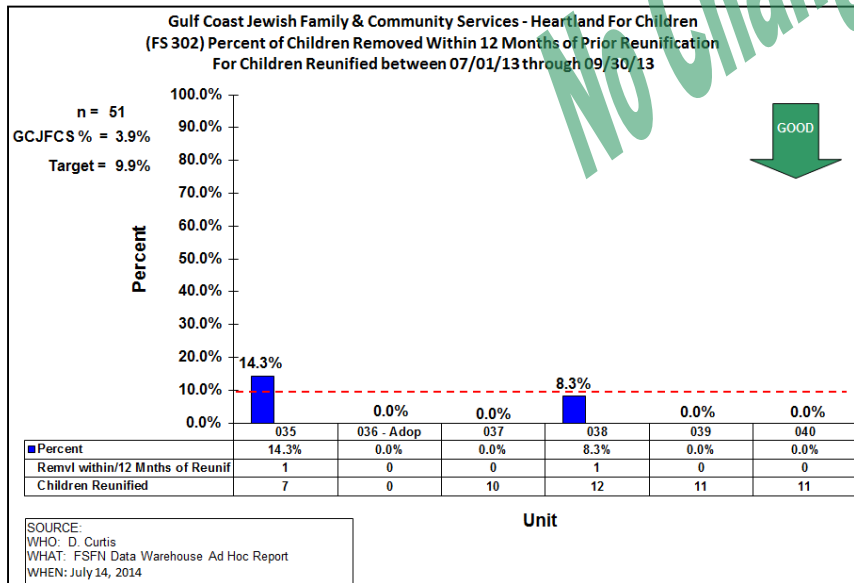
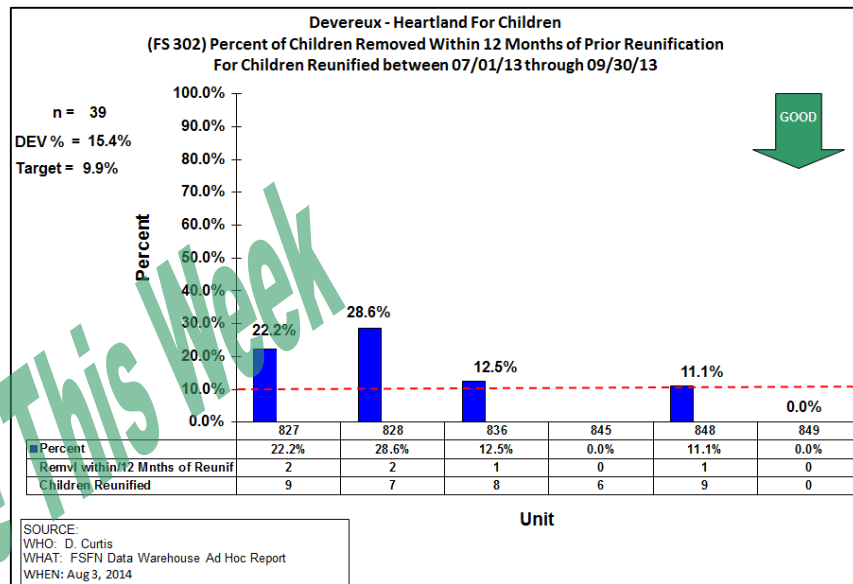
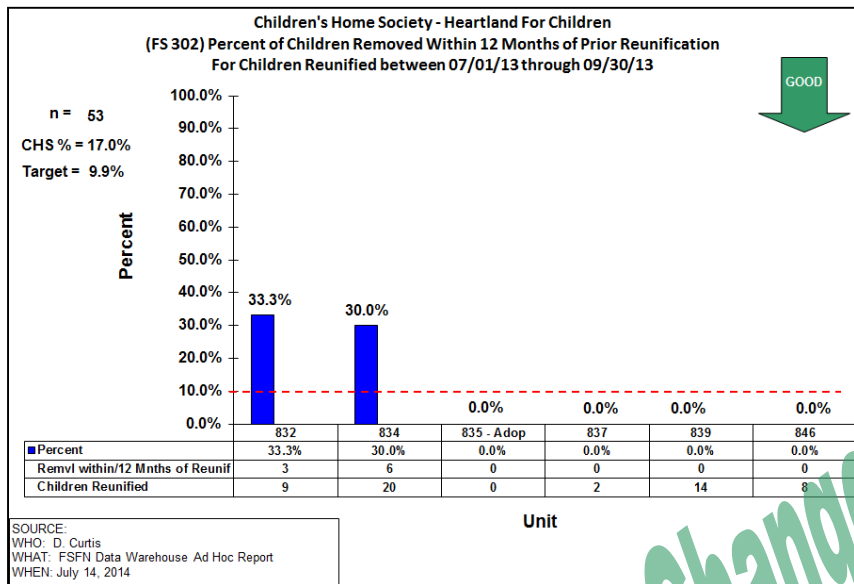


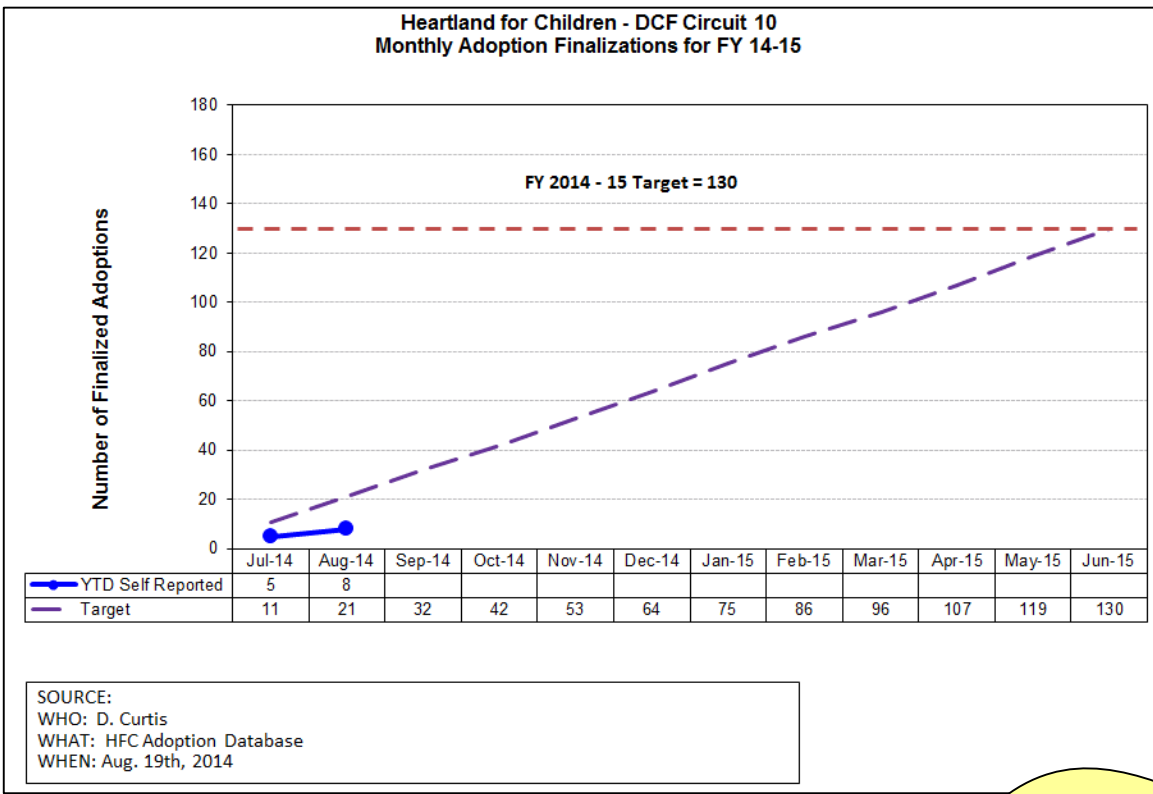
FS 301 - Percent of children reunified within 12 months of latest removal

1st Qtr. To Date Performance : 10.9 %

Number of Reunifications: 152 (07/01/13 – 09/30/13)

Number of Children who re-entered within 12 Months of Reunification: 17





**FS 303 – Percent of Adoptions Finalized Within 24 Months of Removal**

- TPR Database shows: 50.0%

FY 14-15 Upcoming Finalizations  
September 10<sup>th</sup>, 2014  
September 17<sup>th</sup>, 2014

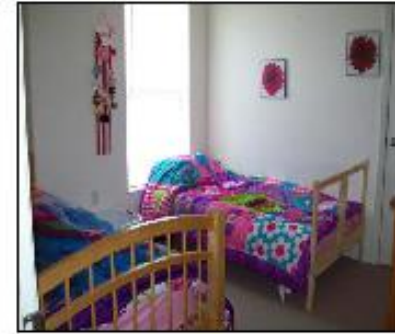
Manually Reported Adoption Data for FY 14-15 through :

Adoption Finalizations Credited to HFC YTD 14-15																														
CMO	Jul-2014		Aug-2014		Sep-2014		Oct-2014		Nov-2014		Dec-2014		Jan-2015		Feb-2015		Mar-2015		Apr-2015		May-2015		Jun-2015		Total					
	Proj	Actual	Proj	Actual	Proj	Actual	Proj	Actual	Proj	Actual	Proj	Actual	Proj	Actual	Proj	Actual	Proj	Actual	Proj	Actual	Proj	Actual	Proj	Actual	14-15 CBC Credit	14-15 Credit (Other Circuit)	Grand Total Adop.	% w/in 24 Mos CBC Credit	CMO Contract Target	% of Target Achieved
CHS	0	0	2	2	0	0	0	0	0	0	0	0	0	0	0	0	0	0	0	0	0	0	0	0	2	0	2	0.0%	0	0.0%
DEV	0	1	2	0	0	0	0	0	0	0	0	0	0	0	0	0	0	0	0	0	0	0	0	0	1	0	1	0.0%	0	0.0%
GCJFCS	0	4	0	0	0	0	0	0	0	0	0	0	0	0	0	0	0	0	0	0	0	0	0	0	4	0	4	0.0%	0	0.0%
OHU	0	0	0	1	0	0	0	0	0	0	0	0	0	0	0	0	0	0	0	0	0	0	0	0	1	0	1	0.0%	0	0.0%
<b>Total</b>	0	5	4	3	0	0	0	0	0	0	0	0	0	0	0	0	0	0	0	0	0	0	0	0	8	0	8	0.0%	0	

Source: HFC TPR Database

# Foster Home Profile

## The Cardin Family



**Name:** Jamie and Mike Cardin  
**Capacity:** 1 sibling group of 2, ages 0 to 6 years  
**Licensed:** 6/12/14  
**Relicensing Counselor:** Donna Segree-Lawson

### Family Composition:

Jamie and Mike reside in a single story home in Lakeland, FL. They share their home with their son, Logan, age 6, and daughter Madison, age 3. The home consists of four bedrooms, and two bathrooms.

### Interests/Hobbies:

Jamie is a stay at home mother and Mike is a police officer for the City of Lakeland. They both are active in their church and community. Jamie, Mike, Logan and Madison enjoy family outings to Chuck-e-Cheese, church activities, drive-ins, and beach, swim at Mike's mother's house, eat at Mike's parent's house and eat at Jamie's parent's house on Sunday afternoons. Jamie and Mike plan on having individual time with each child placed in their home by learning their likes and incorporating their likes into the family time.

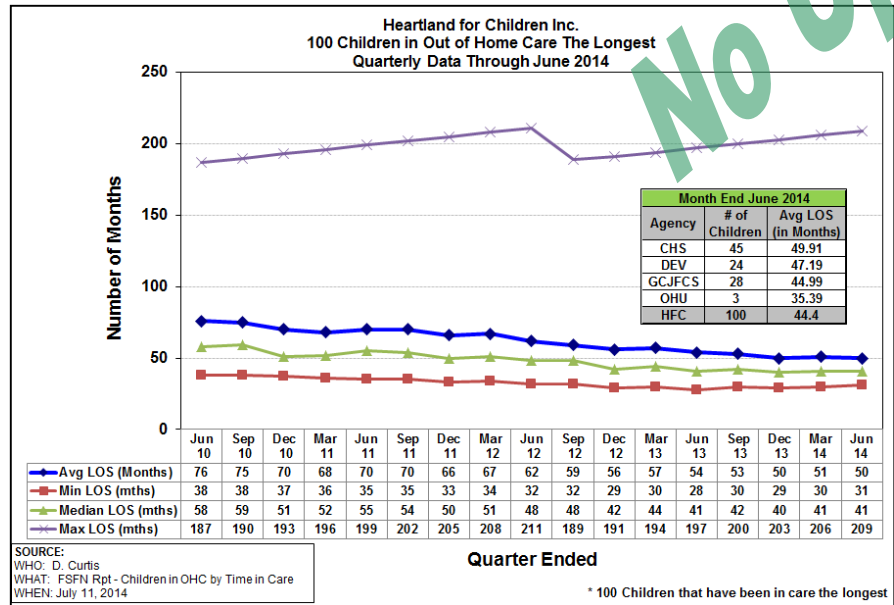
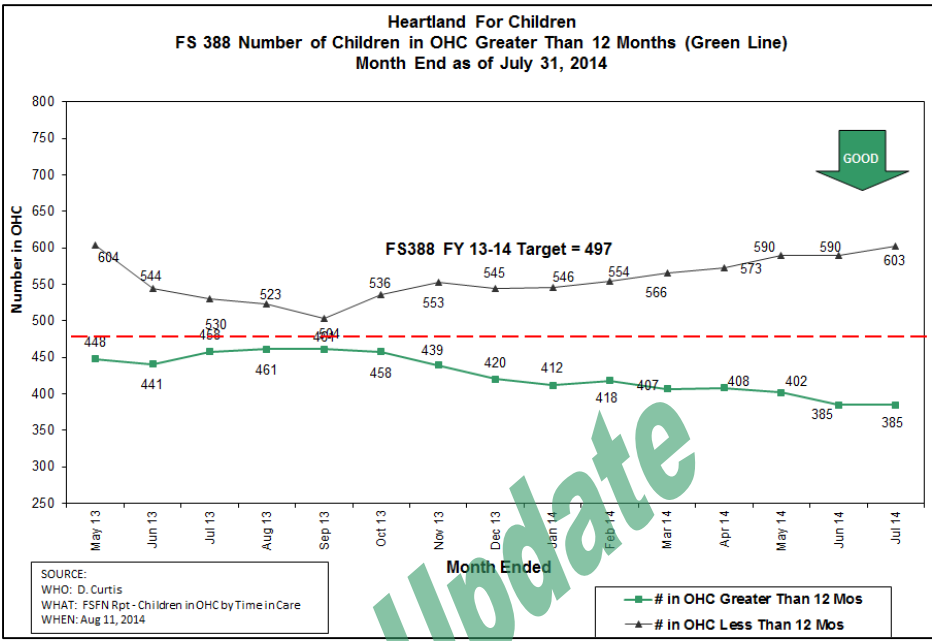
### Schools zoned for:

Sleepy Hill Elementary School (K-5)  
Lake Gibson Junior School (6-8)  
Lake Gibson High School (9-12)

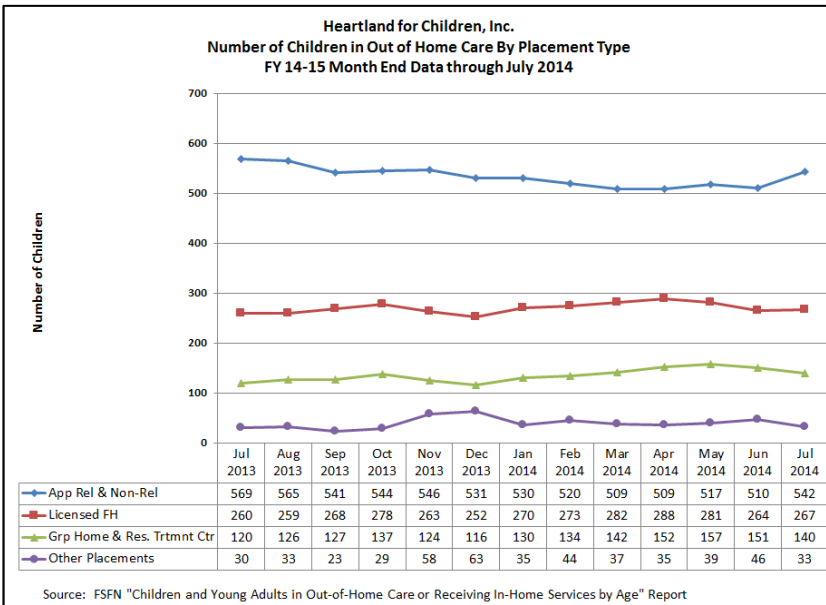
### Work Schedules:

Jamie is a stay at home mother. Mike is employed with the Lakeland Police Department.

# Children in out of home care by time in care and placement type



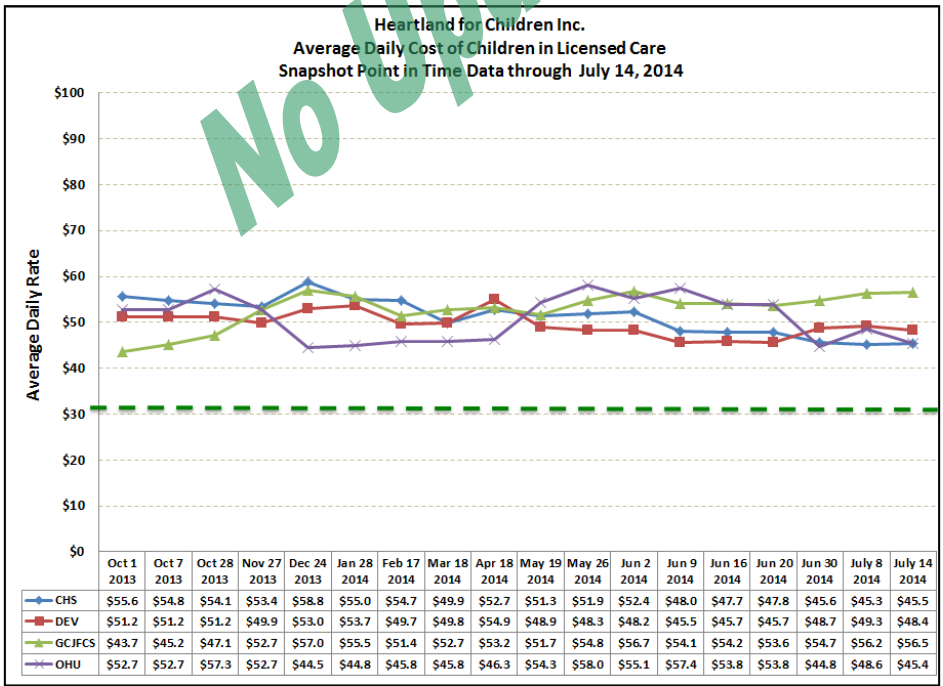
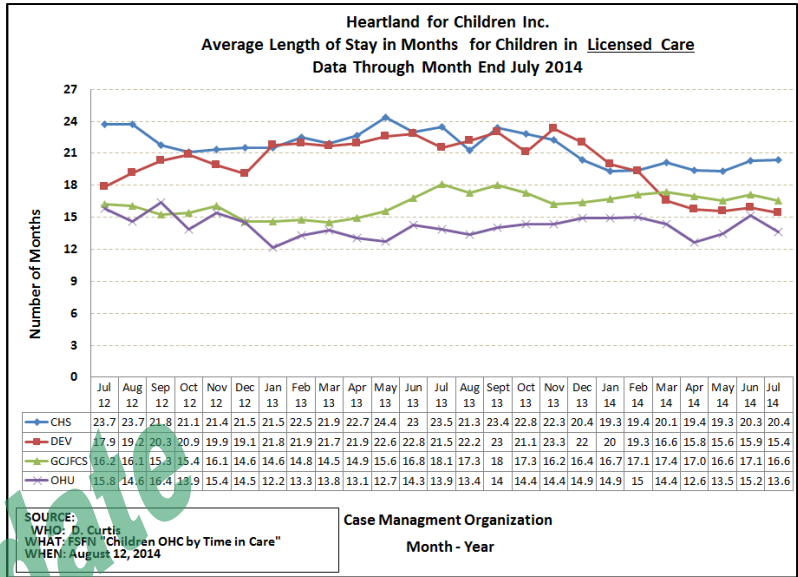
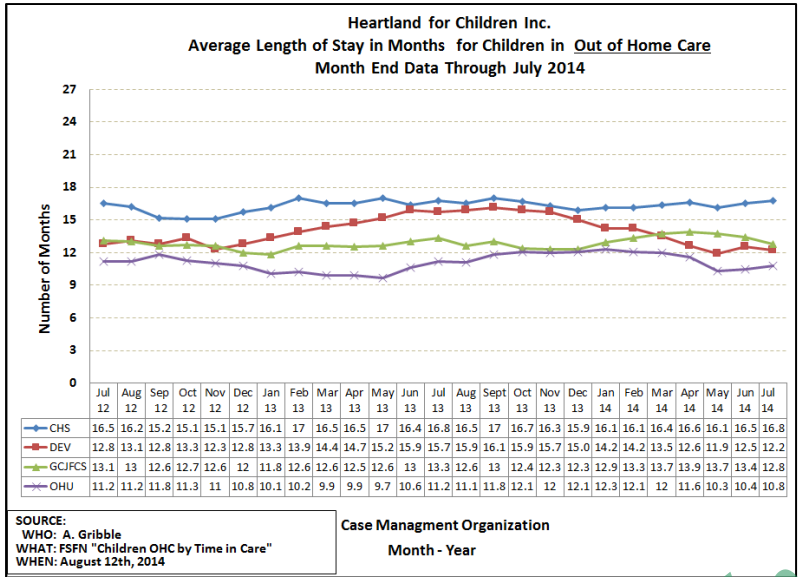
\* 100 Children that have been in care the longest



Children in Out of Home care by Placement Type and LOS

# Daily Average Cost and Length of Stay for Children in OHC and Licensed Placements

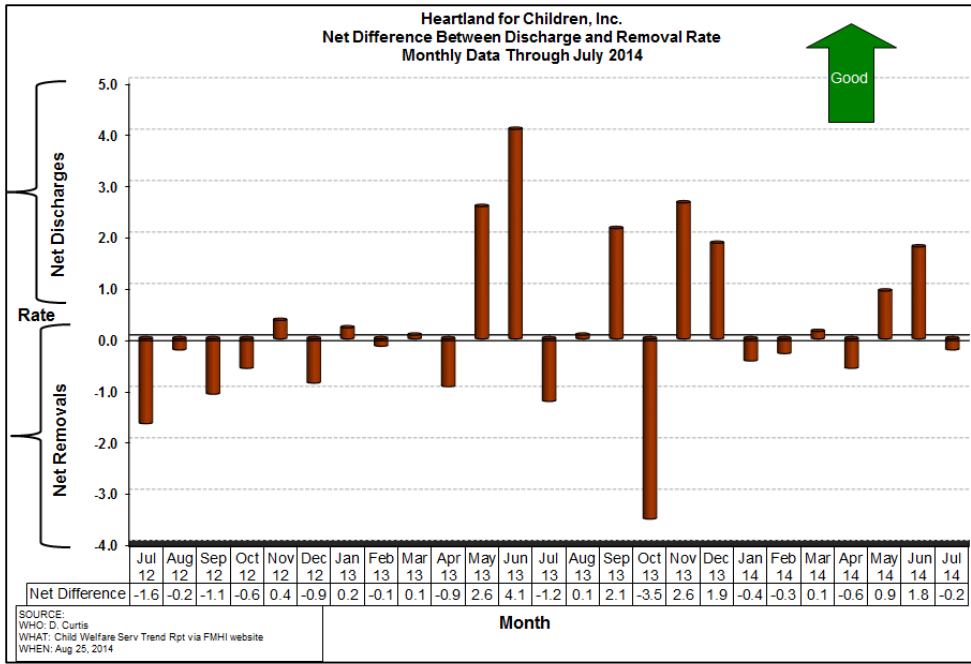
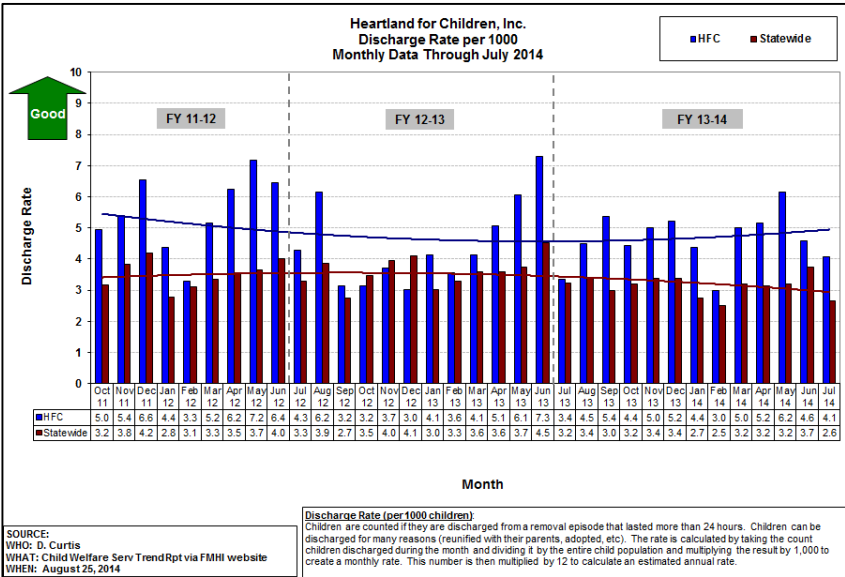
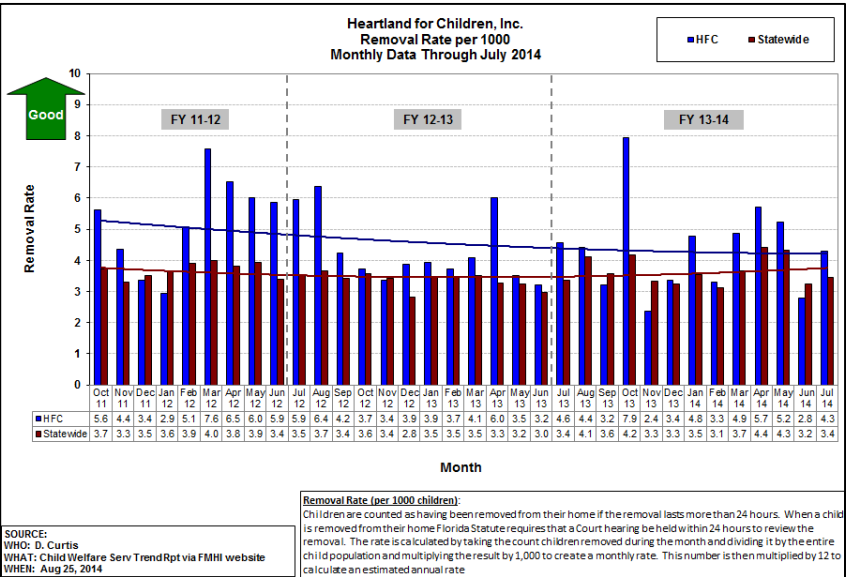
## By Case Management Organization



Supplemental Information



# Monthly Removal and Discharge Rates (per 1,000 Children) as of June 2014



Supplemental Information

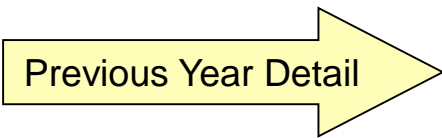


# CLS Weekly Shelter Report FY 2013 - 2014 as of July 14, 2014

CLS WEEKLY SHELTER REPORT - FY 2014-2015																		
	JUL	AUG	SEP	OCT	NOV	DEC	JAN	FEB	MAR	APR	MAY	JUN	14/15 Totals	13/14 Totals	12/13 Totals	11/12 Totals	10/11 Totals	09/10 Totals
<b># Of Shelter Hearings</b>																		
Polk	19	16	0	0	0	0	0	0	0	0	0	0	35	330	283	385	403	337
Highlands	2	5	0	0	0	0	0	0	0	0	0	0	7	17	29	47	56	45
Hardee	0	1	0	0	0	0	0	0	0	0	0	0	1	11	12	16	18	15
<b>Total</b>	<b>21</b>	<b>0</b>	<b>0</b>	<b>0</b>	<b>0</b>	<b>0</b>	<b>0</b>	<b>0</b>	<b>0</b>	<b>0</b>	<b>0</b>	<b>0</b>	<b>43</b>	<b>358</b>	<b>315</b>	<b>448</b>	<b>477</b>	<b>397</b>
<b># Children Removed</b>																		
Polk	38	11	0	0	0	0	0	0	0	0	0	0	49	578	494	643	665	555
Highlands	6	1	0	0	0	0	0	0	0	0	0	0	7	27	46	84	81	67
Hardee	0	4	0	0	0	0	0	0	0	0	0	0	4	18	20	26	29	21
<b>Total</b>	<b>44</b>	<b>16</b>	<b>0</b>	<b>0</b>	<b>0</b>	<b>0</b>	<b>0</b>	<b>0</b>	<b>0</b>	<b>0</b>	<b>0</b>	<b>0</b>	<b>60</b>	<b>623</b>	<b>560</b>	<b>753</b>	<b>775</b>	<b>643</b>
<b>Total Children Denied Shelter</b>																		
Polk	0	0	0	0	0	0	0	0	0	0	0	0	0	1	8	5	6	2
Highlands	0	1	0	0	0	0	0	0	0	0	0	0	1	0	0	0	1	0
Hardee	0	0	0	0	0	0	0	0	0	0	0	0	0	0	0	0	0	0
<b>Total</b>	<b>0</b>	<b>1</b>	<b>0</b>	<b>0</b>	<b>0</b>	<b>0</b>	<b>0</b>	<b>0</b>	<b>0</b>	<b>0</b>	<b>0</b>	<b>0</b>	<b>1</b>	<b>8</b>	<b>5</b>	<b>6</b>	<b>7</b>	<b>2</b>
<b># Children Placed with Relative</b>																		
Polk	20	16	0	0	0	0	0	0	0	0	0	0	36	296	280	357	401	309
Highlands	0	5	0	0	0	0	0	0	0	0	0	0	5	24	22	40	34	33
Hardee	0	0	0	0	0	0	0	0	0	0	0	0	0	13	16	15	21	14
<b>Total</b>	<b>20</b>	<b>21</b>	<b>0</b>	<b>0</b>	<b>0</b>	<b>0</b>	<b>0</b>	<b>0</b>	<b>0</b>	<b>0</b>	<b>0</b>	<b>0</b>	<b>41</b>	<b>333</b>	<b>318</b>	<b>412</b>	<b>456</b>	<b>356</b>
<b># Children Placed with Non Relative</b>																		
Polk	9	4	0	0	0	0	0	0	0	0	0	0	13	52	46	39	57	32
Highlands	2	0	0	0	0	0	0	0	0	0	0	0	2	1	4	14	13	11
Hardee	0	4	0	0	0	0	0	0	0	1	0	0	5	4	0	2	1	1
<b>Total</b>	<b>11</b>	<b>8</b>	<b>0</b>	<b>0</b>	<b>0</b>	<b>0</b>	<b>0</b>	<b>0</b>	<b>0</b>	<b>1</b>	<b>0</b>	<b>0</b>	<b>20</b>	<b>57</b>	<b>50</b>	<b>55</b>	<b>71</b>	<b>44</b>
<b># Children Placed in Foster Care</b>																		
Polk	9	13	0	0	0	0	0	0	0	0	0	0	22	230	169	247	207	209
Highlands	4	2	0	0	0	0	0	0	0	0	0	0	6	2	19	30	34	21
Hardee	0	0	0	0	0	0	0	0	0	0	0	0	0	3	4	9	7	11
<b>Total</b>	<b>13</b>	<b>15</b>	<b>0</b>	<b>0</b>	<b>0</b>	<b>0</b>	<b>0</b>	<b>0</b>	<b>0</b>	<b>0</b>	<b>0</b>	<b>0</b>	<b>28</b>	<b>235</b>	<b>192</b>	<b>286</b>	<b>248</b>	<b>241</b>

<b>% of Children Sheltered Placed in Foster Care</b>						
<b>Data as of 08/04/2014</b>						
Month	09-10	10-11	11-12	12-13	13-14	14-15
Jul	42.0%	17.0%	35.8%	32.8%	44.7%	29.5%
Aug	18.2%	24.7%	25.6%	32.0%	24.1%	
Sep	27.9%	30.2%	51.4%	45.3%	26.2%	
Oct	26.2%	31.6%	39.2%	34.8%	44.3%	
Nov	38.6%	42.9%	37.3%	40.0%	44.4%	
Dec	39.5%	38.8%	37.8%	30.0%	30.9%	
Jan	66.7%	34.4%	51.4%	37.8%	37.5%	
Feb	29.4%	27.8%	27.3%	42.2%	47.6%	
Mar	48.3%	29.8%	47.6%	36.1%	47.4%	
Apr	39.2%	45.6%	30.6%	30.3%	43.9%	
May	40.6%	32.0%	41.2%	27.3%	28.8%	
Jun	27.4%	29.3%	27.2%	19.0%	31.3%	
<b>FY Total</b>	<b>37.5%</b>	<b>32.0%</b>	<b>38.0%</b>	<b>34.3%</b>	<b>37.7%</b>	

<b>Shelter Count for the week of August 19 - August - 25, 2014</b>			
	Polk	Highlands	Hardee
<b>Shelters</b>	<b>4</b>	<b>2</b>	<b>0</b>
<b>Children Removed</b>	<b>5</b>	<b>1</b>	<b>0</b>
<b>Placed in Foster Care</b>	<b>1</b>	<b>0</b>	<b>0</b>
<b>Placed w/ a Relative</b>	<b>3</b>	<b>2</b>	<b>0</b>
<b>Placed w/a Non-Rel</b>	<b>1</b>	<b>0</b>	<b>0</b>

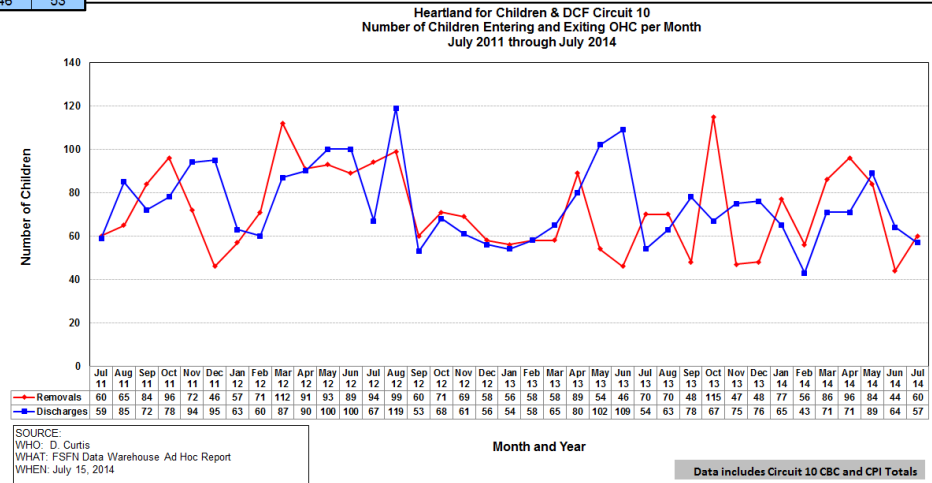


CLS WEEKLY SHELTER REPORT - FY 2013-2014																		
	JUL	AUG	SEP	OCT	NOV	DEC	JAN	FEB	MAR	APR	MAY	JUN	13/14 Totals	12/13 Totals	11/12 Totals	10/11 Totals	09/10 Totals	08/09 Totals
<b># Of Shelter Hearings</b>																		
Polk	21	28	21	42	15	33	29	30	25	30	32	24	330	283	385	403	337	304
Highlands	0	2	0	1	3	1	3	1	2	3	1	0	17	29	47	56	45	54
Hardee	2	1	0	2	1	0	0	0	1	3	1	0	11	12	16	18	15	23
<b>Total</b>	<b>23</b>	<b>31</b>	<b>21</b>	<b>45</b>	<b>19</b>	<b>34</b>	<b>32</b>	<b>31</b>	<b>28</b>	<b>36</b>	<b>34</b>	<b>24</b>	<b>358</b>	<b>315</b>	<b>448</b>	<b>477</b>	<b>397</b>	<b>381</b>
<b># Children Removed</b>																		
Polk	44	50	42	75	21	54	51	41	53	51	64	32	578	494	643	665	555	526
Highlands	0	2	0	2	4	1	5	1	3	8	1	0	27	46	84	81	67	87
Hardee	3	2	0	2	2	0	0	0	1	7	1	0	18	20	26	29	21	31
<b>Total</b>	<b>47</b>	<b>54</b>	<b>42</b>	<b>79</b>	<b>27</b>	<b>55</b>	<b>56</b>	<b>42</b>	<b>57</b>	<b>66</b>	<b>66</b>	<b>32</b>	<b>623</b>	<b>560</b>	<b>753</b>	<b>775</b>	<b>643</b>	<b>644</b>
<b>Total Children Denied Shelter</b>																		
Polk	0	0	0	1	0	0	0	0	0	0	0	0	1	8	5	6	2	15
Highlands	0	0	0	0	0	0	0	0	0	0	0	0	0	0	0	0	1	0
Hardee	0	0	0	0	0	0	0	0	0	0	0	0	0	0	0	0	0	0
<b>Total</b>	<b>0</b>	<b>0</b>	<b>0</b>	<b>1</b>	<b>0</b>	<b>0</b>	<b>0</b>	<b>0</b>	<b>0</b>	<b>0</b>	<b>0</b>	<b>0</b>	<b>1</b>	<b>8</b>	<b>5</b>	<b>6</b>	<b>2</b>	<b>15</b>
<b># Children Placed with Relative</b>																		
Polk	19	32	27	35	8	33	29	18	19	22	35	19	296	280	357	401	309	287
Highlands	0	1	0	2	3	1	5	1	3	8	0	0	24	22	40	34	33	48
Hardee	3	2	0	2	0	0	0	0	0	6	0	0	13	16	15	21	14	22
<b>Total</b>	<b>22</b>	<b>35</b>	<b>27</b>	<b>37</b>	<b>13</b>	<b>34</b>	<b>34</b>	<b>19</b>	<b>22</b>	<b>36</b>	<b>35</b>	<b>19</b>	<b>333</b>	<b>318</b>	<b>412</b>	<b>456</b>	<b>356</b>	<b>357</b>
<b># Children Placed with Non Relative</b>																		
Polk	4	5	4	6	2	4	1	3	8	0	12	3	52	46	39	57	32	22
Highlands	0	1	0	0	0	0	0	0	0	0	0	0	4	14	13	11	10	
Hardee	0	2	0	1	0	0	0	0	1	0	0	0	4	0	2	1	1	2
<b>Total</b>	<b>4</b>	<b>8</b>	<b>4</b>	<b>7</b>	<b>2</b>	<b>4</b>	<b>1</b>	<b>3</b>	<b>8</b>	<b>1</b>	<b>12</b>	<b>3</b>	<b>57</b>	<b>50</b>	<b>55</b>	<b>71</b>	<b>44</b>	<b>34</b>
<b># Children Placed in Foster Care</b>																		
Polk	21	13	11	34	11	17	21	20	26	29	17	10	230	169	247	207	209	207
Highlands	0	0	0	1	0	0	0	0	0	1	0	2	19	30	34	21	30	
Hardee	0	0	0	1	0	0	0	0	1	0	0	0	3	4	9	7	11	7
<b>Total</b>	<b>21</b>	<b>13</b>	<b>11</b>	<b>35</b>	<b>12</b>	<b>17</b>	<b>21</b>	<b>20</b>	<b>27</b>	<b>29</b>	<b>19</b>	<b>10</b>	<b>235</b>	<b>192</b>	<b>286</b>	<b>248</b>	<b>241</b>	<b>244</b>

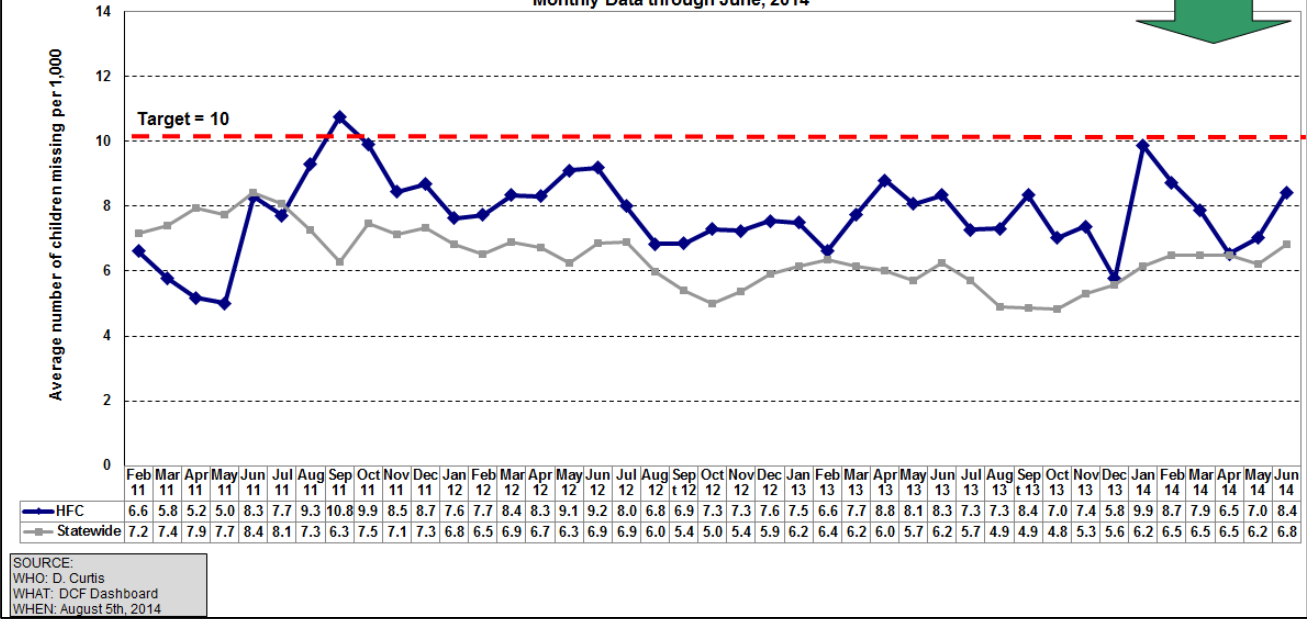
Supplemental Information

ESI Data for Fiscal Year July 1, 2014 - June 30, 2015																			
	JUL	AUG	SEPT	OCT	NOV	DEC	JAN	FEB	MAR	APR	MAY	JUN	14-15 Totals	13-14 Totals	12/13 Totals	11/12 Totals	10/11 Totals	09/10 Totals	08/09 Totals
<b>Number of Children</b>																			
CHS	19	15	0	0	0	0	0	0	0	0	0	0	34	304	274	352	480	341	340
Devereux	17	12	0	0	0	0	0	0	0	0	0	0	29	303	274	360	485	344	343
GCCC	25	17	0	0	0	0	0	0	0	0	0	0	42	312	285	351	488	349	342
One Hope	27	23	0	0	0	0	0	0	0	0	0	0	50	380	387	390	301	194	291
<b>Total</b>	<b>88</b>	<b>67</b>	<b>0</b>	<b>0</b>	<b>0</b>	<b>0</b>	<b>0</b>	<b>0</b>	<b>0</b>	<b>0</b>	<b>0</b>	<b>0</b>	<b>155</b>	<b>1299</b>	<b>1220</b>	<b>1453</b>	<b>1758</b>	<b>1228</b>	<b>1316</b>
<b>Out of Home Care</b>																			
CHS	13	13	0	0	0	0	0	0	0	0	0	0	26	153	143	175	217	164	136
Devereux	13	7	0	0	0	0	0	0	0	0	0	0	20	177	154	191	212	165	138
GCCC	20	11	0	0	0	0	0	0	0	0	0	0	31	125	136	209	218	168	131
One Hope	2	12	0	0	0	0	0	0	0	0	0	0	14	48	68	99	110	64	87
<b>Total</b>	<b>48</b>	<b>43</b>	<b>0</b>	<b>0</b>	<b>0</b>	<b>0</b>	<b>0</b>	<b>0</b>	<b>0</b>	<b>0</b>	<b>0</b>	<b>0</b>	<b>91</b>	<b>503</b>	<b>501</b>	<b>674</b>	<b>761</b>	<b>561</b>	<b>492</b>
<b>In-Home</b>																			
CHS	4	1	0	0	0	0	0	0	0	0	0	0	5	68	89	97	116	72	105
Devereux	1	0	0	0	0	0	0	0	0	0	0	0	1	52	72	111	110	89	97
GCCC	0	0	0	0	0	0	0	0	0	0	0	0	0	63	90	82	119	81	95
One Hope	0	1	0	0	0	0	0	0	0	0	0	0	1	13	16	29	32	59	69
<b>Total</b>	<b>5</b>	<b>2</b>	<b>0</b>	<b>0</b>	<b>0</b>	<b>0</b>	<b>0</b>	<b>0</b>	<b>0</b>	<b>0</b>	<b>0</b>	<b>0</b>	<b>7</b>	<b>196</b>	<b>267</b>	<b>329</b>	<b>377</b>	<b>301</b>	<b>366</b>
<b>NON-JUDICIAL IN HOME SERVICES</b>																			
CHS	0	0	0	0	0	0	0	0	0	0	0	0	0	35	2	14	51	1	9
Devereux	0	1	0	0	0	0	0	0	0	0	0	0	1	34	3	9	50	1	39
GCCC	3	5	0	0	0	0	0	0	0	0	0	0	8	73	13	10	46	0	99
One Hope	1	0	0	0	0	0	0	0	0	0	0	0	1	17	0	14	31	0	1
<b>Total</b>	<b>4</b>	<b>6</b>	<b>0</b>	<b>0</b>	<b>0</b>	<b>0</b>	<b>0</b>	<b>0</b>	<b>0</b>	<b>0</b>	<b>0</b>	<b>0</b>	<b>10</b>	<b>159</b>	<b>18</b>	<b>47</b>	<b>178</b>	<b>2</b>	<b>148</b>
<b>OTI / ICPC Courtesy Supervision</b>																			
CHS	0	0	0	0	0	0	0	0	0	0	0	0	0	2	0	4	44	41	27
Devereux	0	0	0	0	0	0	0	0	0	0	0	0	0	1	0	2	43	46	54
GCCC	0	0	0	0	0	0	0	0	0	0	0	0	0	0	1	1	44	47	51
One Hope	22	8	0	0	0	0	0	0	0	0	0	0	30	291	286	237	110	38	115
<b>Total</b>	<b>22</b>	<b>8</b>	<b>0</b>	<b>0</b>	<b>0</b>	<b>0</b>	<b>0</b>	<b>0</b>	<b>0</b>	<b>0</b>	<b>0</b>	<b>0</b>	<b>30</b>	<b>294</b>	<b>287</b>	<b>244</b>	<b>241</b>	<b>172</b>	<b>247</b>
<b>Reinstatement of Protective Services Supervision (Notice of Hearings)</b>																			
CHS	0	0	0	0	0	0	0	0	0	0	0	0	0	19	26	32	35	43	29
Devereux	2	1	0	0	0	0	0	0	0	0	0	0	3	29	24	13	48	34	34
GCCC	1	2	0	0	0	0	0	0	0	0	0	0	3	30	15	16	31	39	36
One Hope	2	1	0	0	0	0	0	0	0	0	0	0	3	6	8	8	14	22	10
<b>Total</b>	<b>5</b>	<b>4</b>	<b>0</b>	<b>0</b>	<b>0</b>	<b>0</b>	<b>0</b>	<b>0</b>	<b>0</b>	<b>0</b>	<b>0</b>	<b>0</b>	<b>9</b>	<b>84</b>	<b>73</b>	<b>69</b>	<b>128</b>	<b>138</b>	<b>109</b>
<b>Adding of a Child(ren) to Open Service Cases</b>																			
CHS	2	0	0	0	0	0	0	0	0	0	0	0	2	28	19	27	16	14	17
Devereux	1	0	0	0	0	0	0	0	0	0	0	0	1	9	18	24	17	9	7
GCCC	1	0	0	0	0	0	0	0	0	0	0	0	1	13	22	21	19	13	14
One Hope	0	0	0	0	0	0	0	0	0	0	0	0	0	5	5	11	2	10	15
<b>Total</b>	<b>4</b>	<b>0</b>	<b>0</b>	<b>0</b>	<b>0</b>	<b>0</b>	<b>0</b>	<b>0</b>	<b>0</b>	<b>0</b>	<b>0</b>	<b>0</b>	<b>4</b>	<b>55</b>	<b>64</b>	<b>83</b>	<b>54</b>	<b>46</b>	<b>53</b>

Neighbor To Family - Weekly Census Numbers		
Data for week ended 08-24-14		
Referral Type	Number of Families	Number of Children
CPI - Safety Management	1	1
CPI- Family Support Services	8	17
Prevention - Community Referral	2	4
Speical Conditions Report	1	9



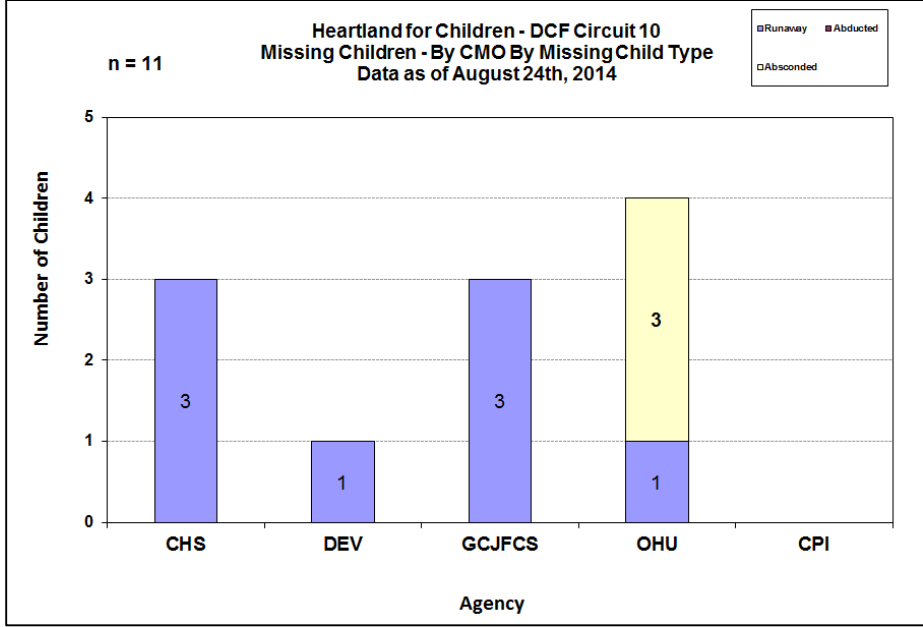
Heartland for Children - DCF Circuit 10  
 FS-108 Average Number of Children Who Are Missing per 1,000 Children in In-Home and Out-of-Home Care  
 Monthly Data through June, 2014



FS 108 – Average number of children who are missing per 1,000 children in in-home and out-of home care.

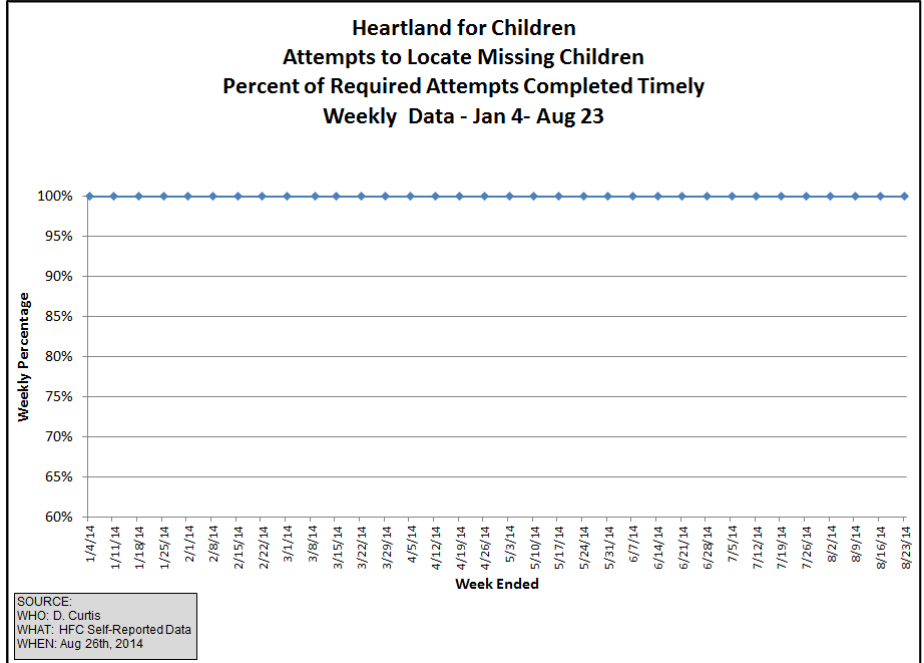
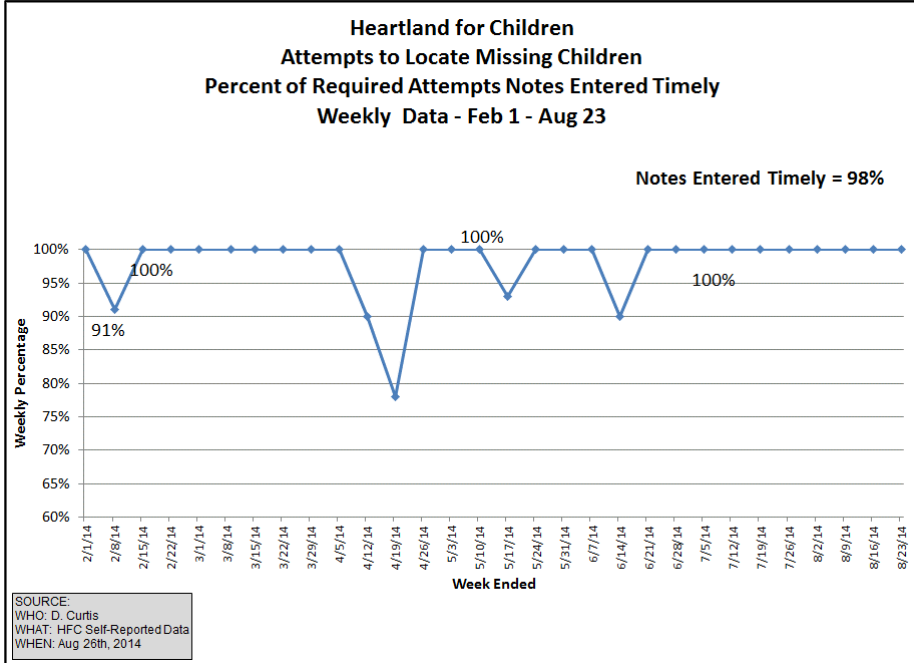
Circuit 10 - Weekly Missing Children Report

Reporting Date	Number of Missing Youth as of Reporting Date						Total New Episodes Month to Date	Total Recoveries Month to Date	Timely Reporting Compliance This Week	Timely Reporting Compliance Mnth to Date
	Total	CHS	DEV	GCJFCS	OHU	CPI				
M/End Jul '12	13	4	2	3	4	0	19	17	100%	
M/End Aug '12	12	4	2	2	4	0	27	26	100%	
M/End Sep '12	14	5	2	3	4	0	40	36	98%	
M/End Oct '12	12	4	2	2	4	0	23	26	100%	
M/End Nov '12	13	5	2	2	4	0	10	9	100%	
M/End Dec '12	12	4	1	4	3	0	21	18	100%	
M/End Jan '13	11	3	1	3	4	0	23	22	100%	
M/End Feb '13	11	2	1	4	4	0	18	18	100%	
M/End Mar '13	14	2	1	8	3	0	27	25	96%	
M/End Apr '13	15	4	1	9	4	0	32	31	88%	
M/End May '13	12	3	1	4	4	0	28	32	100%	
M/End Jun '13	14	4	2	4	4	0	48	47	100%	
M/End Jul '13	11	2	1	4	3	0	25	27	92%	
M/End Aug '13	11	3	1	4	3	0	25	24	96%	
M/End Sept '13	12	3	2	4	3	0	29	28	100%	
M/End Oct '13	11	2	1	4	4	0	28	24	100%	
M/End Nov '13	9	2	2	4	4	0	19	16	95%	
M/End Dec '13	12	5	1	2	4	0	20	17	100%	
M/End Jan 14	15	7	0	4	4	0	25	20	83%	
M/End Feb 14	13	5	0	3	4	1	19	18	95%	
M/End Mar 14	9	3	0	3	3	0	21	24	95%	
M/End Apr '14	11	2	2	4	3	0	21	19	95%	
M/End May '14	13	5	0	3	5	0	34	31	100%	
M/End Jun '14	11	4	2	1	4	0	30	34	75%	
M/End July '14	10	3	1	1	5	0	16	14	100%	
8/3/2014	11	4	1	2	4	0	3	2	100%	
8/10/2014	11	3	1	3	4	0	10	9	100%	
8/17/2014	11	3	1	3	4	0	14	13	75%	
8/24/2014	11	3	1	3	4	0	17	16	100%	



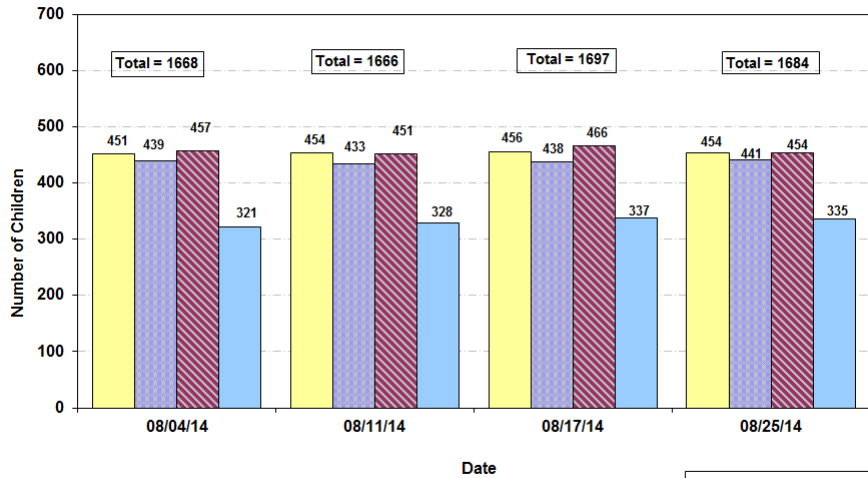
HFC – DCF Circuit 10  
 Attempt(s) to Locate Note(s) Entered Within 24 Hours

Attempts to Locate Week of 08-17-14 through 08-23-14					
Agency	Required Completed	Required Completed Timely	Percentage Completed Timely	Voluntarily Completed	Attempt(s) to Locate note(s) entered within 24 hours
CHS	2	2	100%	1	100%
DEV	1	1	100%	1	100%
GCJFCS	2	2	100%	0	100%
OHU	0	n/a	n/a	3	100%
PI	0	n/a	n/a	n/a	n/a
<b>Total</b>	<b>5</b>	<b>100%</b>	<b>100%</b>	<b>5</b>	<b>100%</b>



# Caseload Census

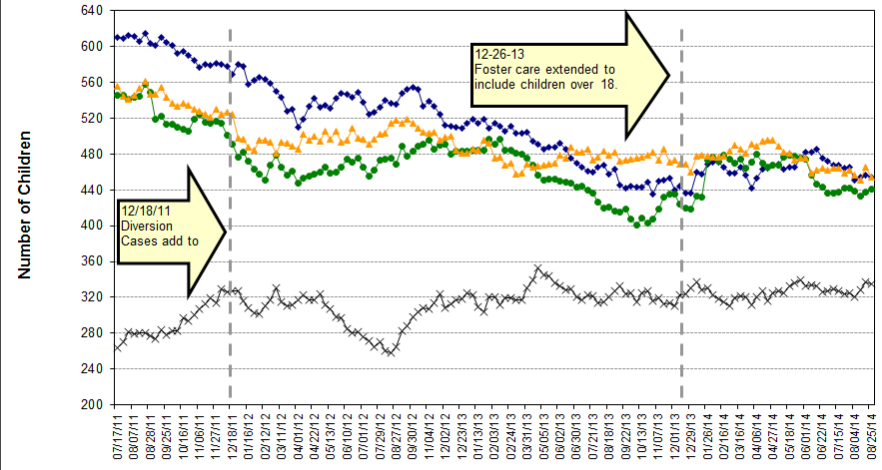
**Heartland for Children - DCF Circuit 10  
CBC Services Weekly Caseload Census  
Number of Children By CMO**



SOURCE:  
WHO: D. Curtis  
WHAT: FSN CARS Report  
WHEN: Aug. 25th, 2014

Legend: CHS (Yellow), DEV (Blue), GCFCS (Red), OHU (Light Blue)

**Heartland for Children - DCF Circuit 10  
Caseload Census By CMO  
Weekly data as of 08-25-14**

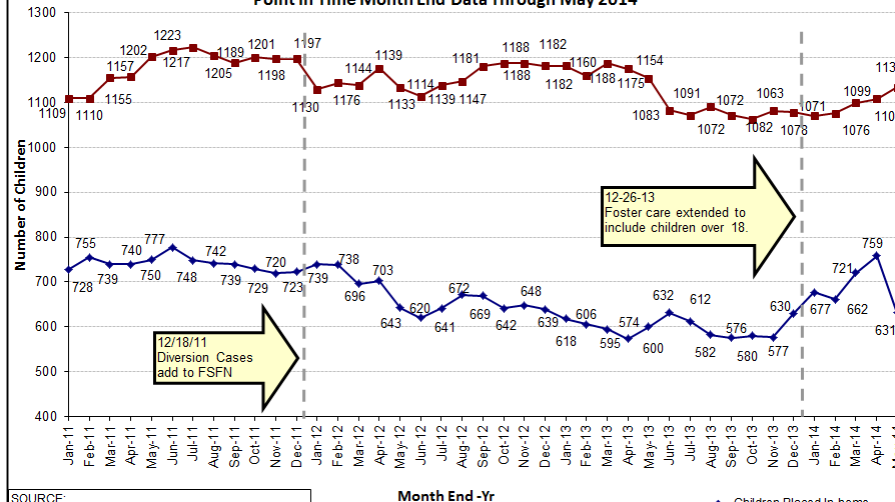


SOURCE:  
WHO: D. Curtis  
WHAT: FSN CARS Report  
WHEN: Aug. 25th, 2014

Week Ended

Legend: CHS (Blue), DEV (Green), GCFCS (Orange), OHU (Black)

**Department of Children and Families - Circuit 10  
Number of Children Active as Case Dependents  
Point in Time Month End Data Through May 2014**



SOURCE:  
WHO: A. Gribble  
WHAT: FSN Children Active Receiving Services  
WHEN: June 8, 2014

Month End -Yr

Legend: Children Placed In-home (Blue), Children Placed in OHC (Red)

**Caseload Census by Case Management Organization**  
Data as of 08-17-14

Caseload of 1-5 Children		
CMO	Case Workers	# Children
CHS	Byrd, Courtney	5
GCJFCS	Ramsey, Barbara	5
OHU	Faulk, Maia	5
OHU	Rodriguez, Julie	5
CHS	Raines, Todd	4
GCJFCS	Williams, Tamira	3
DEV	Jessie, Helen	2
DEV	Rockey, Dawn	2

Caseload of 6-15 Children		
CMO	Case Workers	# Children
CHS	Hamilton, Shannon	15
GCJFCS	Perry, Lakezia	15
GCJFCS	Smith, William	15
OHU	Beam, Christina	15
OHU	Ridgeway, Kimberly	15
OHU	Werley, Gail	15
GCJFCS	Clark, Gregory	14
GCJFCS	Fritz, Elyse	14
GCJFCS	Kelly, Latoya	14
GCJFCS	Quinto, Amanda	14
GCJFCS	Phillips, Melissa	14
OHU	Whaley, Kathleen	14
OHU	Rodriguez, Lia	14
CHS	Parrish, Elizabeth	13
CHS	Huggins, Ebonye	13
GCJFCS	Geise, Samantha	13
GCJFCS	Gallagher, Helen	13
CHS	Sanks, Melanie	12
GCJFCS	Hays, Brenda	12
GCJFCS	Perretta, Sheila	12
GCJFCS	Mcintosh, Whitney	12
CHS	Chapman, Ashley	11
GCJFCS	Coleman, Christopher	11
GCJFCS	Edwards, Sara	11
GCJFCS	Keys, Alyssia	11
OHU	Cruz-Morgan, Maria	11
OHU	Kinchen, Lisa	11
DEV	Hamilton, Shuntia	10
CHS	Washington, Chastity	9
DEV	Mckinney, Tracy	9
GCJFCS	Hopkins, Darien	9
GCJFCS	Cheshire, Christina	9
OHU	Baker-Guerin, Nancy	9
DEV	Whitaker, Christy	8
OHU	Black, Melissa	8
DEV	Young, Vanessa	7
DEV	Galvis, Katherine	7
CHS	Rivera, Sylvia	6
OHU	Land, Amanda	6
OHU	Newton, Kimberly	6

Caseload of 16-24 Children		
CMO	Case Workers	# Children
CHS	Rosario, Christopher	24
DEV	Tarver, Jillisa	24
CHS	Lennox, Marissa	23
DEV	Davis, Jennifer	23
DEV	Saintfort, Rachel	23
GCJFCS	Sangster, Kathleen	23
OHU	Frazier, Ernestine	23
CHS	Butler, Haveria	22
CHS	Castellanete, Christopher	22
CHS	Olsen, Tiffany	22
GCJFCS	Brathwaite, Lakesha	22
OHU	Cook, Daniel	22
CHS	Coofs, Elizabeth	21
CHS	Willis, Tabyron	21
DEV	Gadson, Berlendah	21
DEV	Jones, Dane	21
DEV	Porter, Ineisha	21
DEV	Woodard, Marquita	21
GCJFCS	Brown, Kamara	21
OHU	Wright, Monica	21
CHS	Williams, Lakeisha	20
CHS	Alexander, Bethany	19
CHS	Dankowski, Jennifer	19
DEV	Gervais, Gabriel	19
GCJFCS	Glasgow, Desiree	19
DEV	Parker, Ashananese	18
DEV	Rubio, Wendy	18
GCJFCS	Cintron, Jessica	18
GCJFCS	Taylor, Danni	18
OHU	Mattison-Reid, Sharon	18
OHU	Mixon, Sherie	18
GCJFCS	Gorman, Felton	16
OHU	Thomas, Lashondra	16

Caseload of 25+ Children		
CMO	Case Workers	# Children
GCJFCS	Ambakisye, Kamau	42
GCJFCS	Callier, Melissa	40
OHU	Gonzalez, Jesus	29
DEV	Lamb, Trieste	28
OHU	Howard, Arlina	28
OHU	Seright, Breanna	28
CHS	Glover, Graneshia	27
CHS	Rexford, Kristin	27
DEV	Boykins, Timothy	27
DEV	Cardillo, Meghan	27
CHS	Gilmore, Melissa	26
DEV	Gilberry, Yolanda	26
DEV	Parker, Christopher	26
GCJFCS	Marbley, Chiquila	26
CHS	Joiner, Kyle	25
CHS	Malvo, Donahue	25
CHS	Matteo, Sylvia	25
DEV	Ducking, Candace	25
DEV	Novembre, Eugenie	25



**Case Manager Caseload - Breakdown by Agency**  
Data as of 08-25-14

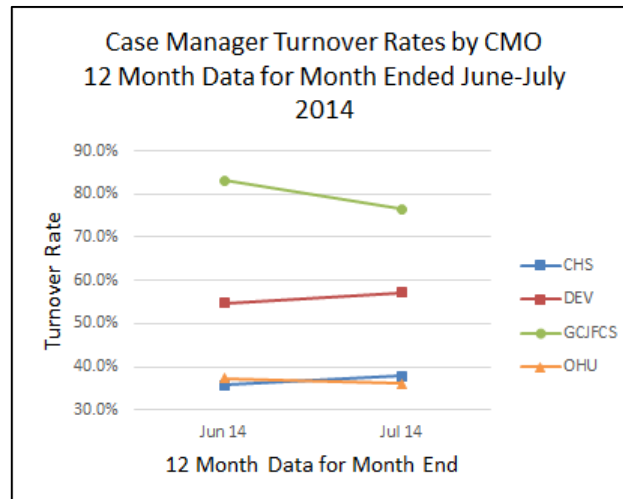
CMO	Count of Case Managers With Caseload Range					Total Case Managers	CMO	# Children Receiving Services	Avg # of Children per CM
	1-5 Children in Caseload	6-15 Children in Caseload	16-24 Children in Caseload	25+ Children in Caseload					
CHS	4	7	8	7		26	CHS	454	17.5
DEV	3	5	10	7		25	DEV	441	17.6
GCJFCS	2	17	7	3		29	GCJFCS	454	15.7
OHU	2	10	7	3		22	OHU	335	15.2
<b># of Case Managers</b>	11	39	32	20		102	<b>HFC</b>	<b>1684</b>	<b>16.5</b>

**Percent of Case Managers That Are at or Under the National Caseload Caseload Standard of 15**  
Data as of 08-25-14

CMO	# Case Managers	Data as of 08-25-14	Percent at 15 or lower
CHS	26	11	42.3%
DEV	25	8	32.0%
GCJFCS	29	19	65.5%
OHU	22	12	54.5%
HFC	102	50	49.0%

**Employee Turnover Rates By CMO**  
12 Month Data for Month Ended July, 2014

CMO	Case Manager	Case Manager Supervisor
CHS	37.8%	15.4%
DEV	57.1%	14.3%
GCJFCS	76.5%	42.9%
OHU	36.1%	60.0%





# Performance Measure: Monthly Birth Parent Contacts

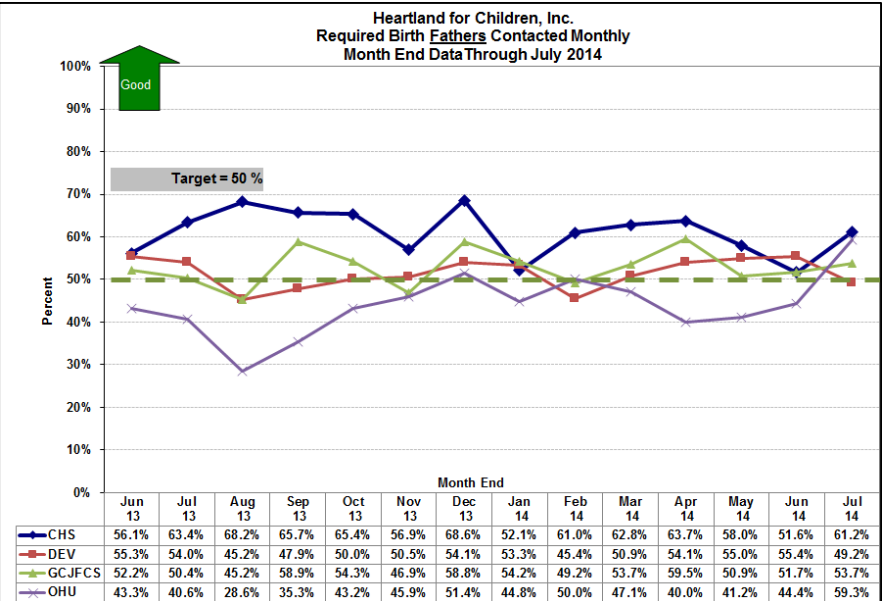
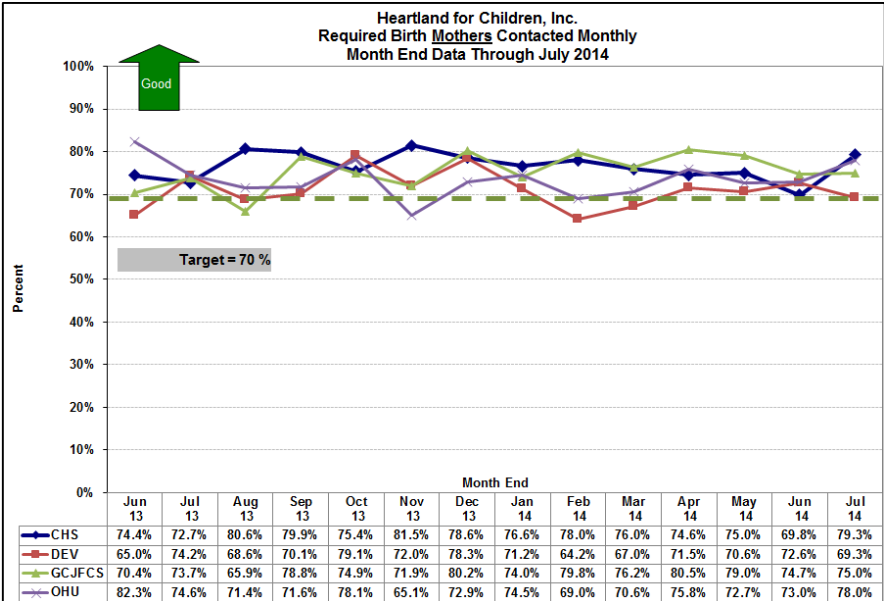
Target = 70% Mothers and 50% Fathers - seen monthly

July 2014							
AGENCY	# Moms Req	# Moms Completed	Mom % Completed	# Dads Req	# Dads Completed	Dad % Completed	Combined Average
CHS	174	138	79.3%	98	60	61.2%	70.3%
DEV	189	131	69.3%	118	58	49.2%	59.2%
GCCC	188	141	75.0%	123	66	53.7%	64.3%
OHU	41	32	78.0%	27	16	59.3%	68.7%
Grand Total	592	442	74.7%	366	200	54.6%	64.7%

Source: FSFN Report - "Worker Contacts with Birth Parents Listing by Agency"

Birth Parent Contacts made in the month of August 2014 by CMO		
FSFN Data as of 08-25-14		
AGENCY	Mom % Completed	Dad % Completed
DEV	56.02%	28.45%
CHS	57.54%	20.19%
OHU	55.88%	62.50%
GCJFCS	63.07%	40.35%
HFC	58.62%	32.12%

Green = 70% or higher Mom / 50% or higher Dad



Supplemental Information

Performance Measure: Health Information in FSFN for Children in OHC

Health Information in FSFN for Children in OHC on 07/31/2014						
Lead Agency	Children in OHC	Medical / Mental Health Record in FSFN	Medical Service in the Last 12 Months	Dental Service in the Last 6 Months	Immunizations up to date	Overall Measure
Eckerd Community Alternatives Inc	1623	100.0%	99.2%	97.0%	99.3%	98.5%
Safe Children Coalition	684	100.0%	99.7%	95.4%	100.0%	98.4%
Eckerd Community Hillsborough	1686	100.0%	99.1%	95.2%	99.4%	97.9%
Family Support Services	807	99.9%	98.1%	95.6%	99.4%	97.7%
CBC of Central Florida	1158	99.9%	97.1%	97.5%	98.3%	97.6%
CBC of Central Florida (Seminole)	296	100.0%	97.3%	97.5%	97.6%	97.5%
Kids Central, Inc.	963	99.8%	96.1%	97.1%	98.6%	97.3%
ChildNet Inc	1907	99.6%	97.5%	92.8%	98.6%	96.3%
Families First Network	1039	99.7%	96.5%	93.6%	97.8%	96.0%
Devereux CBC	672	100.0%	96.0%	92.2%	98.2%	95.5%
Heartland for Children, Inc	982	99.4%	95.8%	92.1%	98.2%	95.4%
Kids First of Florida Inc.	181	99.4%	95.6%	90.8%	99.4%	95.3%
ChildNet Palm Beach	1105	100.0%	96.0%	91.0%	98.6%	95.2%
Big Bend CBC	703	100.0%	93.8%	91.4%	99.0%	94.7%
Childrens Network of SW Florida	1136	100.0%	96.3%	89.6%	98.2%	94.7%
Family Integrity Program	87	98.9%	89.7%	93.9%	95.3%	93.0%
Partnership for Strong Families	634	99.7%	92.7%	86.7%	93.4%	90.9%
Community Partnership for Children	636	100.0%	91.7%	78.7%	98.9%	89.8%
Brevard Family Partnership	508	98.0%	88.6%	85.0%	92.5%	88.7%
Our Kids Inc	2075	99.9%	86.0%	77.0%	90.1%	84.4%
<b>Statewide</b>	<b>18882</b>	<b>99.8%</b>	<b>95.4%</b>	<b>91.2%</b>	<b>97.4%</b>	<b>94.7%</b>
<b>HFC Rank per Category</b>			<b>13th</b>	<b>12th</b>	<b>13th</b>	<b>11th</b>

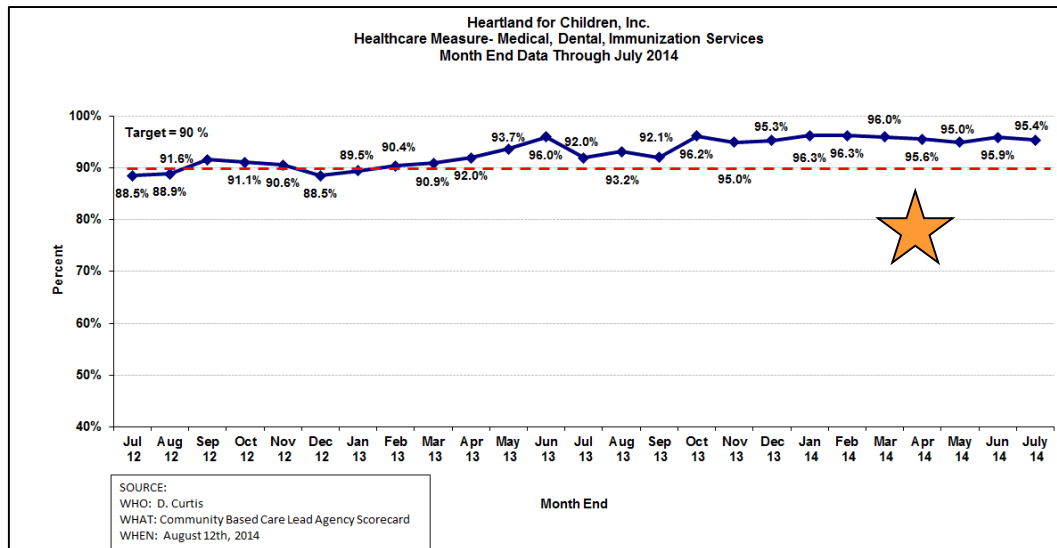
Heartland for Children, Inc. Health Information in FSFN for Children in OHC as of 08-24-14						
Agency	# of Children in OHC	% With a Medical Record in FSFN	% With Medical Service in last 12 Months	% With Dental Service in Last 7 months	% with Immunizations Up to Date	Overall Performance
CHS	305	98.0%	94.1%	85.5%	98.7%	92.8%
DEV	297	100.0%	91.9%	87.8%	92.6%	90.8%
GCCC	288	100.0%	92.4%	90.6%	100.0%	94.3%
OHU	105	100.0%	96.2%	91.2%	95.2%	94.2%
<b>HFC</b>	<b>995</b>	<b>99.4%</b>	<b>93.2%</b>	<b>88.3%</b>	<b>96.9%</b>	<b>92.8%</b>

Source: FSFN report "Healthcare Service Information for Children in Out-of-home Care - Daily

Health Information in FSFN as of 08-24-14				
Agency	# of Missing Medical Records	# of Medical Appointments Needing Update	# of Dental Appointments Needing Update	# of Immunization Needing Update
CHS	6	18	27	4
DEV	0	24	23	22
GCCC	0	22	18	0
OHU	0	4	5	5
<b>Total</b>	<b>6</b>	<b>68</b>	<b>73</b>	<b>31</b>

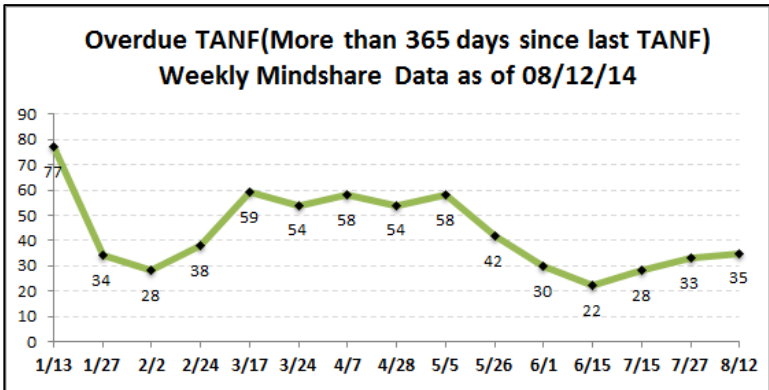
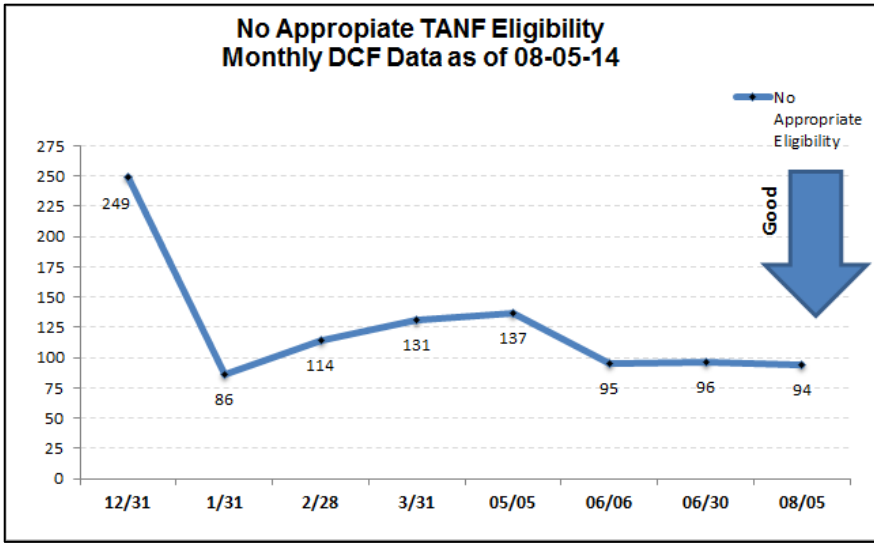
Source: FSFN report "Healthcare Service Information for Children

Supplemental Information

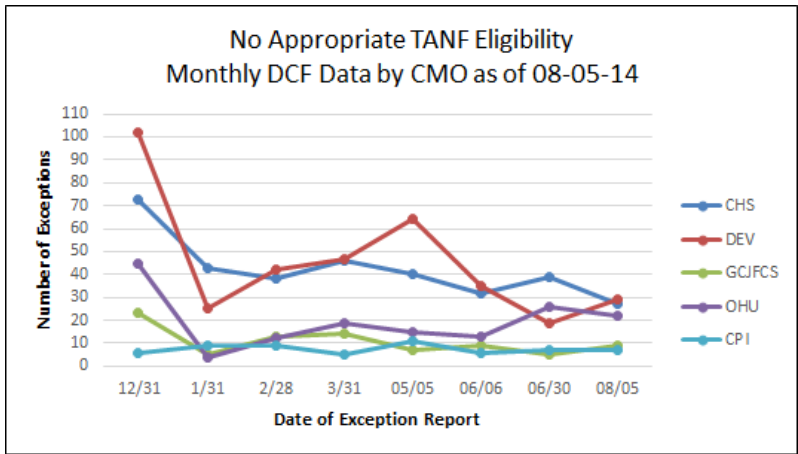


# Data Exceptions: Overdue TANF and Placement Exceptions

Agency	365 days or more since last TANF (Overdue)	No Appropriate Eligibility	Total
CHS	16	27	43
DEV	14	29	43
GCJFCS	2	9	11
OHU	3	22	25
CPI		7	7
<b>Total</b>	<b>35</b>	<b>94</b>	<b>129</b>
<b>Source:</b>	<b>Mindshare Dashboard "M32 TANF Due"</b>	<b>DCF Web Portal monthly report "CBC Client Eligibility List Rpt"</b>	
<b>Frequency</b>	Daily	Monthly	
<b>Data as of date:</b>	08/12/14	08/05/14	



Placement Exceptions Totaled By Agency Last 6 Reporting Periods						
Agency	7/22/2014	7/28/2014	8/4/2014	8/11/2014	8/17/2014	8/24/2014
CPI	2	12	3	5	7	10
CHS	2	2	11	7	3	0
DEV	8	8	9	10	10	3
GCJFCS	2	1	11	0	1	0
GCCC FIT	0	0	2	5	0	0
OHU	2	2	1	2	0	0
HFC Prevention	0	0	1	0	0	0
HFC-Data Serv. / Rev Max	0	0	1	0	0	0
<b>District Total</b>	<b>16</b>	<b>25</b>	<b>39</b>	<b>29</b>	<b>21</b>	<b>13</b>

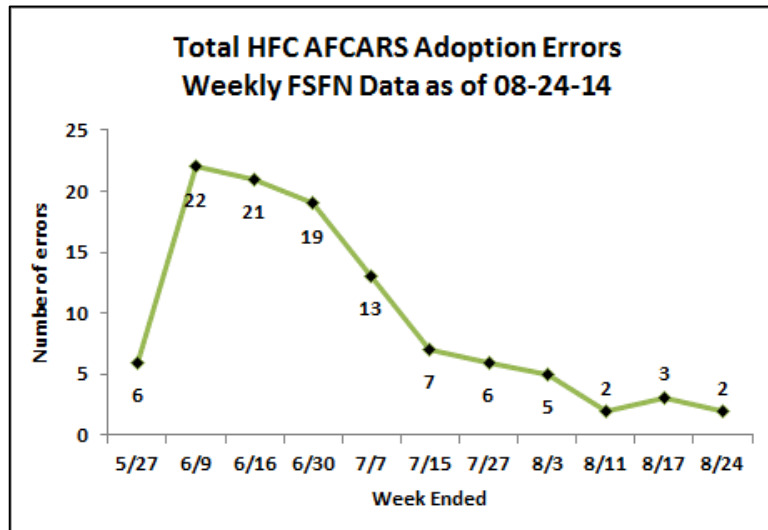
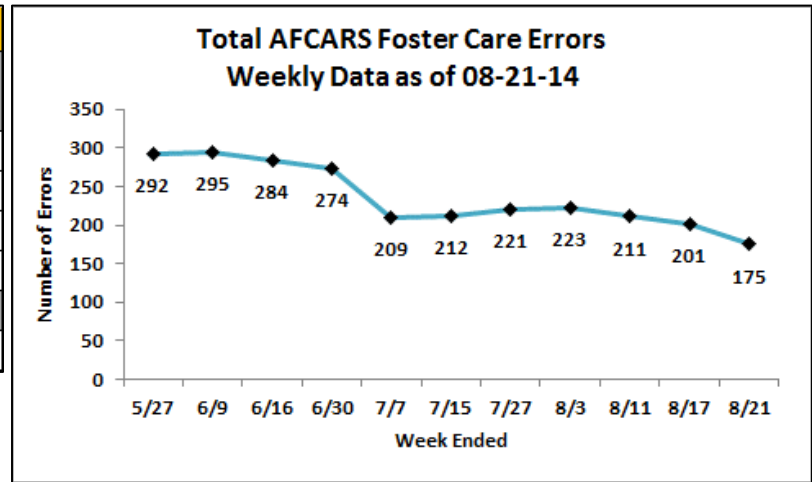


Supplemental Information

Data Exceptions: AFCARS Data for Current Report Period - 4/1/14 – 9/30/14

AFCARS Foster Care Report						
Agency	Person	Mother Married	Provider	Legal	Misc	Total
CHS	2	6	2	27	13	50
DEV	10	12	12	28	19	81
GCJFCS	3	0	1	14	10	28
OHU	2	0	7	6	1	16
<b>Total</b>	<b>17</b>	<b>18</b>	<b>22</b>	<b>75</b>	<b>43</b>	<b>175</b>

Source : FSFN Data as of 8/21/14 @ 7:00 PM



AFCARS Adoption Errors					
Agency	Adoption Module	Person Management	Provider	Legal	Total
CHS	0	0	0	0	0
DEV	0	0	0	0	0
GCJFCS	1	1	0	0	2
OHU	0	0	0	0	0
<b>Total</b>	<b>1</b>	<b>1</b>	<b>0</b>	<b>0</b>	<b>2</b>

Source : FSFN Data as of 8/24/14 @ 7:00 PM

# RESOURCE NEWS FLASH... August 27<sup>th</sup>, 2014

## After School Resources

**S.T.E.A.M. Team** – Kids (K-5<sup>th</sup> grade) spend their afternoons at Camp Fire USA (2600 Buckingham Ave., Lakeland) exploring the world around them through **S.T.E.A.M.** (science, technology, engineering, arts, math) based programming. Hands-on activities and outcome-based curriculum are designed to help elementary youth succeed in school and develop critical thinking and goal setting skills in a fun and welcoming environment. The cost is \$65 per child per week plus the membership fee. Call Rhonda Moyer at 863-688-5491 for more information.

**Two Businesses – One Great Program!** – Some children are sport-active and some like to dance. An after school program in Downtown Lakeland will offer both. A child can pick from various martial arts taught by Wing Chun Martial Arts Studio OR various dance styles offered by Just Dance Studio. Classes are taught by certified instructors; pick up and drop off is available; and Polk County teachers are on staff to assist with homework. The program is located at 116 E. Pine Street. For more details, call 863-800-0171.

## Youth Activity Resources

**Safe Boating Class** – The Lakeland Sail and Power Squadron will conduct America's Boating Course in one day on September 21<sup>st</sup>. Class will be held from 8:30am-5:00pm at the Old Salt Marine (1916 US Hwy 98 N, Lakeland). The cost is \$37 and includes material. For details, call 863-667-9047 or visit [www.lakelandsailandpower.info](http://www.lakelandsailandpower.info).

## Mental Health Resources

**New on the NCTSN Website** – The Terrorism and Disaster Center at the University of Missouri, a partner of the National Child Traumatic Stress Network, has added to their website new resources to help youth cope with media coverage including [Helping Your Child Cope with Media Coverage of Disasters: A Factsheet for Parents](http://tdc.missouri.edu/doc/products/disaster_media_factsheet_for_parents.pdf) (go to [http://tdc.missouri.edu/doc/products/disaster\\_media\\_factsheet\\_for\\_parents.pdf](http://tdc.missouri.edu/doc/products/disaster_media_factsheet_for_parents.pdf)).

**Cheerleading Team** – The Xplosion All-Stars Special Needs Cheerleading Team will be having an

## Youth Sports

information meeting on September 5<sup>th</sup> at 6:30pm at Moore's Gymnastics Academy (4767 Drane Field Rd., Lakeland). The team is open to both male and female participants starting at age 4. For more info, call Michelle Moore at 863-440-2266.

**Bartow Soccer Club** – The Fall season begins in September – register now for boys and girls ages 4 to 18. All games will take place on Saturdays at the Bartow Soccer Fields (Mary Holland Park). For more info, visit <http://www.eteamz.com/bartowsoccer/> or call 863-440-2266.

**Youth Baseball** – Lakeland City Baseball's online registration for the Fall 2014 season is now open for players ages 4 through 15 including LCB Buddy Ball for children with disabilities. Visit [www.lakelandcitybaseball.com](http://www.lakelandcitybaseball.com) and click on "online registration." Buddy Ball is free and t-ball players receive a special registration discount! Pre-season practices will begin September 2<sup>nd</sup>.

**Winter Haven Youth Soccer** - Register now through the end of August. The season begins on September 13<sup>th</sup> at Simmers-Young Park (339 American Spirit Rd.) To register, go to <https://www.gotsport.com/asp/application/reg/?PogramID=14183&Type=PLAYER>. For more info, go to [www.whysa.com](http://www.whysa.com).

**Bartow Mighty Mites** for boys ages 8 to 11. Register now through mid-September; Games and practices are Tuesday and Thursdays from 4:30pm to 6:30pm at Mosaic Park. For more info, call Bartow Parks and Recreation at 863-534-0120

**Lakeland Soccer Club** for boys and girls ages 4 to 18. Register now – games are September through December with home games at Lake Parker. For more info, call 863-683-6650.

## Community Events

**Family Fun Night** – Polk County Parks and Recreation presents this free event on September 6<sup>th</sup> from 6:00-9:00pm at the Wabash Community Center (1230 Southern Ave., Lakeland). Come out to enjoy games, snacks, and the movie, "Muppets Most Wanted." For more info, call 863-284-4223.

**2014 Hispanic Heritage Festival** – Polk County Parks and Recreation presents this free event celebrating community and culture through music, art, and food. The festival will be held on September 27<sup>th</sup> from 12:00-4:00pm at the Eloise Resource Center (710 Snively Ave., Winter Haven). For more info, call 863-298-4485.

## Back to School Events/Resources

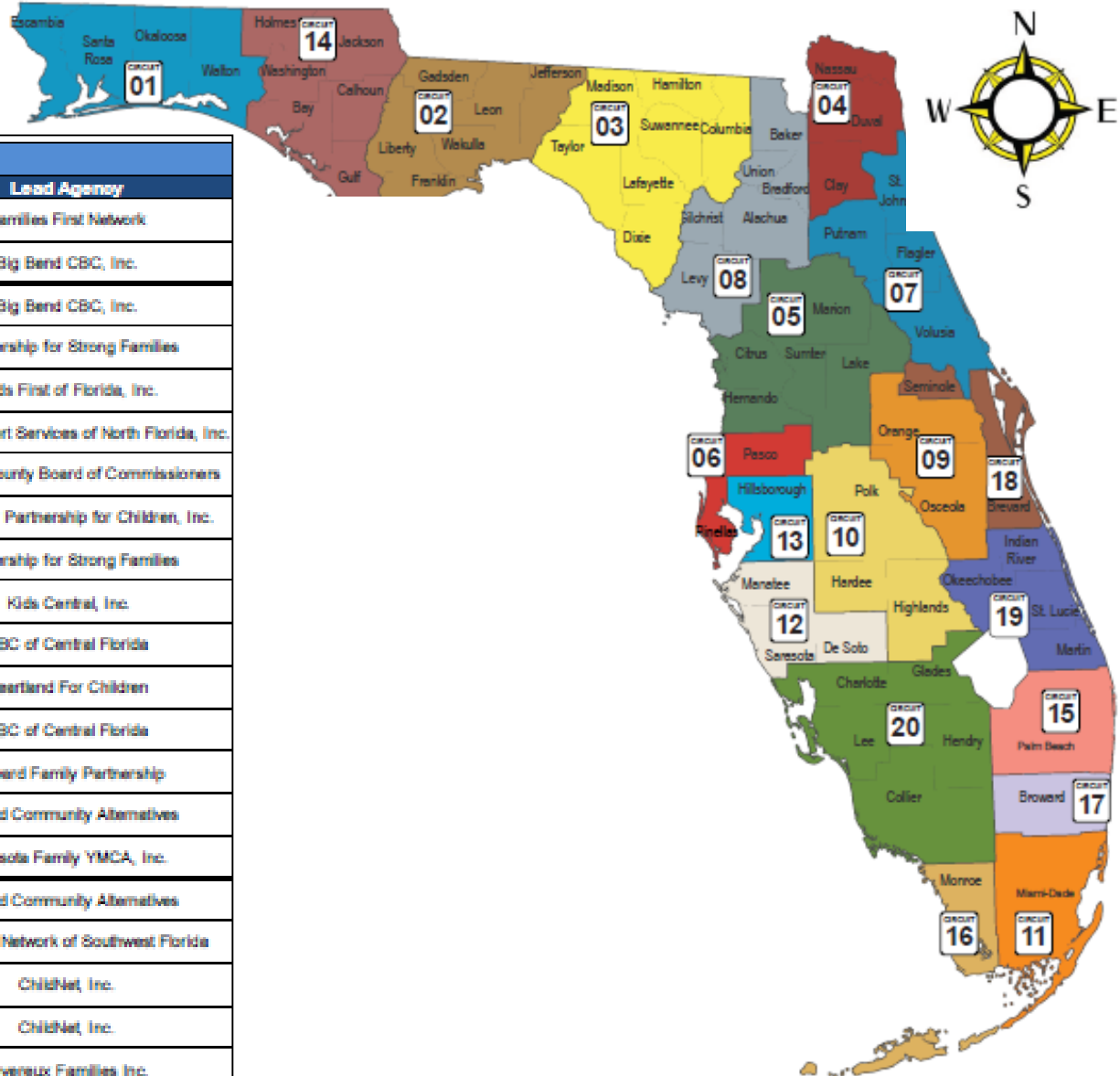
**Back to School Pool Bash** – The Pool Bash will be held on August 30<sup>th</sup> from 1:00-4:00pm at the Winter Haven Recreational and Cultural Center (801 Avenue T N.E.). Looking for an opportunity to relax, hang out with friends and enjoy a day of planned activities as the summer comes to a close? Come to the Bash and enjoy a bounce house, water slide, music, water safety tips and refreshments.



Community Based Care: Hardee, Highlands & Polk Counties



# Community Based Care Lead Agency Map



LEGEND			
Circuit	Region	Counties	Lead Agency
1		Escambia, Okaloosa, Santa Rosa, Walton	Families First Network
2	Northwest	Franklin, Gadsden, Jefferson, Leon, Liberty, Wakulla	Big Bend CBC, Inc.
14		Bay, Calhoun, Gulf, Holmes, Jackson, Washington	Big Bend CBC, Inc.
3		Columbia, Dixie, Hamilton, Lafayette, Madison, Suwannee, Taylor	Partnership for Strong Families
4		Clay	Kids First of Florida, Inc.
4	Northeast	Duval, Nassau	Family Support Services of North Florida, Inc.
7		St. Johns	St. Johns County Board of Commissioners
7		Flagler, Putnam, Volusia	Community Partnership for Children, Inc.
8		Alachua, Baker, Bradford, Gilchrist, Levy, Union	Partnership for Strong Families
5		Citrus, Hernando, Lake, Marion, Sumter	Kids Central, Inc.
9		Orange, Osceola	CBC of Central Florida
10	Central	Hardee, Highlands, Polk	Heartland For Children
18		Seminole	CBC of Central Florida
18		Brevard	Brevard Family Partnership
6		Pasco, Pinellas	Eckard Community Alternatives
12	SunCoast	DeSoto, Manatee, Sarasota	Sarasota Family YMCA, Inc.
13		Hillsborough	Eckard Community Alternatives
20		Charlotte, Collier, Glades, Hendry, Lee	Children's Network of Southwest Florida
15		Palm Beach	ChildNet, Inc.
17	Southeast	Broward	ChildNet, Inc.
19		Indian River, Martin, Okeechobee, St. Lucie	Devereux Families Inc.
11	Southern	Miami-Dade	Our Kids of Miami-Dade/Monroe, Inc.
16		Monroe	Our Kids of Miami-Dade/Monroe, Inc.