



Community Based Care: Hardee, Highlands & Polk Counties

CBC Performance and Quality Improvement Meeting
Scheduled for Wednesday, April 26, 2017 at 10 a.m.

Data for Week Ended
Sunday, April 23, 2017

Conference Call: 866-946-1739
Participant Number: 7936917#



Community Based Care Lead Agency Scorecard

For the Quarter of January 01, 2017 to March 31, 2017

CBC Lead Agency Scorecard Performance Table	Safety				Permanency				Well-Being			
Measures	1. Rate of Abuse per day while in foster care.	2. Percent of children who are not neglected or abused during in-home services.	3. Children who are not neglected or abused after receiving services.	4. Children under supervision who are seen every 30 days.	5. Children exiting foster care to a permanent home within 12 months of entering care.	6. Children achieving permanency in 12 months for children in foster care 12 to 23 months.	7. Children who do not re-enter foster care within 12 months of moving to a permanent home.	8. Children's placement moves per 1,000 days in foster care.	9. Children in out-of-home care who have received medical services in the last 12 months.	10. Children in out-of-home care who received dental services within the last 7 months.	11. Young adults in foster care at age 18 that have completed of are enrolled in secondary education.	12. Children placed with all of their siblings who are also under court jurisdiction.
Standard	8.5	95.0%	95.0%	99.5%	40.5%	43.6%	91.7%	4.12	95.0%	95.0%	80.0%	65.0%
Reporting Period	02/01/16 - 01/31/17	11/01/16 - 01/31/17	05/01/16 - 07/31/16	01/01/17 - 03/31/17	01/01/16 - 03/31/16	4/1/2016	01/01/15 - 03/31/15	04/01/16 - 03/31/17	12/31/2016	12/31/2016	04/01/16 - 03/31/17	3/31/2017
Big Bend CBC (Circuit 2 & 14)	9.13	97.0%	96.4%	99.8%	38.6%	52.0%	91.8%	3.64	99.1%	95.8%	78.7%	68.6%
Brevard Family Partnership	14.86	98.3%	92.5%	99.8%	35.8%	45.5%	91.0%	3.66	96.8%	93.8%	86.2%	69.6%
ChildNet Inc	10.55	96.3%	95.6%	99.9%	33.8%	54.6%	88.2%	3.36	96.8%	95.9%	89.6%	56.8%
ChildNet Palm Beach	12.67	99.8%	94.7%	99.9%	49.4%	55.8%	92.8%	3.62	97.9%	93.4%	91.1%	57.7%
Children's Network of SW Florida	22.58	98.0%	93.6%	99.7%	42.0%	48.9%	91.3%	6.21	93.8%	89.6%	87.7%	61.7%
Community Based Care (Cir #9)	10.78	97.5%	95.6%	99.7%	46.7%	55.9%	93.9%	4.13	96.6%	93.1%	85.0%	63.7%
Community Based Care (Cir #18)	10.84	95.6%	100.0%	99.9%	31.9%	62.0%	86.2%	3.41	94.6%	90.9%	75.0%	63.1%
Community Partnership for Childr.	9.18	95.6%	95.3%	99.5%	33.6%	52.0%	82.6%	3.42	94.9%	80.9%	73.5%	58.9%
Devereux CBC of Okeechobee	8.82	95.9%	97.4%	99.9%	44.1%	65.7%	97.8%	4.02	98.7%	93.3%	85.0%	68.4%
Eckerd Community Alternatives	8.52	97.7%	98.0%	99.9%	47.6%	51.0%	91.0%	4.13	99.1%	95.8%	91.8%	65.5%
Eckerd Community Hillsborough	10.44	96.3%	96.7%	99.9%	42.6%	49.8%	93.3%	5.33	99.0%	97.2%	95.7%	65.2%
Families First Network	8.3	97.8%	93.0%	99.8%	33.7%	51.3%	93.3%	6.02	93.4%	84.0%	80.4%	61.5%
Family Integrity Program	8.16	96.5%	88.8%	100.0%	35.2%	54.7%	100.0%	3.13	93.4%	78.7%	75.0%	77.5%
Family Support Services North Fla	7.81	96.0%	91.9%	99.9%	44.0%	69.9%	88.0%	4.01	98.6%	96.0%	96.6%	69.6%
Heartland For Children	9.34	98.6%	95.1%	99.8%	41.6%	55.9%	91.9%	3.04	99.2%	95.8%	89.6%	63.4%
Kids Central, Inc.	10.4	97.6%	94.4%	99.7%	38.0%	47.1%	83.5%	4.07	96.9%	90.7%	83.6%	69.8%
Kids First of Florida, Inc.	12.45	96.2%	95.4%	99.9%	32.4%	55.1%	78.5%	1.67	96.3%	93.1%	100.0%	68.9%
Our Kids of Miami-Dade	8.91	99.3%	98.6%	99.5%	42.3%	53.1%	92.3%	5.38	98.0%	94.8%	87.2%	57.5%
Partnership for Strong Families	10.31	98.6%	96.8%	99.8%	52.4%	58.0%	95.0%	3.48	98.4%	92.5%	95.2%	65.5%
Sarasota Y/Safe Children Coalition	12.19	96.1%	97.8%	99.8%	47.4%	50.5%	93.5%	4.43	96.6%	76.6%	91.6%	70.9%
Statewide	10.83	97.3%	95.5%	99.8%	41.4%	53.4%	90.9%	4.33	97.2%	92.2%	87.6%	63.9%
Red Zone	8.85	92.9%	92.9%	98.9%	36.3%	39.2%	90.8%	4.54	89.9%	89.9%	69.9%	60.0%



Scorecard Measure 4 - Children Seen / Not Seen

Percent of children under supervision who are required to be seen every 30 days

Scorecard Measure #4 - Children Under Supervision Seen Who Are Seen Every Thirty Days Supervision between 04/01/17 - 04/30/17		
Agency	# of Children <u>Not</u> seen in 30 days	% of Children seen timely
CHS	20	99.62%
DEV	19	99.08%
GCJFCS	6	99.43%
OHU	1	99.97%
Total	46	99.51%
*Source: "Children Under Supervision Who Are Seen Every Thirty Days - Report #1144" Data-as-of: 04/24/17		

# of Children Not Seen, Month of April 2017	
# Not Seen	Agency
71	CHS
65	DEV
85	GCJFCS
46	OHU
6	CPI
273	Total
Source: FSFN Rpt "Children seen / not seen daily listing" Data-as-of: 4/23/17	



Scorecard Measures 5 & 6 - Children Achieving Permanency

SM 5 - Percent of children exiting care to a permanent home within 12 months of entering care – **Target = 40.4%**

SM 6 - Percent of children exiting care to a permanent home for children in care 12-23 months – **Target = 43.7%**

Reunifications Entered into FSFN: Week of 04/17/17 thru 04/23/17			
Agency	Timely	Un-Timely	Total
CHS		8	8
DEV		1	1
GCJFCS		6	6
OHU	2		2
Total	2	15	17

Scorecard Measure #5 - 04/01/16 to 06/30/16 Children Achieving Permanency within 0 - 12 Mths FY 16-17 - 4th Qtr as of 04/23/17			
Agency	Permanency within 12 mths	Total Children out-of-home care	Percent Timely Reunification
CHS	26	56	46.4%
DEV	14	39	35.9%
GCJFCS	23	62	37.1%
OHU	7	33	21.2%
Total	70	190	36.8%

Scorecard Measure #6 - 07/01/16 to 06/30/17 Children Achieving Permanency within 12 - 24 Mths FY 16-17 - 4th Qtr as of 04/23/17			
Agency	Permanency within 12-24 mths	Total Children LOS 12-24 mths	Percent Timely Reunification
CHS	34	82	41.5%
DEV	26	73	35.6%
GCJFCS	36	66	54.5%
OHU	27	43	62.8%
HFC	123	264	46.6%

Green = Meeting Measure, Yellow = 10% Below Measure, Red = More Than 10% Below Measure



Children Returning to Care

Number of Children in a Removal Episode Who Have Had a Prior Removal

FY 16-17 Children Returning to Care					
April Removals as of 04/23/17					
Agency	Length of Reunification				Total
	< 1 yr	1 - 2 yrs	3 - 5 yrs	5 yrs +	
CHS		1			1
DEV					0
GCJFCS	2	1			3
OHU				2	2
Total	2	2	0	2	6

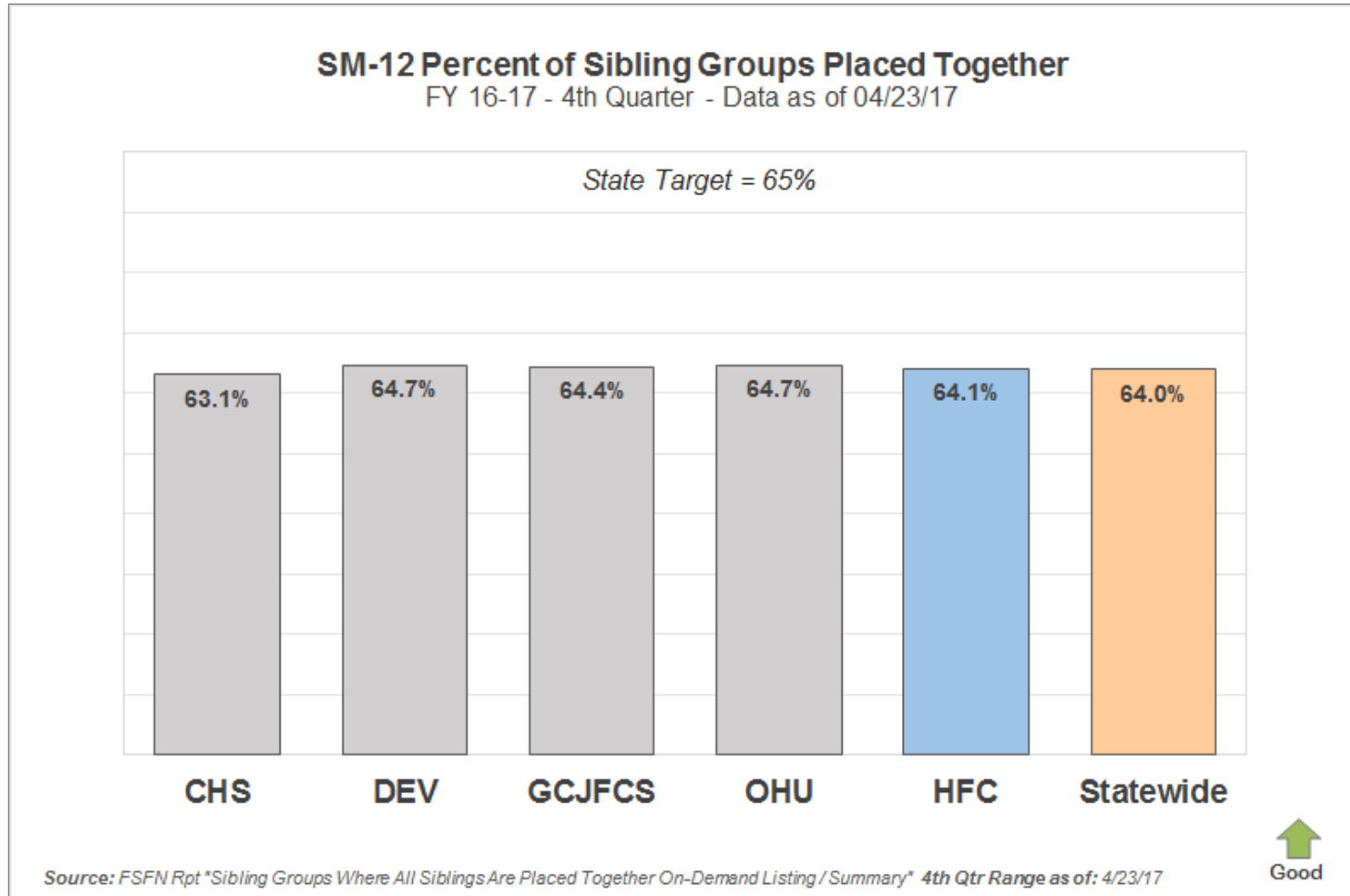
Removal Episodes for Children with a Prior Removal								
Removals entered into FSFN between 04/17/17 - 04/23/17								
Current Removal Date	Prior Unit	Prior Removal	Prior Discharge	Length of Stay (months)	Length from Prior Discharge (months)	LOS Range	P. Analytics Listing	P. Analytics Percent
4/5/2017	141035-GCCC	8/13/2015	4/20/2016	8	11	< 1 yr	Y	32%

Source: FSFN Data Warehouse Ad Hoc Report, Report-as-of: 04/24/17



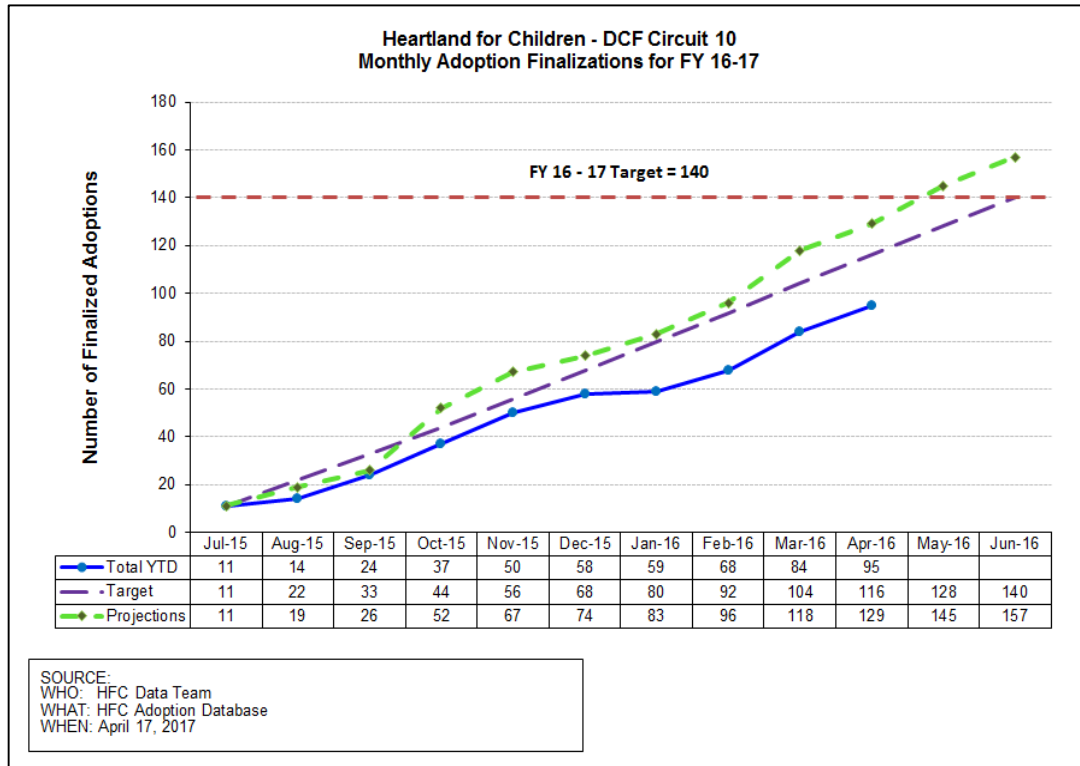
Scorecard Measure 12 – Separated Siblings

Percentage of siblings groups in out-of-home care where all siblings are placed together.



Adoption Finalizations

Percent of Adoptions Finalized with 24 Months of Removal & Percent of Adoption Goal Met



FY 16-17 Upcoming Finalization Dates

May 03, 2017

May 10, 2017

Percent of Adoptions Finalized
Within 24 Months of Removal

Target is 36.6%

TPR Database shows: 38.9%

Manually Reported Adoption Data for FY 16-17 through April 24, 2017:

Adoption Finalizations Credited to HFC Fiscal YTD 16-17																													
		Number of Adoptions Finalized																								Total			
		Jul-2016		Aug-2016		Sep-2016		Oct-2016		Nov-2016		Dec-2016		Jan-2017		Feb-2017		Mar-2017		Apr-2017		May-2017		Jun-2017		CBC Credit	% w/in 24 Mos	CMO Target	% of Target Met
CMO		Proj	Actual	Proj	Actual	Proj	Actual	Proj	Actual	Proj	Actual	Proj	Actual	Proj	Actual	Proj	Actual	Proj	Actual	Proj	Actual	Proj	Actual	Proj	Actual				
CHS		7	7	0	0	0	0	3	1	5	2	5	5	0	0	5	3	7	5	3	2	9	0	7	0	25	32.0%	44	56.8%
DEV		0	0	5	0	3	3	4	3	4	1	2	3	1	1	2	3	9	7	3	4	3	0	2	0	25	24.0%	32	78.1%
GCJFCS		4	4	2	3	2	3	4	3	3	3	0	0	4	0	4	1	4	4	4	2	4	0	3	0	23	52.2%	39	59.0%
OHU		0	0	1	0	2	4	15	6	3	7	0	0	4	0	2	2	2	0	1	3	0	0	0	0	22	50.0%	25	88.0%
Total		11	11	8	3	7	10	26	13	15	13	7	8	9	1	13	9	22	16	11	11	16	0	12	0	95	38.9%	140	67.9%
Source: HFC TPR Database																													
YTD Projections		11		19		26		52		67		74		83		96		118		129		145		157					



Foster Home Profile



Devereux
Inspiring hope. Empowering lives. For 100 years



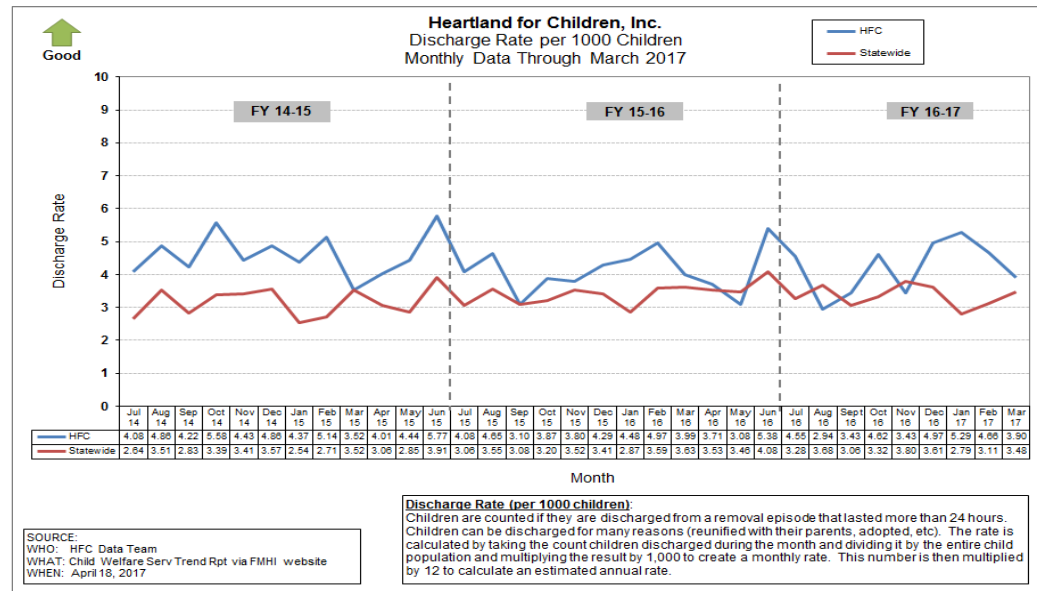
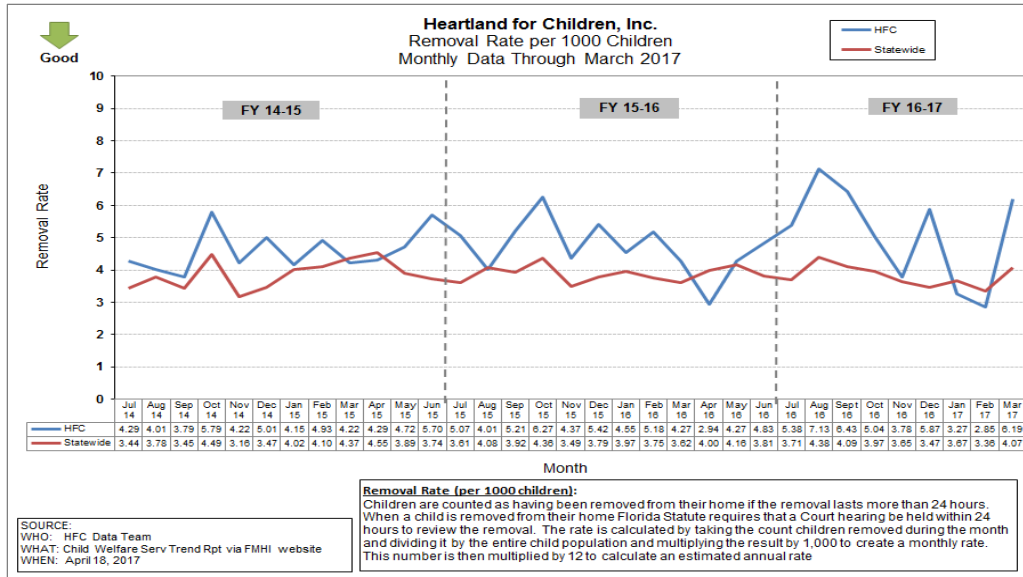
GAP

Guardians as Parents



Removal and Discharge Rates

Monthly Removal and Discharge Rates (per 1,000 Children) as of March 2017



Children's Legal Services- Shelter Report

CLS Weekly Shelter Report FY 2016-17 as of April 23, 2017

CLS WEEKLY SHELTER REPORT - FY 2016-2017													16/17
	JUL	AUG	SEP	OCT	NOV	DEC	JAN	FEB	MAR	APR	MAY	JUN	Totals
# Of Shelter Hearings													
Polk	35	47	56	44	29	48	24	19	43	27			372
Highlands	1	3	4	10	2	5	3	2	2	2			34
Hardee	3	2	1	1	1	3	1	1	2	3			18
Total	39	52	61	55	32	56	28	22	47	32			424
# Children Removed													
Polk	64	93	93	73	50	86	39	44	88	44			674
Highlands	4	10	7	9	4	9	5	4	3	4			59
Hardee	7	5	1	2	2	5	2	1	4	7			36
Total	75	108	101	84	56	100	46	49	95	55			769
Total Children Denied Shelter													
Polk	0	0	0	0	0	0	0	0	0	0			0
Highlands	0	0	0	0	0	0	0	0	0	0			0
Hardee	0	0	0	0	0	0	0	0	0	0			0
Total	0	0	0	0	0	0	0	0	0	0			0
# Children Placed with Relative													
Polk	36	59	51	41	21	66	25	31	60	27			417
Highlands	4	2	5	5	0	3	4	4	2	0			29
Hardee	1	3	0	2	2	5	2	0	2	5			22
Total	41	64	56	48	23	74	31	35	64	32			468
# Children Placed with Non Relative													
Polk	5	13	19	13	13	9	3	5	13	6			99
Highlands	0	0	2	0	4	1	1	0	1	1			10
Hardee	5	0	1	0	0	0	0	1	2	0			9
Total	10	13	22	13	17	10	4	6	16	7			118
# Children Placed in Foster Care													
Polk	23	21	23	19	16	11	11	8	15	11			158
Highlands	0	8	0	4	0	5	0	0	0	3			20
Hardee	1	2	0	0	0	0	0	0	0	2			5
Total	24	31	23	23	16	16	11	8	15	16			183

Shelter Count for the Week of April 17 - April 23, 2017

	Polk	Highlands	Hardee
Shelters	4		3
Children Removed	8		7
Placed in Foster Care	6		2
Placed w/ a Relative	2		5
Placed w/a Non-Rel			

% of Children Sheltered Placed in Foster Care							
Data as of 4/23/2017							
Month	10-11	11-12	12-13	13-14	14-15	15-16	16-17
Jul	17.0%	35.8%	32.8%	44.7%	29.5%	34.7%	32.0%
Aug	24.7%	25.6%	32.0%	24.1%	34.9%	34.0%	28.7%
Sep	30.2%	51.4%	45.3%	26.2%	63.6%	27.1%	22.8%
Oct	31.6%	39.2%	34.8%	44.3%	34.5%	29.3%	27.4%
Nov	42.9%	37.3%	40.0%	44.4%	17.4%	19.2%	28.6%
Dec	38.8%	37.8%	30.0%	30.9%	52.7%	21.3%	16.0%
Jan	34.4%	51.4%	37.8%	37.5%	26.3%	21.2%	23.9%
Feb	27.8%	27.3%	42.2%	47.6%	39.4%	17.6%	16.3%
Mar	29.8%	47.6%	36.1%	47.4%	39.0%	30.0%	15.8%
Apr	45.6%	30.6%	30.3%	43.9%	24.1%	29.7%	29.1%
May	32.0%	41.2%	27.3%	28.8%	27.5%	56.3%	
Jun	29.3%	27.2%	19.0%	31.3%	33.3%	41.0%	
FY Total	32.0%	38.0%	34.3%	37.7%	34.7%	30.1%	

CLS WEEKLY SHELTER REPORT - FY 2015-2016													15/16	14/15	13/14	12/13	11/12	10/11
	JUL	AUG	SEP	OCT	NOV	DEC	JAN	FEB	MAR	APR	MAY	JUN	Totals	Totals	Totals	Totals	Totals	
# Of Shelter Hearings																		
Polk	38	25	30	39	32	37	29	30	23	39	21		370	329	330	283	385	
Highlands	0	3	2	2	2	4	1	2	1	2	1		28	48	17	29	47	
Hardee	4	0	0	0	1	0	1	2	1	0	0		9	19	11	12	16	
Total	42	28	32	41	35	41	29	33	32	25	40	29	407	396	358	315	448	
# Children Removed																		
Polk	67	45	68	70	48	74	49	61	57	35	63	43	680	582	578	494	643	
Highlands	0	5	2	5	2	6	2	2	2	2	1	18	47	84	27	46	84	
Hardee	5	0	0	0	2	0	1	5	1	0	0	0	14	35	18	20	26	
Total	72	50	70	75	52	80	52	68	60	37	64	61	741	701	623	560	753	
Total Children Denied Shelter																		
Polk	0	0	0	0	3	0	0	0	0	0	0	0	3	0	1	8	5	
Highlands	0	0	0	0	0	0	0	0	0	0	0	0	0	1	0	0	0	
Hardee	0	0	0	0	0	0	0	0	0	0	0	0	0	0	0	0	0	
Total	0	0	0	0	3	0	0	0	0	0	0	0	3	1	1	8	5	
# Children Placed with Relative																		
Polk	35	28	44	33	29	54	26	45	29	18	21	21	383	319	296	280	357	
Highlands	0	5	1	2	1	2	2	1	2	2	0	13	31	50	24	22	40	
Hardee	4	0	0	0	2	0	1	2	1	0	0	0	10	17	13	16	15	
Total	39	33	45	35	32	56	29	48	32	20	21	34	424	386	333	318	412	
# Children Placed with Non Relative																		
Polk	8	0	5	18	10	7	12	5	10	6	7	0	88	54	52	46	39	
Highlands	0	0	1	0	0	0	0	0	0	0	0	2	3	7	1	4	14	
Hardee	0	0	0	0	0	0	0	3	0	0	0	0	3	11	4	0	2	
Total	8	0	6	18	10	7	12	8	10	6	7	2	94	72	57	50	55	
# Children Placed in Foster Care																		
Polk	24	17	19	19	9	13	11	11	18	11	35	22	209	209	230	169	247	
Highlands	0	0	0	3	1	4	0	1	0	0	1	3	13	27	2	19	30	
Hardee	1	0	0	0	0	0	0	0	0	0	0	0	1	7	3	4	9	
Total	25	17	19	22	10	17	11	12	18	11	36	25	223	243	235	192	286	

Case Transfer Staffing Data

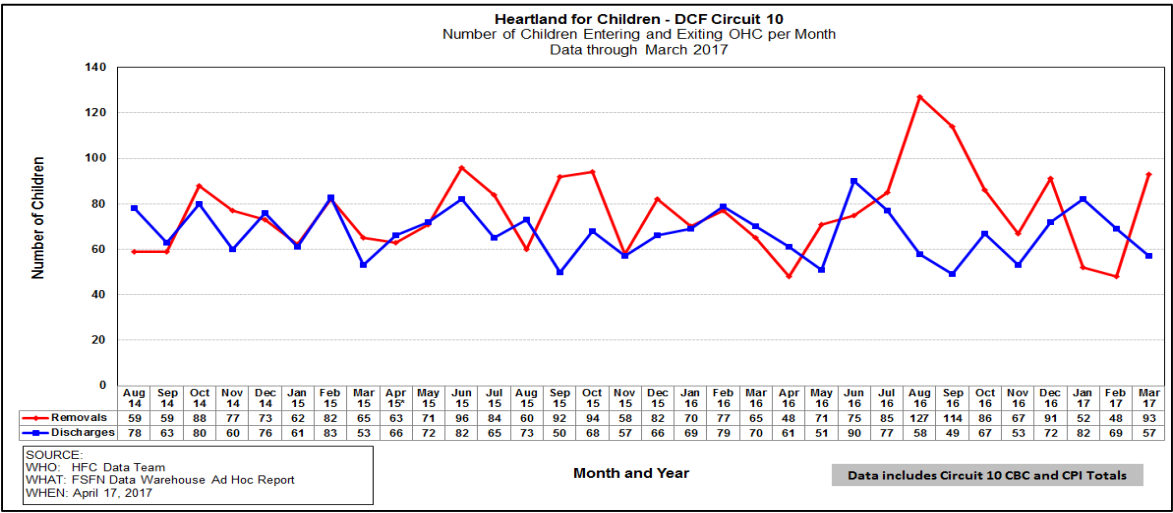
Case Transfer Data For Fiscal Year July 1, 2016 – June 30, 2017 - Data as of 04/24/2017

Agency	JUL	AUG	SEPT	OCT	NOV	DEC	JAN	FEB	MAR	APR	MAY	JUN	16-17 Totals	15-16 Totals	14-15 Totals
Number of Children															
CHS	37	49	35	54	40	24	43	23	27	17			349	391	259
Devereux	25	75	41	26	42	35	34	21	48	15			362	403	251
GCCC	31	49	49	43	35	34	40	18	31	28			358	388	253
One Hope	65	65	36	38	58	37	43	41	49	39			471	358	460
Total	158	238	161	161	175	130	160	103	155	99			1540	1540	1223
Out of Home Care															
CHS	23	24	22	39	21	9	25	11	21	13			208	230	176
Devereux	6	40	22	19	29	20	19	15	29	8			207	218	165
GCCC	15	39	24	34	22	23	20	10	19	18			224	235	175
One Hope	18	14	13	7	10	6	13	6	8	10			105	71	130
Total	62	117	81	99	82	58	77	42	77	49			744	754	646
IN - HOME JUDICIAL															
CHS	1	2	0	2	5	2	3	3	0	2			20	30	41
Devereux	2	2	0	0	3	0	2	5	2	4			20	37	23
GCCC	3	0	0	0	3	2	2	0	4	5			19	11	12
One Hope	0	2	0	1	0	0	8	1	1	7			20	8	19
Total	6	6	0	3	11	4	15	9	7	18			79	86	95

Agency	JUL	AUG	SEPT	OCT	NOV	DEC	JAN	FEB	MAR	APR	MAY	JUN	16-17 Totals	15-16 Totals	14-15 Totals
NON-JUDICIAL IN HOME SERVICES															
CHS	13	15	9	12	14	11	8	7	2	1			92	83	13
Devereux	17	22	18	5	8	9	8	1	16	0			104	82	16
GCCC	12	10	23	8	9	7	18	7	7	2			103	89	44
One Hope	14	7	8	6	10	0	0	10	0	3			58	52	23
Total	56	54	58	31	41	27	34	25	25	6			357	306	96
OCS / ICPC Courtesy Supervision															
CHS	0	0	1	0	0	0	0	0	0	0			1	28	0
Devereux	0	2	0	0	0	0	0	0	0	0			2	40	1
GCCC	0	0	1	0	0	0	0	0	0	0			1	29	0
One Hope	30	42	14	24	38	29	22	24	40	19			282	217	277
Total	30	44	16	24	38	29	22	24	40	19			286	314	278
Reinstatement of Protective Services Supervision (Notice of Hearings)															
CHS	0	5	1	0	0	0	5	2	3	0			16	7	9
Devereux	0	7	0	0	2	3	3	0	0	0			15	16	17
GCCC	1	0	1	0	1	0	0	1	0	0			4	9	14
One Hope	3	0	1	0	0	0	0	0	0	0			4	9	10
Total	4	12	3	0	3	3	8	3	3	0			39	41	50

Children Entering & Exiting Care

Number of Children Entering and Exiting Out-of-Home Care per Month

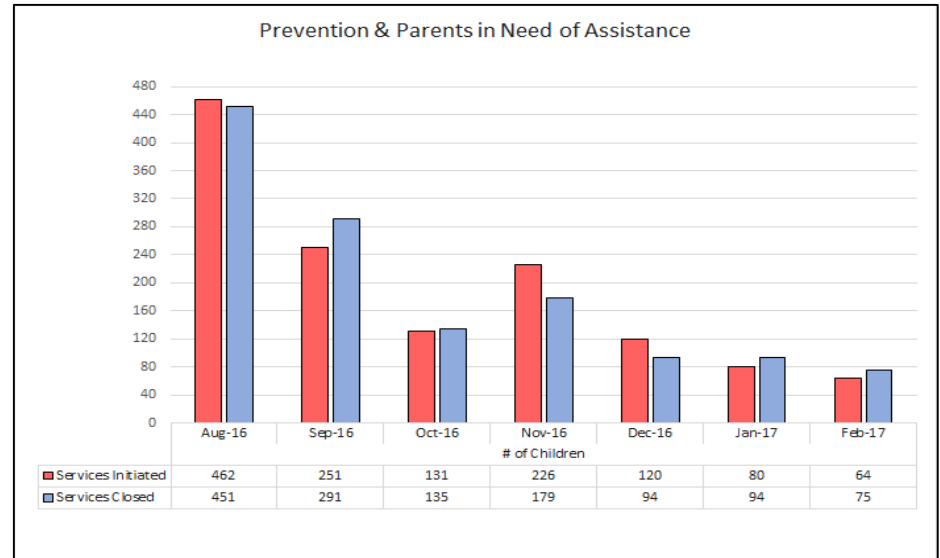
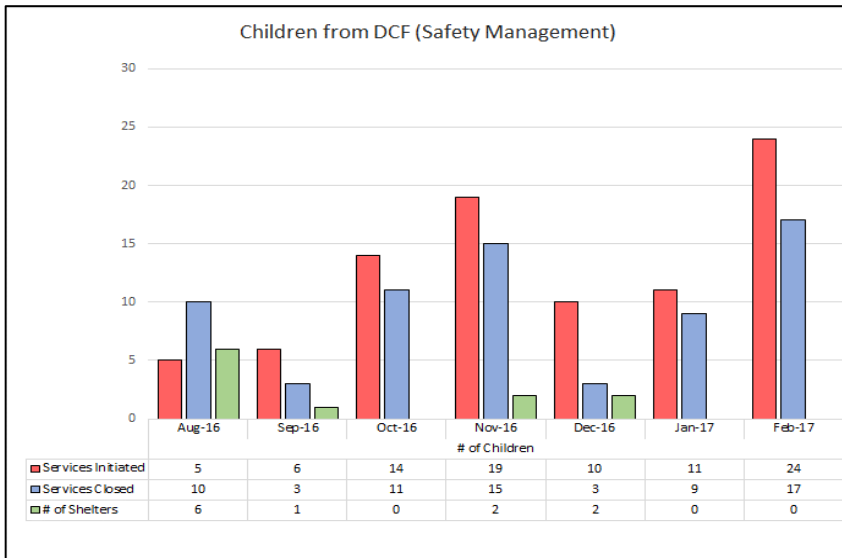
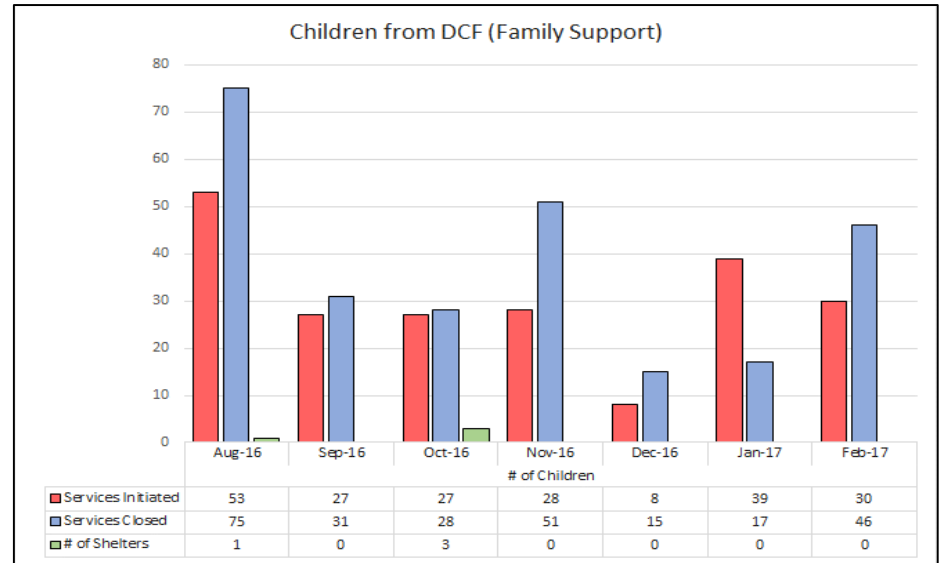




Neighbor to Family – Weekly & Monthly Census

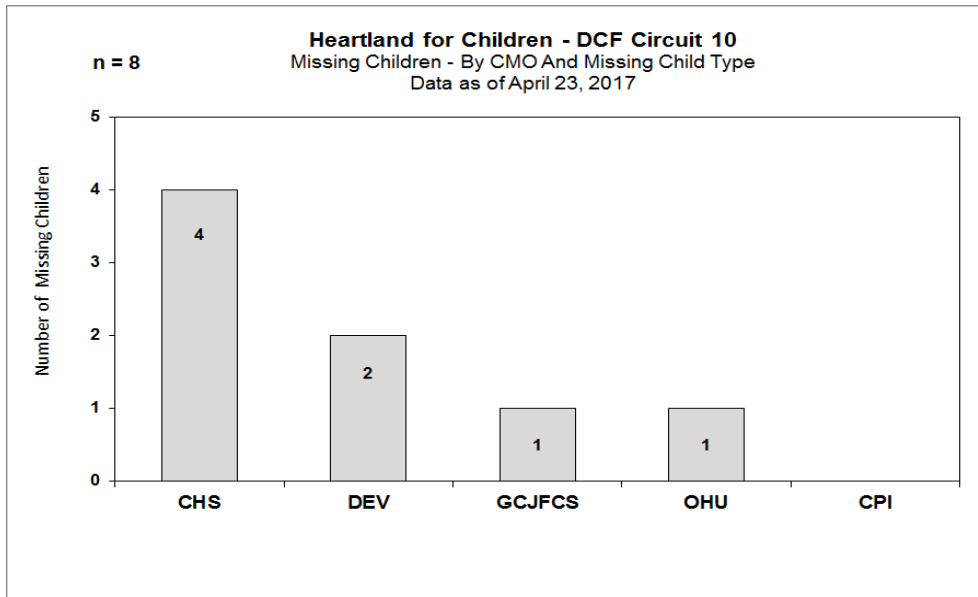
Number of Children Served, Breakdown by Referral Type

Neighbor To Family - Weekly Census Numbers						
Weekly Data 04/17/17 through 04/23/17						
Referral Type	Number of Families	Number of Children	Number Opened	Number Closed	Number Screened	Children Sheltered
CPI - Safety Management	1	3	1	0	1	0
CPI- Family Support Services	24	67	4	1	8	0
Specialized - Family Support Services	16	36	1	6	0	1
Prevention - Community Referral	21	64	6	4	-	-
Special Conditions Report	7	10	3	2	-	-
Nurturing Parent	29	51	2	2	-	-



Missing Children

Number of Missing Youth as of Reporting Date

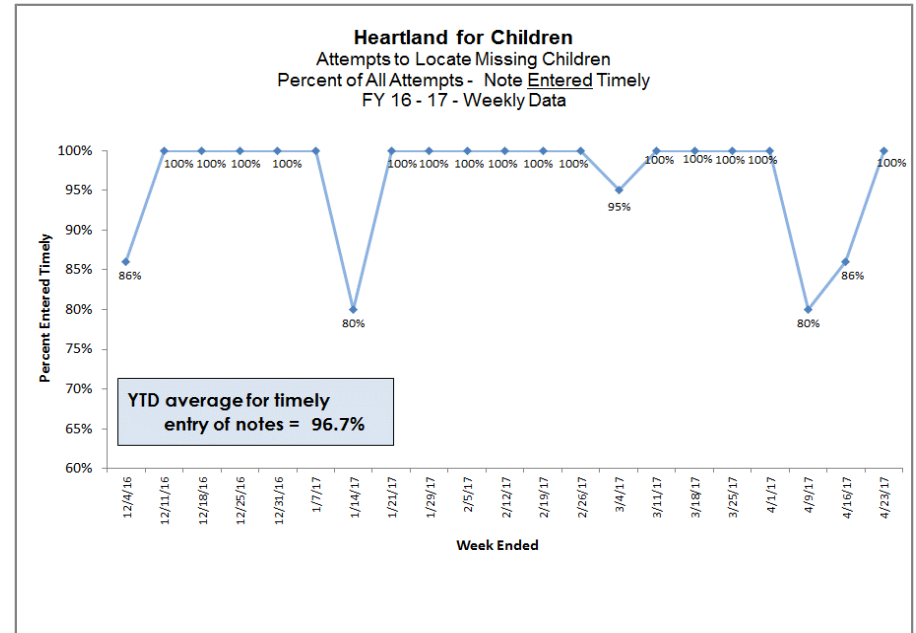
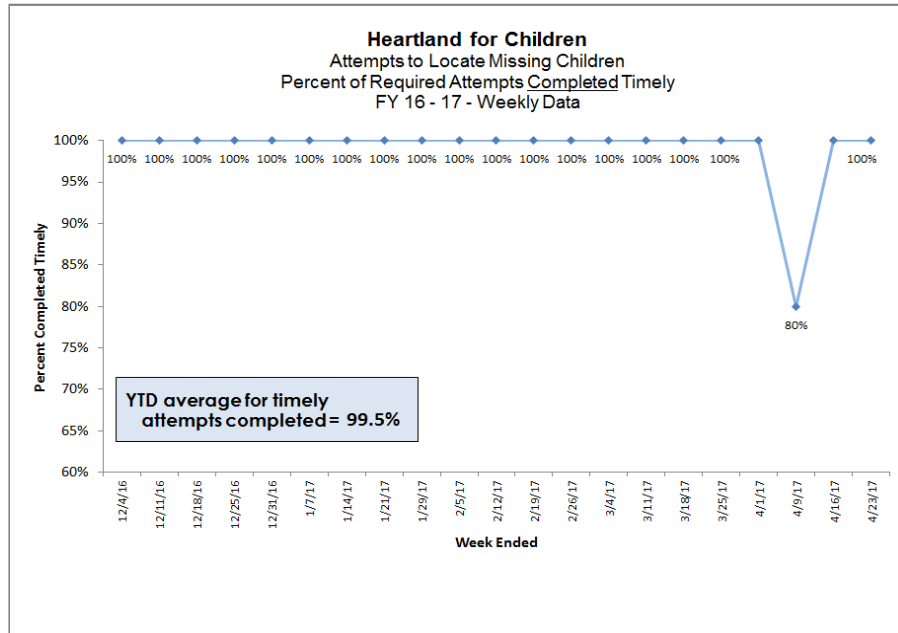


Circuit 10 - Weekly Missing Children Report												
Number of Missing Youth as of Reporting Date												
Reporting Date	Total	CHS	DEV	GCJFCS	OHU	CPI	Total New Episodes Month to Date	Total Recoveries Month to Date	Timely Reporting Compliance This Week	Timely Reporting Compliance Mnth to Date	Timely Reporting Compliance Misses	Agency Responsible for Missed MCR
M/End July 2016	3	1	1	1	0	0	19	21		95%	1	
M/End Aug 2016	4	1	1	1	0	1	15	13		100%	0	
M/End Sept 2016	7	3	2	2	0	0	17	16		94%	0	
M/End Oct 2016	6	2	2	2	0	0	19	19		89%	2	
M/End Nov 2016	7	3	1	3	0	0	21	23		100%	0	
M/End Dec 2016	5	3	2	0	0	0	19	22		100%	0	
M/End Jan 2017	3	1	1	1	0	0	25	25		100%	0	
M/End Feb 2017	5	1	2	1	1	0	23	19		87%	3	
M/End Mar 2017	5	2	3	0	0	0	23	31		96%	1	
4/2/2017	4	2	2	0	0	0	2	3	100%	100%	0	
4/9/2017	6	5	1	0	0	0	12	10	100%	100%	0	
4/16/2017	8	4	2	1	1	0	17	14	100%	100%	0	
4/23/2017	8	5	2	1	0	0	22	19	100%	100%	0	

Missing Children – Attempts to Locate

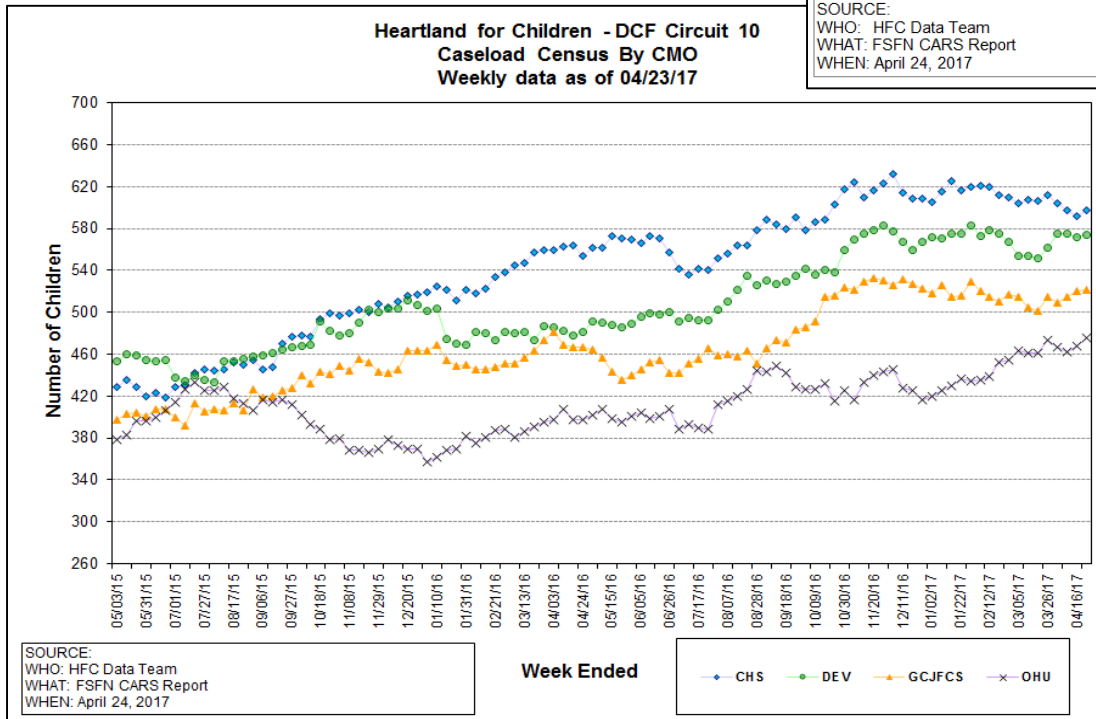
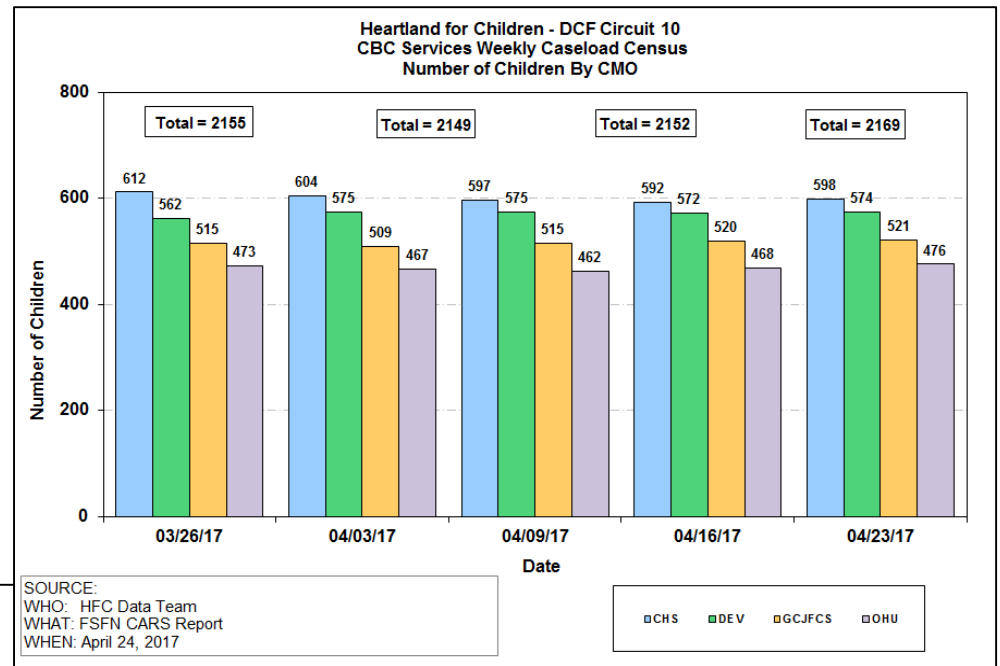
HFC – DCF Circuit 10 Attempts to Locate Missing Children

Attempts to Locate								
Week of 04/16/2017 through 04/22/2017								
Agency	Required	Required Completed	Required Completed Timely	Percentage Completed Timely	Notes Required	Voluntarily Completed	Notes Entered Timely	Attempt(s) to Locate note(s) entered within 24 hours
CHS	4	4	4	100%	4	0	4	100%
DEV	1	1	1	100%	1	1	2	100%
GCJFCS	1	1	1	100%	1	0	1	100%
OHU	0	0	0	-	0	0	0	-
PI	0	0	0	-	0	0	0	-
Total	6	6	6	100%	6	1	7	100%



Caseload Census Information

CBC Services Weekly Caseloads By CMO



Caseload Census Information

Case Manager Caseload Breakdown by Agency – Data as of 04/16/2017

Count of Case Managers With Caseload Range							
CMO	1-5 Children in Caseload	6-15 Children in Caseload	16-24 Children in Caseload	25+ Children in Caseload	30+ Children in Caseload	Total Case Managers	Avg # of Children per CM
CHS	0	4	7	4	8	23	25.7
DEV	2	8	8	4	6	28	20.4
GCJFCS	2	1	1	5	10	19	27.4
OHU	1	7	15	2	1	26	18.0
# of Case Managers	5	20	31	15	25	96	22.4

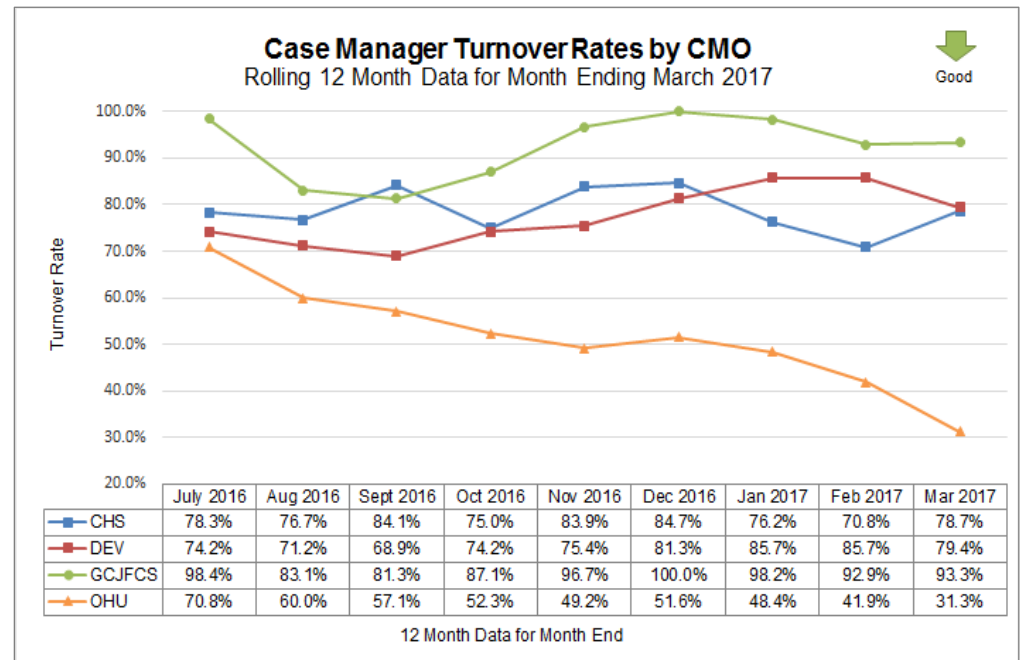
* Data Excludes Supervisor Count

Percent of Case Managers That Are at or Under the National Caseload Standard of 15			
Data as of 04/16/2017			
CMO	# Case Managers	# W/Caseload at 15 or lower	Percent at 15 or lower
CHS	23	4	17.4%
DEV	28	10	35.7%
GCJFCS	19	3	15.8%
OHU	26	8	30.8%
HFC	96	25	26.0%

Case Management Organization Turnover

12 Month Case Manager Turnover Rates by Agency

Employee Turnover Rates By CMO		
12 Month Data for Month Ended March 2017		
CMO	Case Manager	Case Manager Supervisor
CHS	78.7%	23.5%
DEV	79.4%	37.5%
GCJFCS	93.3%	12.5%
OHU	31.3%	20.0%



Monthly Birth Parent Contacts

Target = 70% Mothers and 50% Fathers - seen monthly

Birth Parent Contacts made in the month of April 2017 by CMO FSFN Data as of 04/24/17		
AGENCY	Mom % Completed	Dad % Completed
CHS	47.35%	27.85%
DEV	52.38%	31.48%
GCJFCS	56.49%	28.39%
OHU	32.00%	24.32%
HFC	49.93%	28.60%
Green = 70% or higher Mom / 50% or higher Dad Yellow = 63%-69% Mom / 45%-49% Dad Red = < 63% Mom / < 45% Dad <i>Source: Mindshare Mother / Father Contacts Dashboard</i>		

Birth Parent Contact Required and Completed March 2017							
AGENCY	# Moms Required	# Moms Completed	Mom % Completed	# Dads Required	# Dads Completed	Dad % Completed	Combined Average
CHS	262	187	71.4%	157	82	52.2%	61.8% ★
DEV	184	130	70.7%	104	55	52.9%	61.8% ★
GCCC	231	155	67.1%	144	65	45.1%	56.1%
OHU	74	55	74.3%	35	18	51.4%	62.9% ★
TOTAL	751	527	70.2%	440	220	50.0%	60.1%
<i>Source: FSFN Report - "Worker Contacts with Birth Parents Listing by Agency" Data-as-of: 04/09/17</i>							



Healthcare Information

Data Entered Into FSFN for Children in Out of Home Care

Heartland for Children, Inc. Health Information in FSFN for Children in OHC as of 04/23/17						
Agency	# of Children in OHC	% With a Medical Record in FSFN	% With Medical Service in last 12 Months	% With Dental Service in Last 7 months	% with Immunizations Up to Date	Overall Performance
CHS	406	99.3%	97.0%	92.8%	98.0%	95.9%
DEV	348	100.0%	98.6%	93.1%	98.6%	96.7%
GCJFCS	369	99.7%	97.0%	90.2%	98.9%	95.4%
OHU	135	100.0%	92.6%	85.4%	92.6%	90.2%
HFC	1258	99.7%	97.0%	91.2%	97.9%	95.4%

Source: FSFN report "Healthcare Service Information for Children in Out-of-home Care Daily Listing - OCWDRU"

Health Information in FSFN as of 04/23/17				
Agency	# of Missing Medical Records	# of Medical Appointments Needing Update	# of Dental Appointments Needing Update	# of Immunization Needing Update
CHS	3	12	18	8
DEV	0	5	13	5
GCJFCS	1	11	24	4
OHU	0	10	12	10
Total	4	38	67	27

Source: "Healthcare Service Information for OHC - Daily Listing - OCWDRU"

Health Information in FSFN for Children in OHC on 3/31/17						
Lead Agency	Children in OHC	Medical / Mental Health Record in FSFN	Medical Service in the Last 12 Months	Dental Service in the Last 7 Months	Immunizations up to date	Overall Measure
Big Bend CBC	845	100.0%	98.7%	96.8%	99.3%	98.3%
Families First Network	1373	99.7%	96.2%	90.6%	90.5%	92.4%
Community Partnership for Children	1140	99.6%	91.3%	78.6%	93.8%	87.9%
Family Integrity Program	192	99.5%	97.4%	91.0%	95.3%	94.6%
Family Support Services of North Fla	885	99.2%	96.9%	93.6%	95.9%	95.5%
Kids First of Florida, Inc.	277	100.0%	94.9%	91.0%	97.5%	94.4%
Partnership for Strong Families	895	100.0%	97.6%	94.1%	99.2%	97.0%
Brevard Family Partnership	728	99.7%	98.2%	97.2%	94.9%	96.8%
CBC of Central Florida	1260	100.0%	98.2%	97.7%	98.2%	98.0%
CBC of Central Florida (Seminole)	392	100.0%	95.7%	93.1%	98.2%	95.7%
Heartland for Children	1247	100.0%	98.2%	94.6%	98.4%	97.1%
Kids Central, Inc.	1540	99.9%	94.5%	89.8%	98.7%	94.4%
Childrens Network of SW Florida	1465	99.7%	86.3%	92.4%	94.7%	91.1%
Eckerd Community Alternatives	2013	99.9%	99.1%	96.1%	84.6%	93.3%
Eckerd Community Hillsborough	2336	99.9%	98.8%	97.3%	63.2%	86.4%
Sarasota Y/Safe Children Coalition	1060	99.9%	93.3%	62.1%	99.5%	85.0%
ChildNet-Broward	2246	100.0%	94.1%	91.8%	96.3%	94.0%
ChildNet-Palm Beach	1040	100.0%	97.1%	85.6%	100.0%	94.2%
Devereux CBC	582	99.8%	95.5%	92.8%	97.2%	95.2%
Our Kids of Miami-Dade/Monroe, Inc	1880	100.0%	97.6%	95.1%	97.2%	96.6%
Statewide	23396	99.9%	96.0%	91.7%	92.4%	93.4%
HFC Rank in Category			4th	7th	6th	3rd

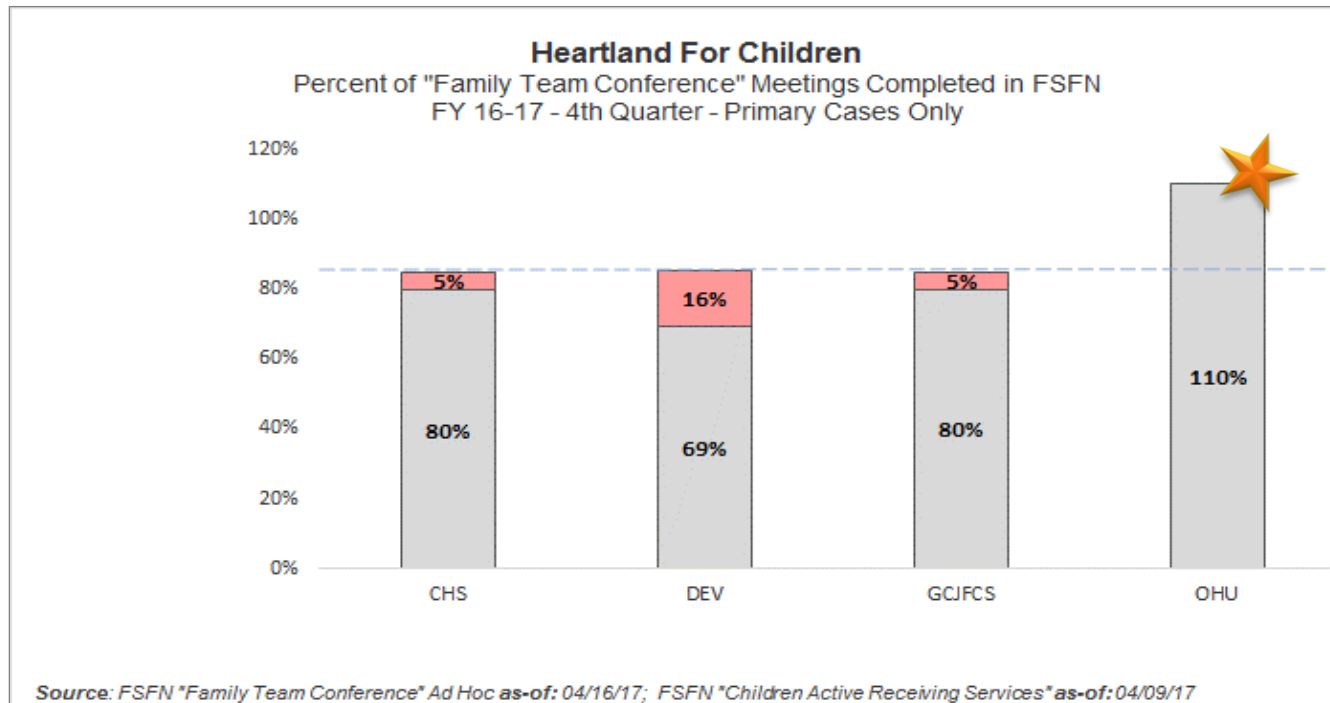


Contract Measure 12 - Family Team Conferences Completed

FY16-17 Contract Measure #12 – 4th Qtr Target: **85%**

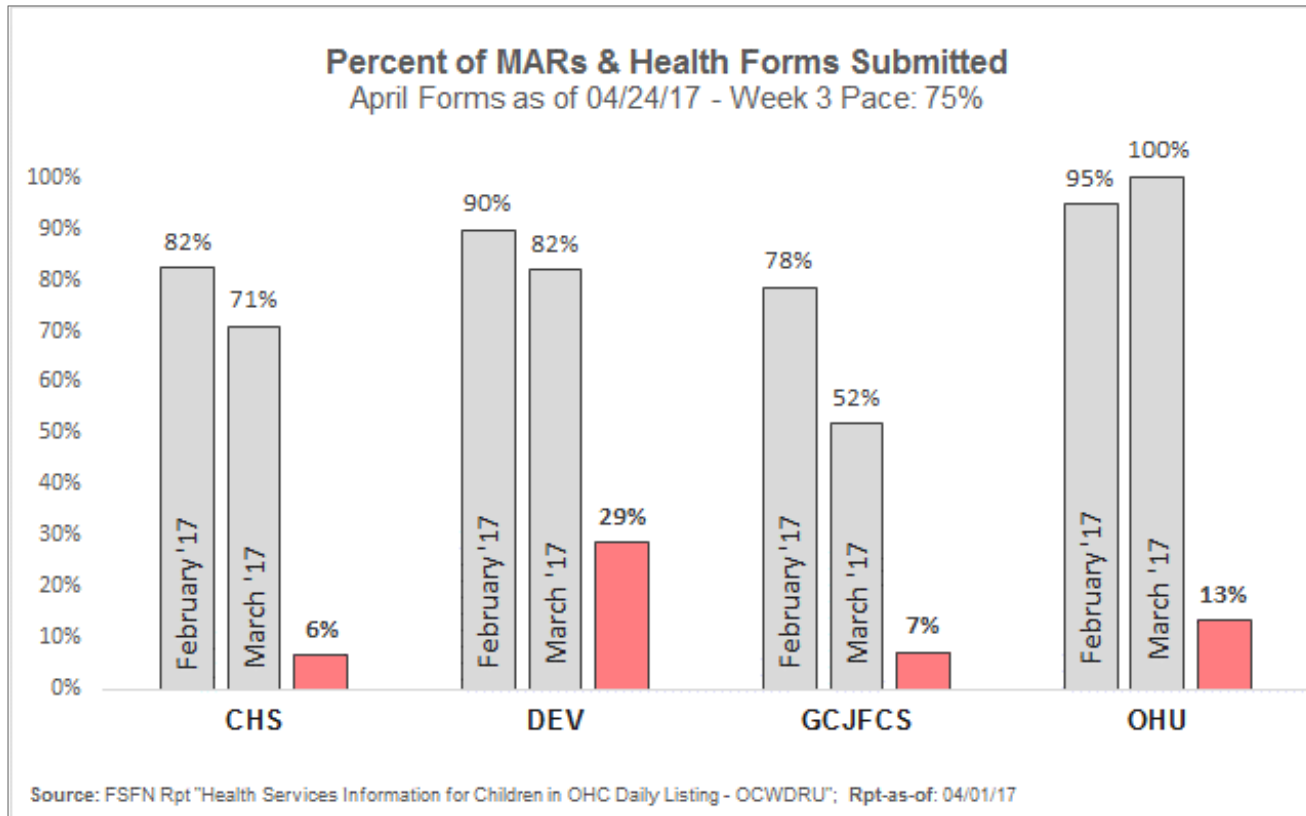
Percent of Family Team Conferences Completed									
Primary Cases with an FTC Meeting Completed as of 04/23/2017									
Agency	Percent Completed by Quarter Snapshot				FY FTCs by 4th Qtr Caseload				
	Qtr 1	Qtr 2	Qtr 3	Qtr 4	FTCs Completed	FTCs YTD 16-17	FTCs Remaining	4th Qtr Caseload	FYD Percentage
CHS	15%	11%	11%	1%	119	100	14	275	80%
DEV	5%	9%	6%	1%	132	53	43	267	69%
GCJFCS	13%	9%	12%	2%	117	78	12	244	80%
OHU	20%	11%	11%	4%	66	43	0	99	110%
Grand Total	53%	40%	41%	8%	434	274	69	885	88%

Source : FSN Ad Hoc - FTCs-as-of: 04/23/17; FSN CARS - Caseload 3rd Qtr-as-of: 04/09/17



Medication Administration Records and Health Management Forms – April 2017

Percent of Current MARs and Health Forms Submitted Correctly for Reporting Month



Green = Meeting Month Pace, Yellow = 10% Below Month Pace, Red = More Than 10% Below Month Pace



Data Exceptions: Placements

Placement Exceptions by Number of Weeks on List				
Data as of 04/23/2017				
Agency	Greater than 2 weeks	1 - 2 weeks	Less than 1 week	Grand Total
CHS		2	6	8
DEV		3	2	5
GCJFCS			13	13
OHU		6	1	7
CPI			13	13
Grand Total	0	11	35	46

Placement Exceptions Totaled By Agency						
Last 6 Reporting Periods						
Agency	3/19/2017	3/26/2017	4/3/2017	4/9/2017	4/16/2017	4/23/2017
CHS	6	5	9	16	14	8
DEV	8	9	13	13	12	5
GCJFCS	27	9	15	6	5	13
OHU	1	5	9	9	14	7
CPI	18	13	15	16	7	13
NTF	5	4		15	3	
SCARF				3		
District Total	65	45	61	78	55	55

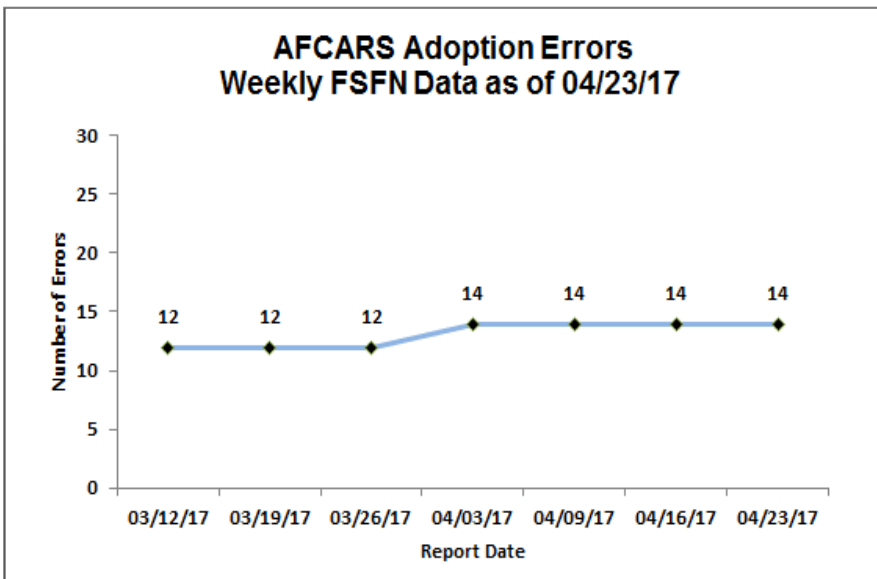
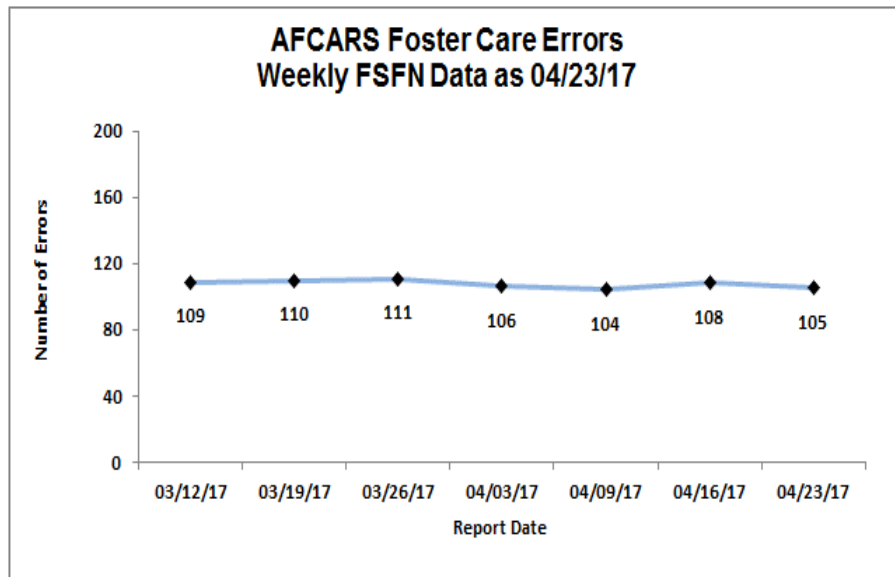


Data Exceptions: AFCARS

Data for Reporting Period - 10/01/16 – 03/31/17

AFCARS Foster Care Report						
Agency	Child Info	Provider	Legal	Mother Married	Cannot Be Corrected	Total
CHS			2		24	26
DEV					27	27
GCJFCS			3		32	35
OHU					9	9
CPI				8		8
Total	0	0	5	8	92	105

Source : FSFN AFCARS Foster Error Report & OCWRDU Rpt as of: 04/23/17



AFCARS Adoption Errors						
Agency	Adoption	Child Info	Provider	Legal	Cannot Be Corrected	Total
CHS					0	0
DEV					0	0
GCJFCS					2	2
OHU					0	0
HFC					12	12
Total	0	0	0	0	14	14

Source : FSFN AFCARS Foster Error Report & OCWRDU Rpt as of: 04/23/17



Family Functioning Assessment – Methodology Cases

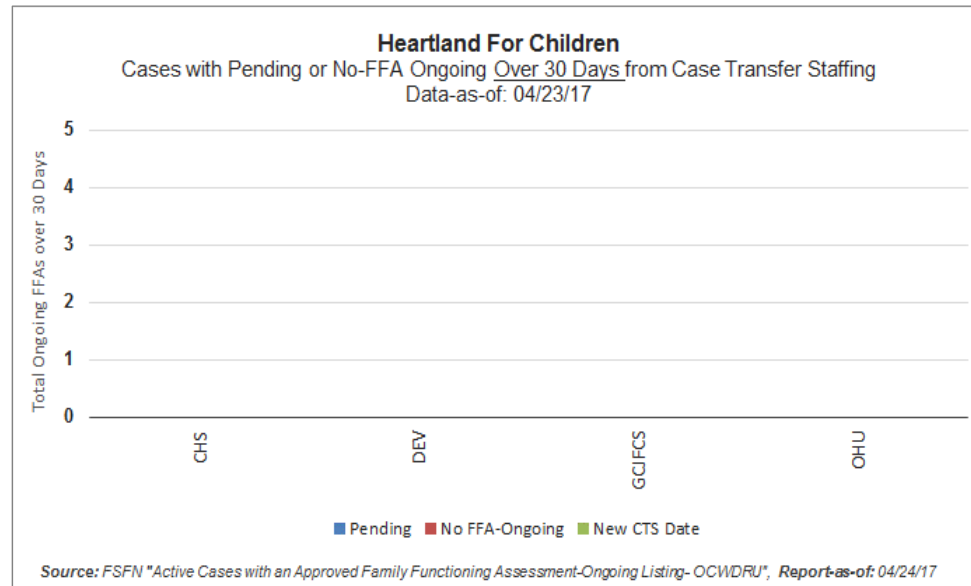
Timeliness of FFA “Approval” on Methodology Cases

Active Methodology Cases by FFA-Ongoing Status Data as of 04/23/17				
Agency	No FFA	Pending	Approved	Total
CHS	5	6	284	295
DEV	3	12	269	284
GCJFCS	8	0	244	252
OHU	2	4	105	111
Total	18	22	902	942

CMO Contract Measure 11 – 4th Quarter

Percentage of Family Functioning Assessments Approved within 30 days of Case Transfer Staffing 4th Quarter-to-Date as of 04/23/17			
Agency	Timely (< 30 Days)	FFA Approvals (4th Qtr)	Completed Timely
CHS	8	8	100.0% ★
DEV	13	13	100.0% ★
GCJFCS	12	14	85.7%
OHU	6	6	100.0% ★
HFC TOTAL	39	41	95.1%

FY 16-17 Target = **95% and above.**



KNOWLEDGE

Improving Productivity

Productivity is all about efficiency -- doing more, faster and with less. And with increasing demands from today's anytime, anywhere workplace, it is has never been more important.

ACTION

Here are some tips for improving productivity
- for everyone

1. Start the day with structured 'me time': Go through email & social media updates that have piled up overnight & triage the backlog. Knock out quick responses & referrals, so other people can start working on tasks. Schedule the bigger tasks. Delete stuff that is informational or not important.
2. Reduce all meeting times by 25 percent: You will get the same amount of work done, because so much time is wasted dealing with conference call setup & useless banter. If you cut one five-person meeting per day from one hour down to 45 minutes, you will gain back 25 hours a month of work time. That's roughly 300 hours a year -- almost two months of work! You HAVE to watch this very funny video: https://www.youtube.com/watch?v=DYu_bGbZiiQ You can also Google "Tripp and Tyler conference call" to see it.
3. Schedule regular breaks during the day: Running from back-to-back meetings is not productive, because you get tired and lose focus. Block off time in your calendar and take breaks. Making these breaks a routine increases predictability, creating a regular schedule to keep your mind organized.

KNOWLEDGE TO

ACTION

4. Don't multi-task: Many professionals agree that blocking your time is far more effective than multi-tasking. Studies show that multi-tasking can negatively affect your brain in terms of memory and focus. Work on one task, finish that task and then move onto the next one.
5. Chop up big problems into smaller chunks: This will reduce the feeling of overload and the procrastination associated with taking on big jobs.
6. Use checklists for repetitive tasks to reduce errors: Particularly when you are overworked or are operating under time constraints, checklists keep you on track.
7. Don't procrastinate: Procrastination will do nothing other than increase your stress levels and workload later. Do bothersome things first to get them out of the way.
8. Realize you're not the same as your co-worker: The more you try and understand what works best for you, the happier and more productive you'll be. Don't beat yourself up by comparing how you organize your day at work compared to how others organize themselves.

Taken in part from the Huffington Post

We all have parts. Right now a part of me feels like taking a nap; another part wants to keep writing. Still feeling injured by an offensive email message, a part of me wants to hit “reply” on a stinging put-down, while a different part of me wants to shrug it off.....How well we get along with ourselves depends largely on our internal leadership skills – how well we listen to our different parts, make sure they feel taken care of, and keep them from sabotaging one another.

The Body Keeps the Score by Bessel Van Der Kolk, MD

RESOURCE NEWS FLASH... April 26, 2017

Prevention/Community Resources

Latino and Immigrant/Refugee Resources – The online version of the 2016/2017 Prevention Resource Guide offers additional resources for professionals working with families in the Latino community – go to www.childwelfare.gov/topics/preventing/preventiononth/resources/resource-guide. Additional publications that address child abuse and neglect prevention, adoption, out-of-home care, mental health, and more are available on the "Resources in Spanish" section of the Child Welfare Information Gateway website - www.childwelfare.gov.

Teen/Young Adult Resources

2017 Teen Summit – "They Don't Know I'm A Boss... #Bossup," sponsored by Healthy Start Coalition and the Teen Pregnancy Prevention Alliance, is a free event for all youth ages 10-19 on May 20th from 9:30am-2:30pm at the Polk State College Performing Arts Building (999 Avenue H NE, Winter Haven). Music, Drama skits, Food, Giveaways, and more! A registration form must be completed by a parent/guardian for all youth that attend. To register, go to www.healthystarthhp.org/events. Space is Limited!

Summer Camp Resources

Summer Fun at the Rec 2017 – The Winter Haven Recreational and Cultural Center (801 Ave T NE) is holding a camp for Kindergarten graduates to 13 years old (city residents only) from June 12th – August 4th. Discounts and scholarships are available. For more info, call 863-291-6666.

Discovery Camp 2017 – The City of Winter Haven is holding a camp at the Chain O' Lakes Complex (210 Cypress Gardens Blvd.) for Kindergarten graduates to 5th Grade from June 12th – August 4th. Discounts and scholarships are available for City residents. For more info, call Parks & Recreation at 863-291-6666.

City of Lake Alfred Camp - Camp will be held June 12th – July 28th for children ages 5-12 at the Lake Alfred Lions Club (500 N Nekoma Ave.) from 7:30am-5:30pm. For more info, call 863-291-5272 or visit the city website at www.mylakealfred.com. The cost is \$450 for the 7 week program – includes field trips, T-shirt, and afternoon snacks. Activities include bowling, skating, movies, fishing, swimming, etc.

2017 Summer Theatre Camp - Theatre Winter Haven camp for children ages 7-16. Camp will be held from June 5th-June 25th. For more info call Molly Judy at 863-299-2672 or email TWHAcademy@aol.com.

Camp BLAST - The camp, run by the City of Lakeland Parks and Recreation Department, will be held at various city recreation facilities and schools from June 12th – July 28th for children completing kindergarten through 5th grades. For more info, call 863-834-3284.

Bartow Bash Summer Camp - The camp, run by the City of Bartow Parks and Recreation Department, will be held from June 12th – July 28th for children completing kindergarten through age 12 at the Carver Recreation Center from 7:30am-5:30pm. For more info, call 863-534-0120. The cost is \$75/week for city residents.

Camp ROCK 2017 - The Summer Recreation Program is available in three two-week sessions from June 19th – July 28th. Throughout late April and early May, parents are able to register their children (those entering 1st grade through those entering 8th grade in 2017) in any or all sessions on a space available basis. The cost (includes registration fee, t-shirt, and field trips) per two-week session is \$115. Financial assistance is available to qualified families. For more info including registration dates, times and locations, call 863-534-6911 or visit www.parksandrec.polk-county.net.

Community Event

Mind, Body, Health – This Day of Empowerment for the Entire Family, hosted by the Polk County Chapter of National Coalition of 100 Black Women, will be held on April 29th from 8:00am-12:00pm at Polk State College (999 Avenue H NE, Winter Haven). Come see the exhibits, panels, health screening, and more including free breakfast and lunch! For more info call 863-324-3500.

Health Resources

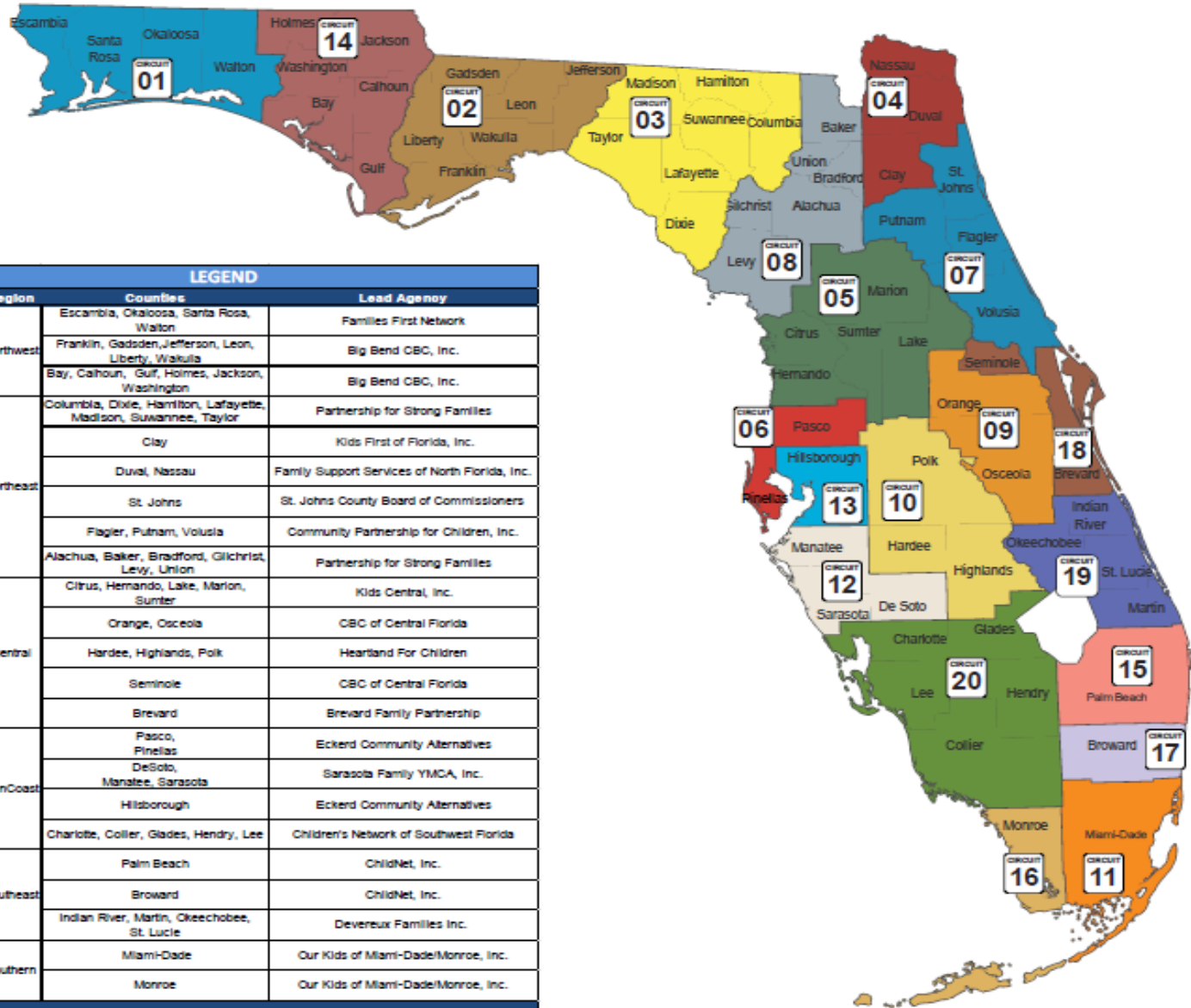
National Medication Take Back Day – Bring unwanted or expired Human and/or Pet Medications (in a clear air-tight sealed plastic bag) to any of the designated Polk County locations for safe disposal on April 29th from 10:00am-2:00pm. For more info and locations, call StandUp Polk Coalition at 863-802-0777.

Infant, Toddler, Preschool Developmental Screenings – The Florida Diagnostic and Learning Resources System (FDLRS) will be conducting screenings for children birth to five on May 19th from 8:30am-12:00pm at First Baptist Church Winter Haven (198 W. Central Ave.). Areas screened | include vision, hearing, speech, language, behavior, and overall development. Appointments will be scheduled as calls are received. Call 863-647-4258.



Community Based Care: Hardee, Highlands & Polk Counties

Community Based Care Lead Agency Map



LEGEND			
Circuit	Region	Counties	Lead Agency
1		Escambia, Okaloosa, Santa Rosa, Walton	Families First Network
2	Northwest	Franklin, Gadsden, Jefferson, Leon, Liberty, Wakulla	Big Bend CBC, Inc.
14		Bay, Calhoun, Gulf, Holmes, Jackson, Washington	Big Bend CBC, Inc.
3		Columbia, Dixie, Hamilton, Lafayette, Madison, Suwannee, Taylor	Partnership for Strong Families
4		Clay	Kids First of Florida, Inc.
4	Northwest	Duval, Nassau	Family Support Services of North Florida, Inc.
7	Northwest	St. Johns	St. Johns County Board of Commissioners
7	Northwest	Flagler, Putnam, Volusia	Community Partnership for Children, Inc.
8		Alachua, Baker, Bradford, Gilchrist, Levy, Union	Partnership for Strong Families
5		Citrus, Hernando, Lake, Marion, Sumter	Kids Central, Inc.
9		Orange, Osceola	CBC of Central Florida
10	Central	Hardee, Highlands, Polk	Hearthland For Children
18		Seminole	CBC of Central Florida
18		Brevard	Brevard Family Partnership
6		Pasco, Pinellas	Eckerd Community Alternatives
12		DeSoto, Manatee, Sarasota	Sarasota Family YMCA, Inc.
13	SunCoast	Hillsborough	Eckerd Community Alternatives
20		Charlotte, Collier, Glades, Hendry, Lee	Children's Network of Southwest Florida
15		Palm Beach	ChildNet, Inc.
17	Southeast	Broward	ChildNet, Inc.
19		Indian River, Martin, Okeechobee, St. Lucie	Devereux Families Inc.
11	Southern	Miami-Dade	Our Kids of Miami-Dade/Monroe, Inc.
16		Monroe	Our Kids of Miami-Dade/Monroe, Inc.